

Need a Mortgage in principle to make offers? Call us now for quick assistance!
01564 777 314



The Brambles, Banbuy Road, Gaydon, CV35

Purchase Price £875,000



SCAN FOR MORE INFO
SIZE - 2443 Sq Ft
TENURE - Freehold
COUNCIL TAX - Stratford Upon Avon District Council - Rate to be assessed.
INTERNET - To Be Confirmed
EPC - TBC
Flood Risk: No Risk
Covenants: N/A

One of two brand-new, five-bedroom detached homes set on approximately 0.25 acres of gardens, with views over the open countryside. Featuring a spacious entrance hall, open-plan kitchen/living/dining area, separate lounge with a log burner and a useful utility.

FEATURES

- Five Bedroom Detached House
- New Build
- Bespoke Oak Staircase
- Open-Plan Kitchen/Dining/Living Room
- Separate Lounge
- Bi-Fold Doors to Rear Garden
- Two En-Suites & Family Bathroom
- Family Bathroom
- Integral Garage
- Open Views to Rear
- No Upward Chain

Do you need to sell? Call us we can help.

Start your journey now!
Call 01564 777 314



SCAN TO VIEW OUR WEEKLY FILMS & SUBSCRIBE

Sneak Peeks

Every week, we unveil "Sneak Peeks," a feature showcasing exclusive properties before they hit Rightmove and other platforms.

The Landlord Club

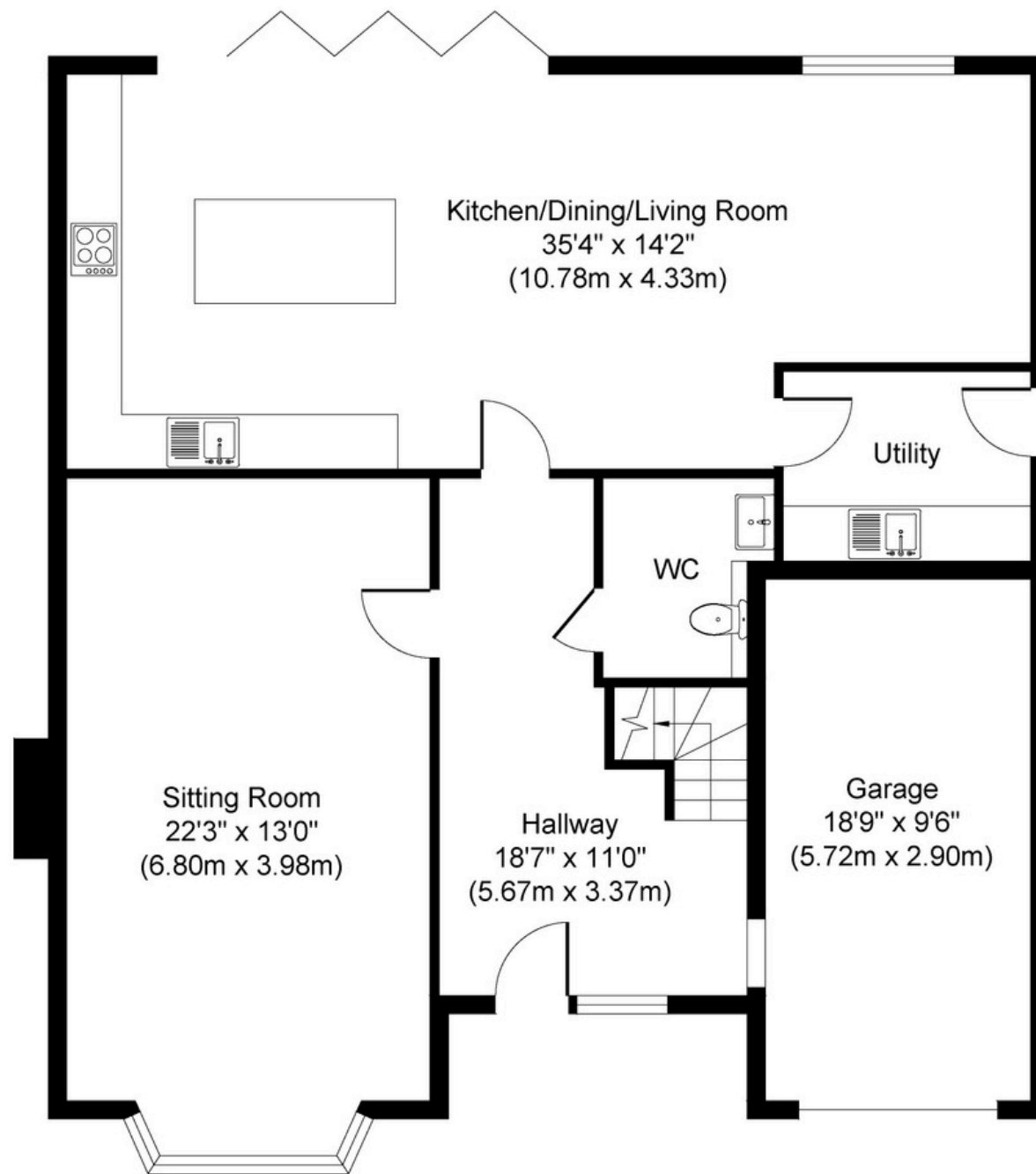
Join our Landlord Club for weekly updates on legislation, market trends, and our Letting Director's 'Investment Pick of the Week' for optimal ROI.

HTSPMD

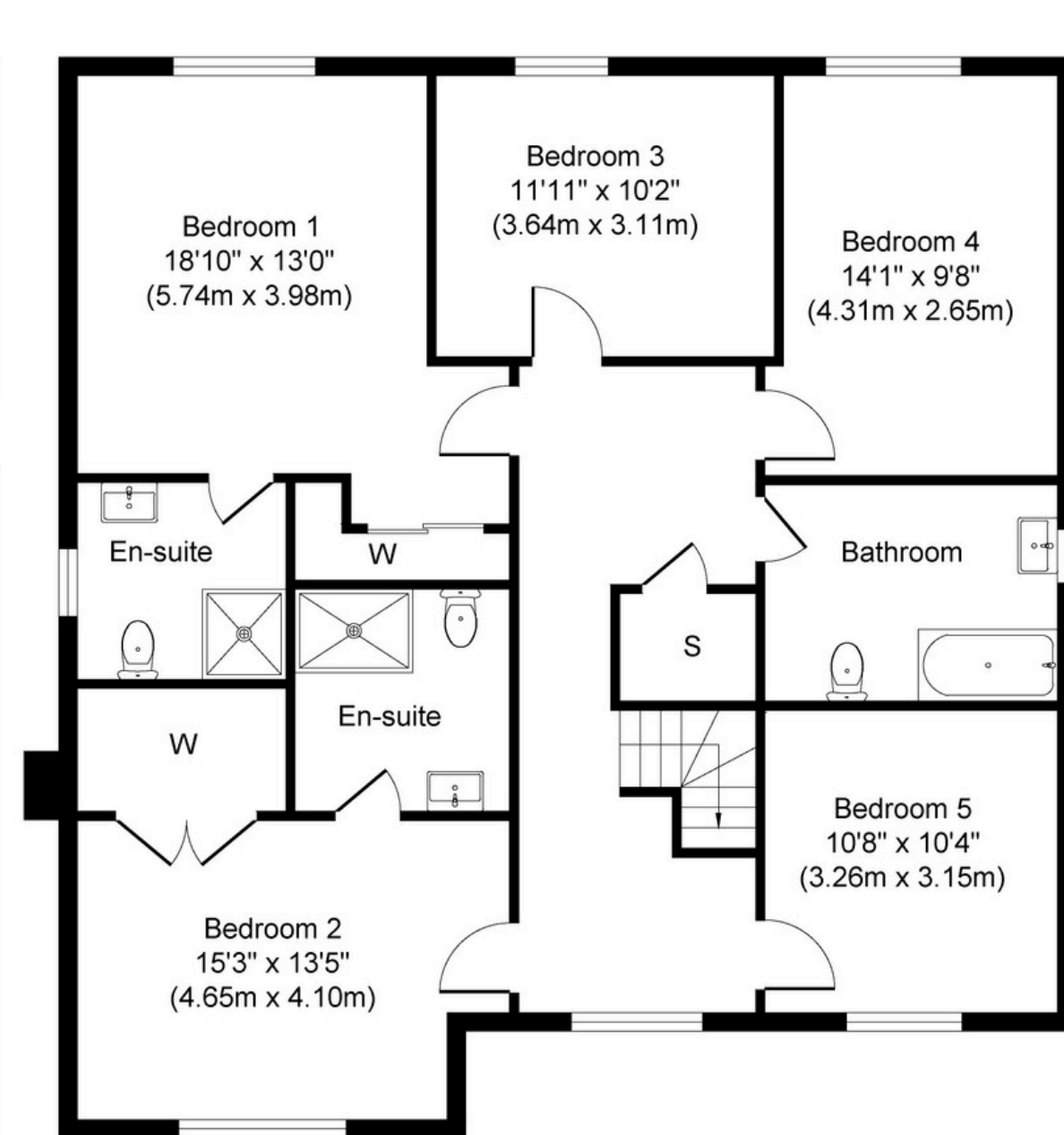
Tune into 'How's The Solihull Property Market Dom' weekly for a quick, insightful snapshot of the market.

The Mortgage Update

Get weekly insights and the best deals with our Mortgage Update, your shortcut to navigating the complex mortgage landscape confidently.



Ground Floor
Approximate Floor Area
1247 sq. ft
(115.82 sq. m)



First Floor
Approximate Floor Area
1196 sq. ft
(111.15 sq. m)



Whilst every attempt has been made to ensure the accuracy of the floor plan contained here, measurements of doors, windows, rooms and any other items are approximate and no responsibility is taken for any error, omission, or mis-statement. The measurements should not be relied upon for valuation, transaction and/or funding purposes. This plan is for illustrative purposes only and should be used as such by any prospective purchaser or tenant. The services, systems and appliances shown have not been tested and no guarantee as to their operability or efficiency can be given.