



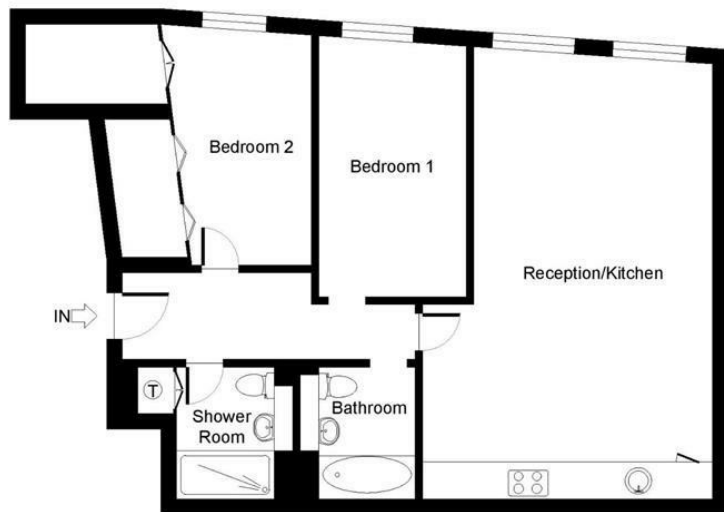
arthur grace
RESIDENTIAL



Dovecot Road, High Wycombe, HP13 5HH
Guide Price £250,000



Floor Plan



SECOND FLOOR

RECEPTION/KITCHEN
7.4m x 4.8m / 24'3" x 15'7"

BEDROOM 1
4.3m x 2.4m / 14'0" x 7'11"

BEDROOM 2
3.9m x 2.0m / 12'9" x 6'5"

SHOWER ROOM
2.2m x 1.9m / 7'1" x 6'3"

BATHROOM
2.2m x 1.9m / 7'1" x 6'2"

Disclaimer: Regents House, 73 m sq / 790 ft sq (including eaves storage). Whilst every attempt has been made to ensure the accuracy of the floor plan contained here, measurements of doors, windows, rooms and any other item are approximate and no responsibility is taken for any error, omission, or misstatement.

arthurgrace
RESIDENTIAL

Accommodation

- Town Centre Location!
- 2 double bedroom apartment
- 2 bathrooms
- Open Plan Lounge & Kitchen
- Situated on the second floor
- Street Parking (local permit available)
- 790 ft sq
- Council Tax. Band B
- EPC C



These particulars, whilst believed to be accurate are set out as a general outline only for guidance and do not constitute any part of an offer or contract. Intending purchasers should not rely on them as statements of representation of fact, but must satisfy themselves by inspection or otherwise as to their accuracy. No person in this firm's employment has the authority to make or give any representation or warranty in respect of the property.

The Nook Grove Lane Chalfont St Peter, Buckinghamshire, SL9 9JU

Tel: 01753 628700 Email: enquiries@arthurgraceresidential.com <https://www.arthurgraceresidential.com>