



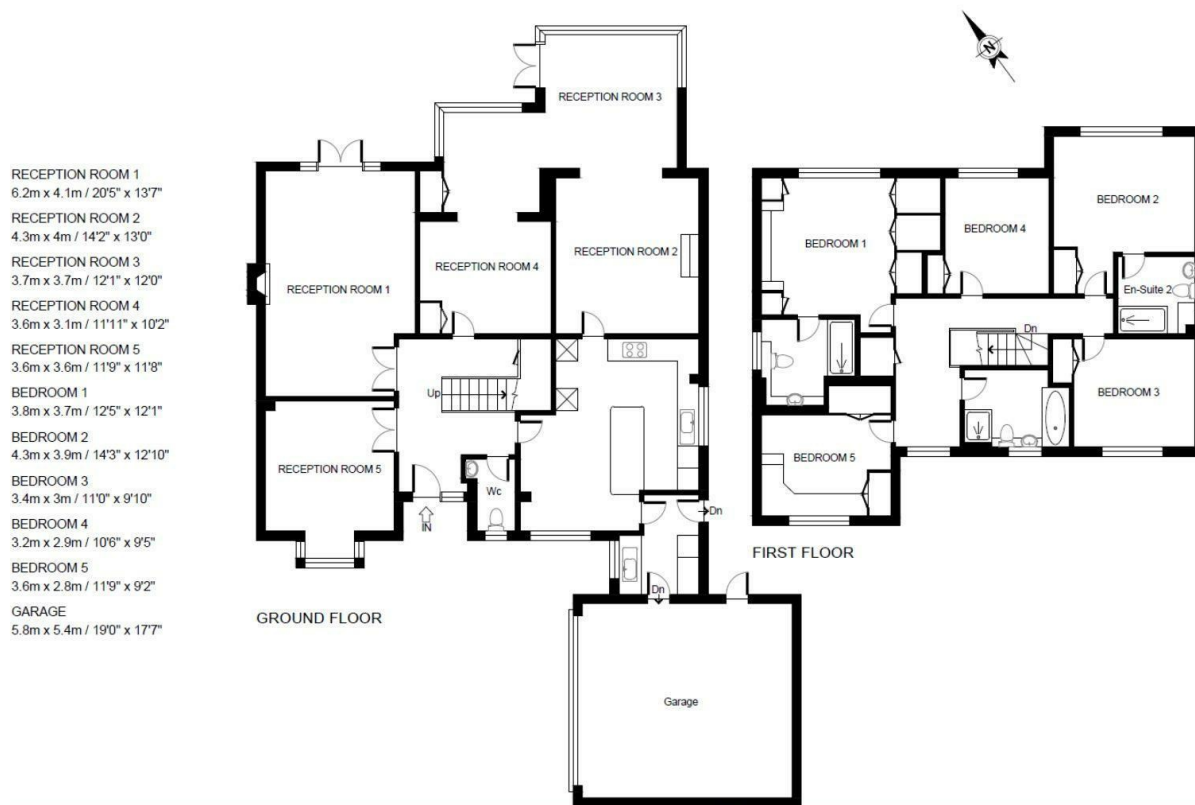
arthur grace
RESIDENTIAL



Ridgemount End, Gerrards Cross, SL9 0SA
Guide Price £1,350,000



Floor Plan



*Disclaimer. Ridgemount Way.
271 m sq / 2920 ft sq
(including garage).
Whilst every attempt has been
made to ensure the accuracy
of the floor plan contained
here, measurements of doors,
windows, rooms and any other
item are approximate and no
responsibility is taken for any
error, omission, or
misstatement.*

**arthur
grace**
RESIDENTIAL

Accommodation

- Modern detached home
- 5 bedrooms (all double bedrooms with wardrobes)
- 5 reception rooms + eat in kitchen
- 3.5 bathrooms
- Double garage & off street parking
- Potential to extend STPP (lapsed planning to extend over the garage)
- Catchment for sought after schooling (primary & secondary)
- 2920 sq ft
- Council Tax Band. G
- EPC. C

These particulars, whilst believed to be accurate are set out as a general outline only for guidance and do not constitute any part of an offer or contract. Intending purchasers should not rely on them as statements of representation of fact, but must satisfy themselves by inspection or otherwise as to their accuracy. No person in this firm's employment has the authority to make or give any representation or warranty in respect of the property.

The Nook Grove Lane Chalfont St Peter, Buckinghamshire, SL9 9JU
Tel: 01753 628700 Email: enquiries@arthurgraceresidential.com <https://www.arthurgraceresidential.com>