

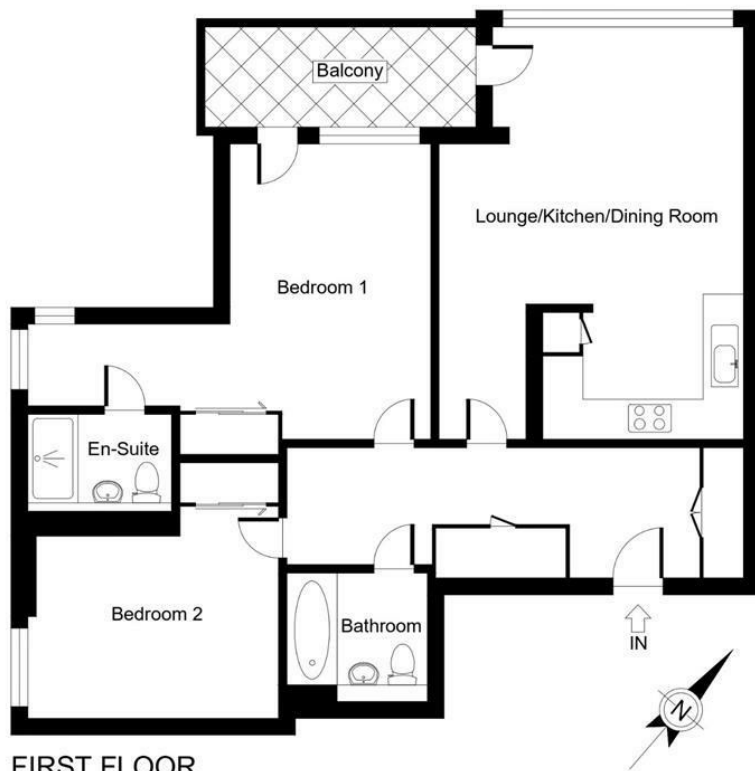


arthur grace
RESIDENTIAL

Station Road, Gerrards Cross, SL9 8ER
Guide Price £585,000



Floor Plan



Disclaimer: Marsham House. 82 m sq / 888 ft sq. Whilst every attempt has been made to ensure the accuracy of the floor plan contained here, measurements of doors, windows, rooms and any other item are approximate and no responsibility is taken for any error, omission, or misstatement.

arthur grace
RESIDENTIAL

Accommodation

- Luxury first floor apartment in central Gerrards Cross
- 2 double bedrooms (with fitted wardrobes in both bedrooms)
- 2 bathroom (inc ensuite to master bedroom)
- Open plan kitchen to lounge with balcony
- Allocated parking
- Lift access to all floors
- 888 sq ft / 82 m²
- In the heart of Gerrards Cross (minutes from the Station & High Street)
- Council Tax Band. F
- EPC. C



These particulars, whilst believed to be accurate are set out as a general outline only for guidance and do not constitute any part of an offer or contract. Intending purchasers should not rely on them as statements of representation of fact, but must satisfy themselves by inspection or otherwise as to their accuracy. No person in this firm's employment has the authority to make or give any representation or warranty in respect of the property.

The Nook Grove Lane Chalfont St Peter, Buckinghamshire, SL9 9JU
Tel: 01753 628700 Email: enquiries@arthurgraceresidential.com <https://www.arthurgraceresidential.com>