



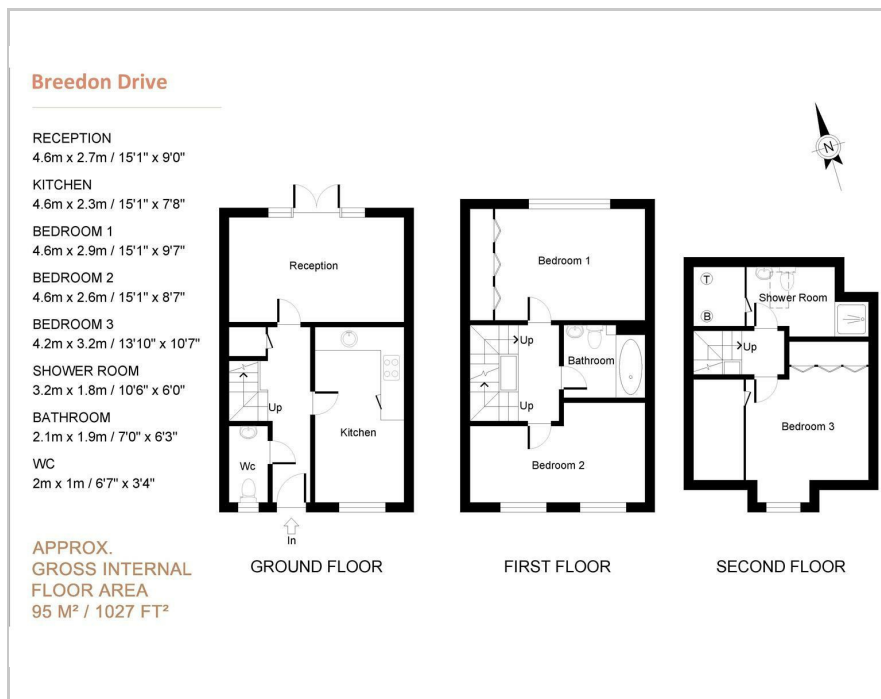
arthur grace
RESIDENTIAL



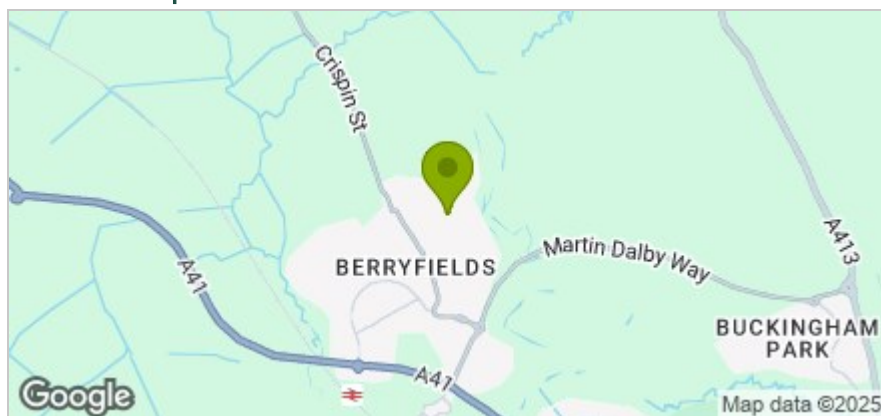
Breedon Drive, Aylesbury, HP18 OFY
£1,800 Per Month



Floor Plan



Area Map



Accommodation

- Modern 3 bedroom 2 bathroom semi detached
- ** Entirely redecorated & re-carpetted **
- Separate Lounge & Eat in Kitchen
- Off street parking for 2 cars (no further parking restrictions)
- 1027 sq ft
- Set within the popular Berryfields, Aylesbury location
- Unfurnished (kitchen appliances included)
- Available from 2nd August 2025
- Council Tax. Band D - £2374.00
- EPC B



These particulars, whilst believed to be accurate are set out as a general outline only for guidance and do not constitute any part of an offer or contract. Intending purchasers should not rely on them as statements of representation of fact, but must satisfy themselves by inspection or otherwise as to their accuracy. No person in this firm's employment has the authority to make or give any representation or warranty in respect of the property.

The Nook Grove Lane Chalfont St Peter, Buckinghamshire, SL9 9JU
Tel: 01753 628700 Email: enquiries@arthurgraceresidential.com <https://www.arthurgraceresidential.com>