



arthur grace
RESIDENTIAL



Bellfield Road, High Wycombe, HP13 5HW
£1,250 Per Month



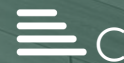
1



1

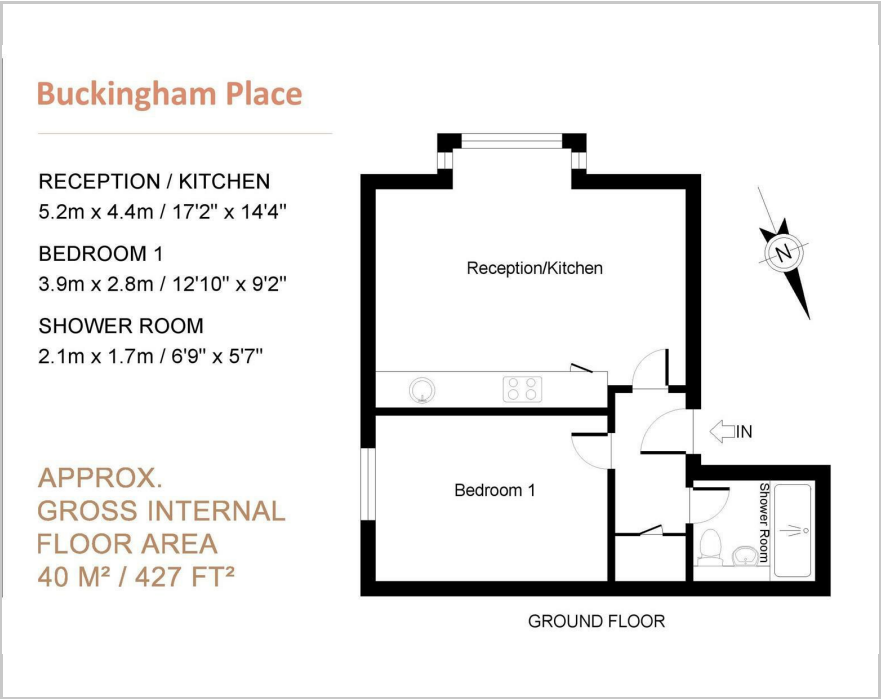


1



C

Floor Plan



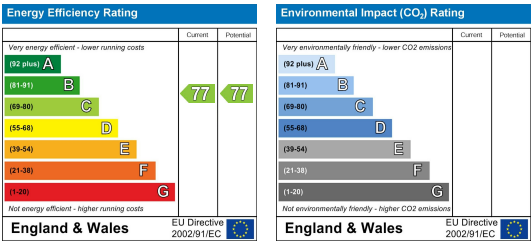
Accommodation

- Central High Wycombe with parking
- 1 bedroom luxury apartment (ground floor)
- Open plan modern kitchen to lounge
- Sleek hardfloors & luxurious carpets
- Spacious bedrooms with fitted wardrobes
- Allocated parking for 1 car + visitors parking
- Available from 8th August 2025
- Unfurnished (appliances and fitted wardrobe included)
- Council Tax, Band B
- EPC C

Viewing

Please contact our Arthur Grace Residential Office on 01753 628700 if you wish to arrange a viewing appointment for this property or require further information.

Energy Efficiency Graph



Area Map



These particulars, whilst believed to be accurate are set out as a general outline only for guidance and do not constitute any part of an offer or contract. Intending purchasers should not rely on them as statements of representation of fact, but must satisfy themselves by inspection or otherwise as to their accuracy. No person in this firms employment has the authority to make or give any representation or warranty in respect of the property.