



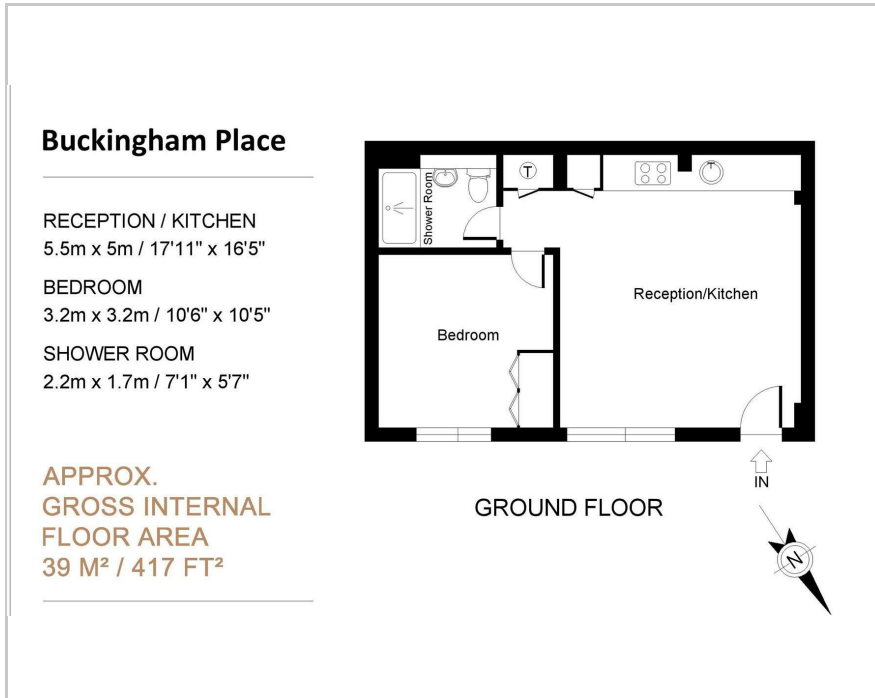
arthur grace  
RESIDENTIAL



Bellfield Road, High Wycombe, HP13 5HW  
£1,200 Per Month



## Floor Plan



## Area Map



## Accommodation

- 1 bedroom ground floor apartment
- City centre location
- Open plan modern kitchen to lounge
- Spacious bedroom with fitted wardrobes
- Allocated parking for 1 car
- Council Tax, Band B
- 420 sq ft
- Unfurnished (fitted wardrobe in the bedroom & appliances to the kitchen)
- Available from now.
- EPC C



These particulars, whilst believed to be accurate are set out as a general outline only for guidance and do not constitute any part of an offer or contract. Intending purchasers should not rely on them as statements of representation of fact, but must satisfy themselves by inspection or otherwise as to their accuracy. No person in this firm's employment has the authority to make or give any representation or warranty in respect of the property.