



arthur grace  
RESIDENTIAL

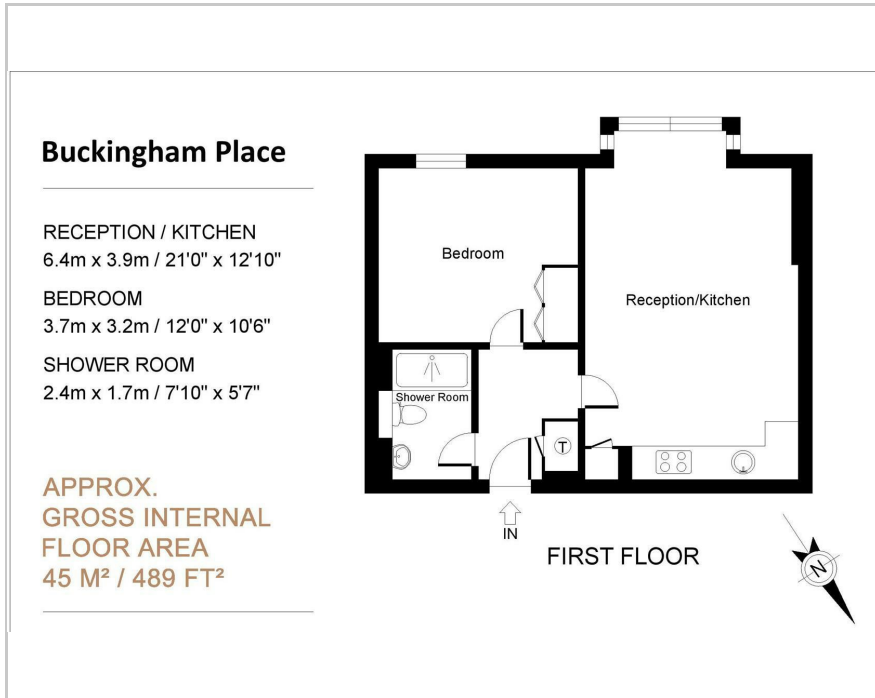


Belfield Road, High Wycombe, HP13 5HW  
£1,350 Per Month





## Floor Plan



## Area Map



## Accommodation

- 1 bedroom apartment with allocated parking
- Only renovated 9 months ago, so in beautiful condition!
- First floor apartment with south facing aspect
- Open plan modern kitchen to lounge
- Sleek hardfloor & luxurious carpet
- Spacious bedroom with fitted wardrobe
- Available now (apartment is empty)
- Unfurnished (appliances and fitted wardrobe included)
- Council Tax, Band B
- EPC C



These particulars, whilst believed to be accurate are set out as a general outline only for guidance and do not constitute any part of an offer or contract. Intending purchasers should not rely on them as statements of representation of fact, but must satisfy themselves by inspection or otherwise as to their accuracy. No person in this firm's employment has the authority to make or give any representation or warranty in respect of the property.

The Nook Grove Lane Chalfont St Peter, Buckinghamshire, SL9 9JU  
Tel: 01753 628700 Email: [enquiries@arthurgraceresidential.com](mailto:enquiries@arthurgraceresidential.com) <https://www.arthurgraceresidential.com>