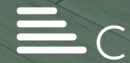




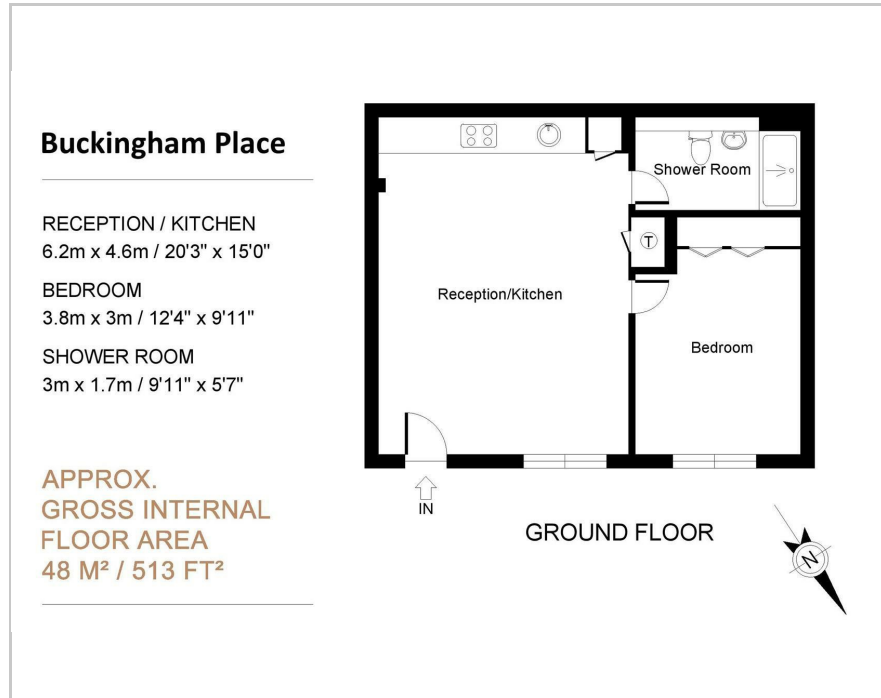
arthur grace
RESIDENTIAL



Bellfield Road, High Wycombe, HP13 5HW
£1,300 Per Month



Floor Plan



Area Map



Accommodation

- 1 bedroom ground floor apartment
- **** BRAND NEW **** Be the first to live in these stunning apartment
- Open plan modern kitchen to lounge
- Sleek hardfloors & luxurious carpets
- Spacious bedroom with fitted wardrobes
- Council Tax, Band B
- EPC C
- Unfurnished (fitted wardrobe in the bedroom & appliances to the kitchen)
- Available from now



These particulars, whilst believed to be accurate are set out as a general outline only for guidance and do not constitute any part of an offer or contract. Intending purchasers should not rely on them as statements of representation of fact, but must satisfy themselves by inspection or otherwise as to their accuracy. No person in this firm's employment has the authority to make or give any representation or warranty in respect of the property.

The Nook Grove Lane Chalfont St Peter, Buckinghamshire, SL9 9JU
Tel: 01753 628700 Email: enquiries@arthurgraceresidential.com <https://www.arthurgraceresidential.com>