



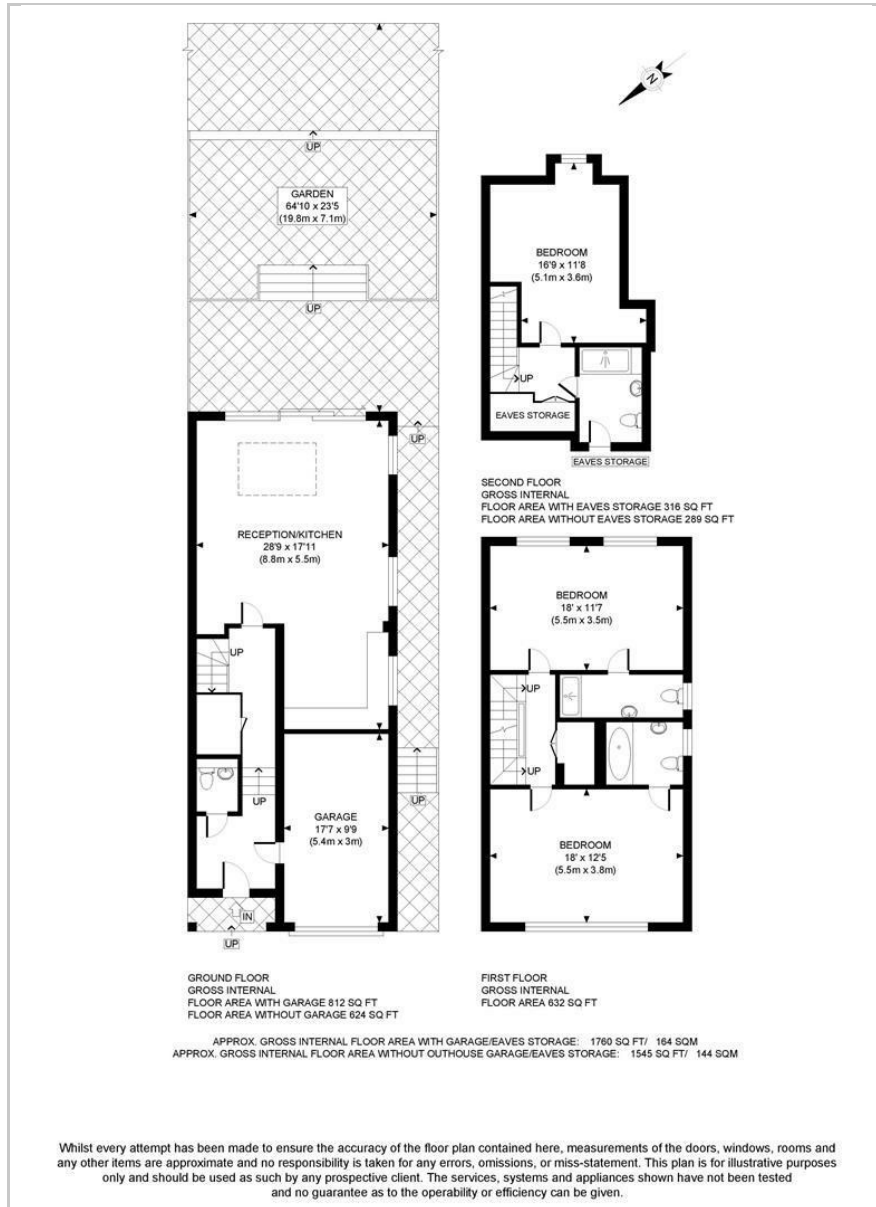
arthur grace
RESIDENTIAL



Homefield Road, Rickmansworth, WD3 5QJ
Guide Price £950,000



Floor Plan



Accommodation

- LAST NEW BUILD HOME REMAINING
- Semi detached with integral garage & off street parking
- 3 bedrooms (with fitted wardrobes to bedrooms 1 & 2)
- 3 bathrooms & downstairs WC
- Open plan kitchen, lounge family room nearly 28 ft X 18 ft
- SE facing tiered landscaped garden
- 1748 sq ft
- 0.2 miles to Chorleywood Station & High Street
- Council Tax Band G
- EPC B



These particulars, whilst believed to be accurate are set out as a general outline only for guidance and do not constitute any part of an offer or contract. Intending purchasers should not rely on them as statements of representation of fact, but must satisfy themselves by inspection or otherwise as to their accuracy. No person in this firm's employment has the authority to make or give any representation or warranty in respect of the property.