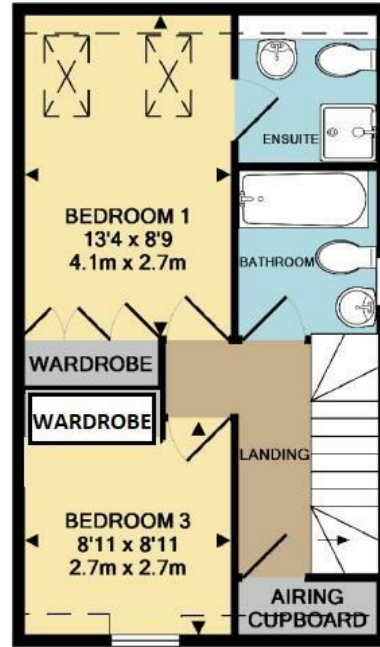
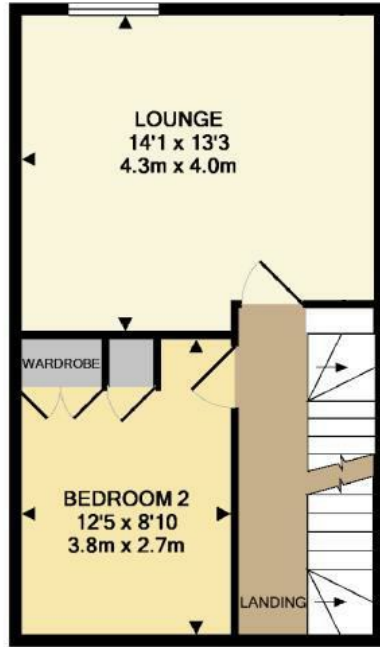
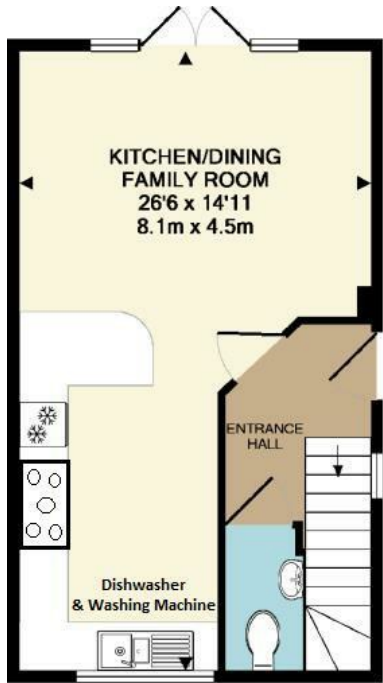


A three-story red brick house with a steep gable roof and dormer windows. The house has a blue front door with a small porch. A white car is parked in front of the house. The street is wet, suggesting it has recently rained. Other houses are visible in the background.

**22 GREENACRE WAY
BISHOPS CLEEVE
CHELTENHAM
GL52 8SJ**



22 Greenacre Way

GROUND FLOOR
APPROX. FLOOR
AREA 376 SQ.FT.
(35.0 SQ.M.)

1ST FLOOR
APPROX. FLOOR
AREA 377 SQ.FT.
(35.1 SQ.M.)
TOTAL APPROX. FLOOR AREA 1131 SQ.FT. (105.1 SQ.M.)

2ND FLOOR
APPROX. FLOOR
AREA 377 SQ.FT.
(35.1 SQ.M.)

FLOORPLAN - FOR GUIDANCE ONLY - NOT TO SCALE





Per Calendar Month

£1,400 Per Calendar

IN THE FIRST INSTANCE EMAIL YOUR ENQUIRY ONLY - Spacious three double bedroom home arranged over three floors with garage and parking, double glazing and gas central heating. The accommodation is arranged to provide entrance hall, cloakroom (wc), lovely open plan kitchen/dining/family room that opens on to a rear garden. On the first floor is the large living room and a double bedroom with wardrobe. On the second floor is the main bedroom (with nice views) and an en suite shower room, there is also a further double bedroom and family bathroom.









Energy Efficiency Rating		
	Current	Potential
Very energy efficient - lower running costs		
(92 plus) A		88
(81-91) B		
(69-80) C	78	
(55-68) D		
(39-54) E		
(21-38) F		
(1-20) G		
Not energy efficient - higher running costs		
England & Wales	EU Directive 2002/91/EC	

Sure Property Group
 23 Bath Street
 Cheltenham
 Gloucestershire
 GL50 1YA
 01242 261222/ 241200
 info@surecheltenham.co.uk

Tewkesbury Borough Council
 COUNCIL TAX BAND C