



LYPIATT COURT

**11 LYPIATT COURT
LYPIATT ROAD
CHELTENHAM
GL50 2QW**





Asking Price

£235,000

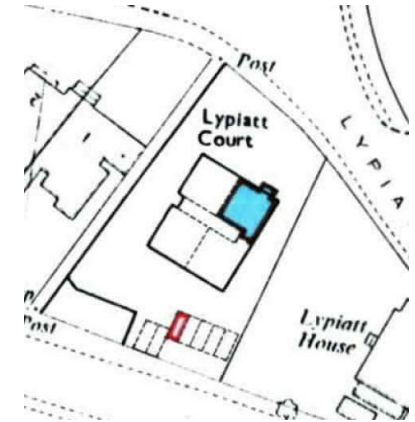
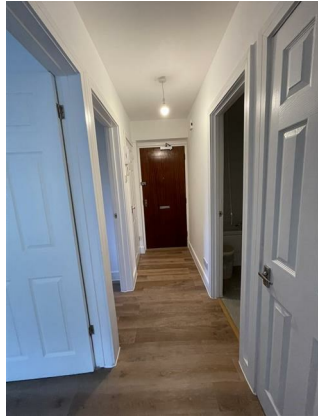
A superbly refurbished second floor apartment found in the popular Montpelier/Lansdown Area within walking distance of the bustling Promenade/Montpellier with its range of boutique shops and eateries including The Ivy. Cheltenham Town Centre is located just a short walk away too.

The accommodation has the benefit of a modern electric heating system and double glazing. The accommodation offers entrance hall with two storage cupboards, re-fitted kitchen/breakfast room, living room with French doors to the balcony which has lovely views. There is a double bedroom with built-in wardrobe also with very pleasant views, the bathroom has also been refitted. The property benefits from an allocated parking space also.

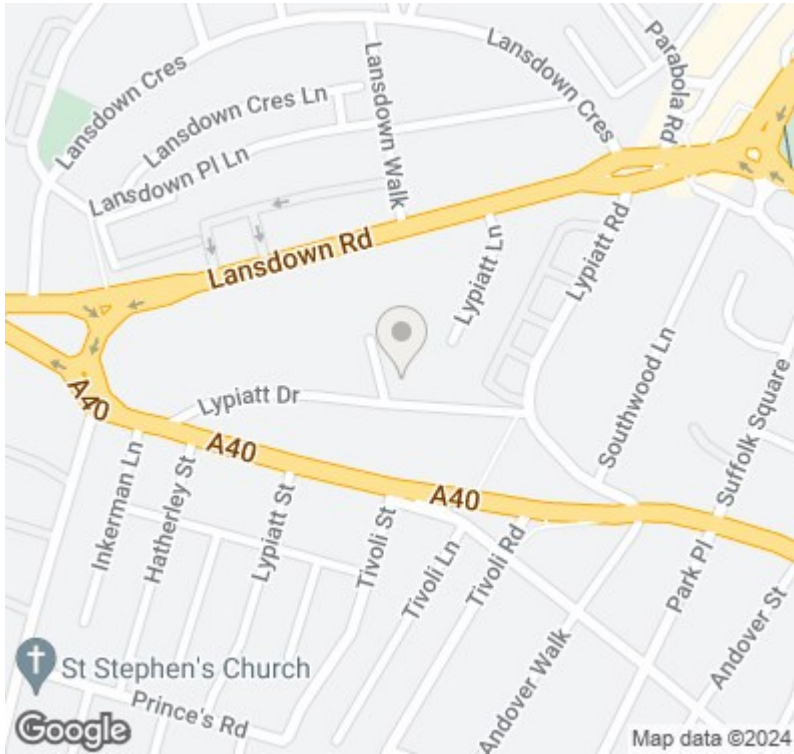
Lypiatt Court has stair and lift access.







Local Authority	Council Tax	
Gloucestershire	Band:	B
	Annual Price:	£1,678
Conservation Area	Flood Risk	
Central	No Risk	
Floor Area	Plot Size	
0 ft ² / 0 m ²	0.06 Acres (2 Plots)	
Mobile Coverage	Broadband	
EE	Basic	15 Mbps
Vodafone	Superfast	81 Mbps
Three	Ultrafast	1000 Mbps
O2		
Satellite / Fibre TV Availability		
BT	✓	
Sky	✓	
Virgin	✓	



Energy Efficiency Rating		
	Current	Potential
Very energy efficient - lower running costs		
(92 plus) A		
(81-91) B		
(69-80) C		
(55-68) D		
(39-54) E		
(21-38) F		
(1-20) G		
Not energy efficient - higher running costs		
England & Wales	EU Directive 2002/91/EC	

Sure Property Group
 23 Bath Street
 Cheltenham
 Gloucestershire
 GL50 1YA
 01242 261222/ 241200
 info@surecheltenham.co.uk

Cheltenham Borough Council
 COUNCIL TAX BAND B

Leasehold