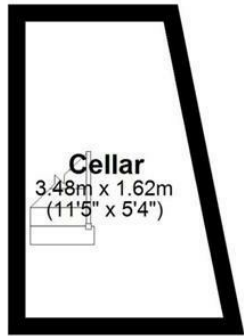


**37 HANOVER STREET
CHELTENHAM
GLOUCESTERSHIRE
GL50 4HE**

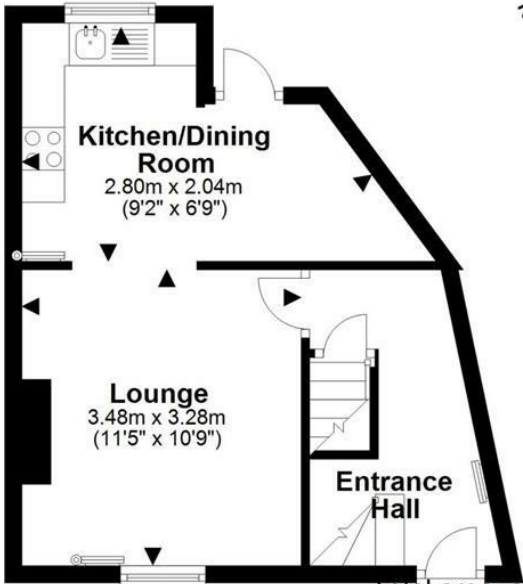
Basement

Approx. 6.9 sq. metres (73.8 sq. feet)



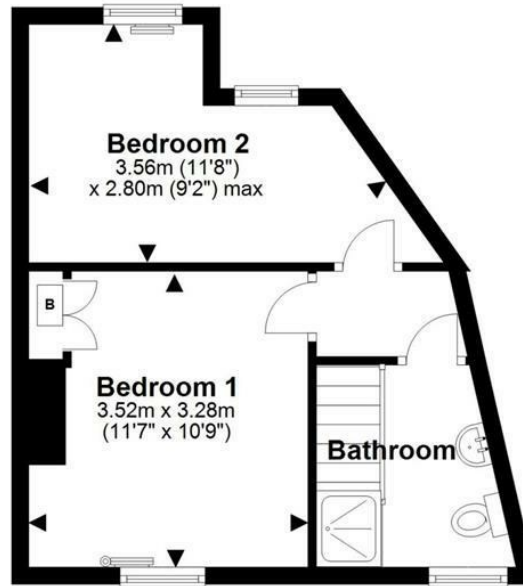
Ground Floor

Approx. 28.5 sq. metres (306.6 sq. feet)



First Floor

Approx. 28.9 sq. metres (310.6 sq. feet)



Total area: approx. 64.2 sq. metres (691.0 sq. feet)

Please note this floor plan is for marketing purposes and is to be used as a guide only. All efforts have been made to ensure its accuracy. Plan produced using PlanUp.

37, Hanover Street, CHELTENHAM

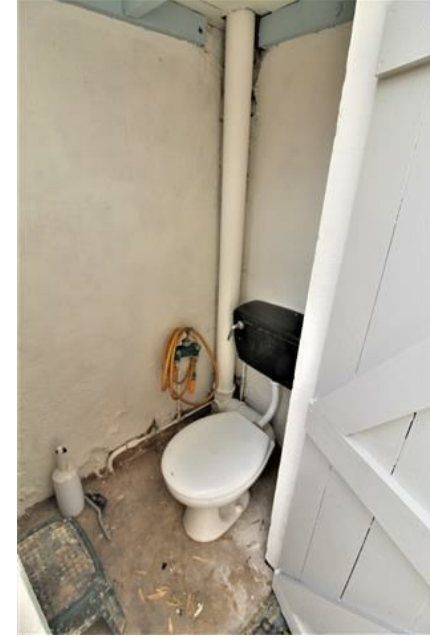




PCM £1,250 PCM

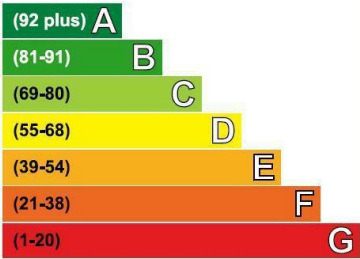
IN THE FIRST INSTANCE PLEASE EMAIL US YOUR REQUEST TO VIEW - A TWO DOUBLE BEDROOM TERRACED HOUSE with refitted kitchen and bathroom. The accommodation comprises: entrance hall, stairs down to small basement room/office, living room, open plan kitchen/dining room, courtyard garden with outside w.c./storage cupboard, gravelled gated access to rear of the property. Upstairs are two double bedrooms and refitted bathroom with shower cubicle. The property also benefits from double glazing, gas central heating and gated gravelled front garden. No allocated parking but parking on the street outside the property.





Energy Efficiency Rating

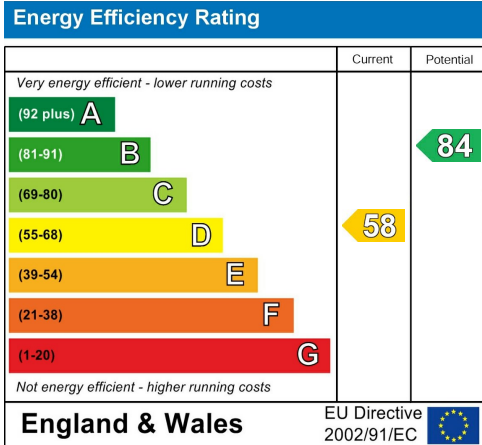
Very energy efficient - lower running costs



Not energy efficient - higher running costs

Current	Potential
58	84

Local Authority Cheltenham	Council Tax Band: B Annual Price: £1,678
Conservation Area Central	Flood Risk No Risk
Floor Area 731 ft ² / 68 m ²	Plot Size 0.02 Acres
Mobile Coverage EE ● Vodafone ● Three ● O2 ●	Broadband Basic 13 Mbps Superfast 80 Mbps Ultrafast 1000 Mbps
Satellite / Fibre TV Availability BT ✓ Sky ✓ Virgin ✓	



Sure Property Group
 23 Bath Street
 Cheltenham
 Gloucestershire
 GL50 1YA
 01242 261222/ 241200
 info@surecheltenham.co.uk

Cheltenham COUNCIL TAX BAND A