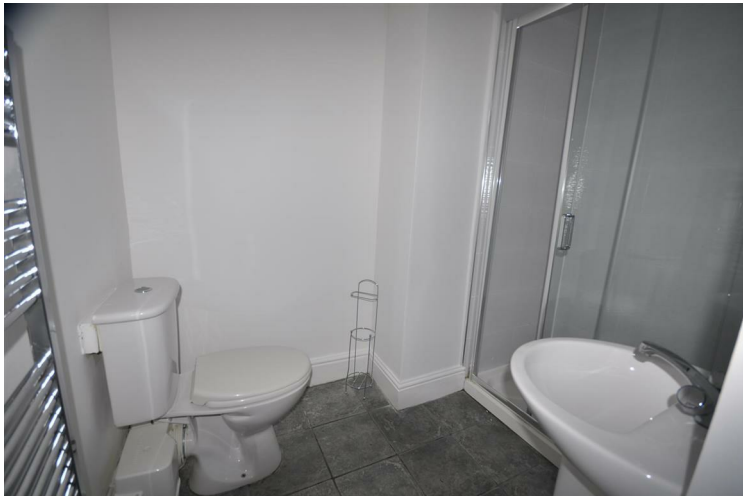




**ROOM 4, 18 BENNINGTON STREET  
CHELTENHAM  
GL50 4ED**





# Per Calendar Month

## £570 Per Calendar

PLEASE EMAIL YOUR ENQUIRY IN THE FIRST INSTANCE

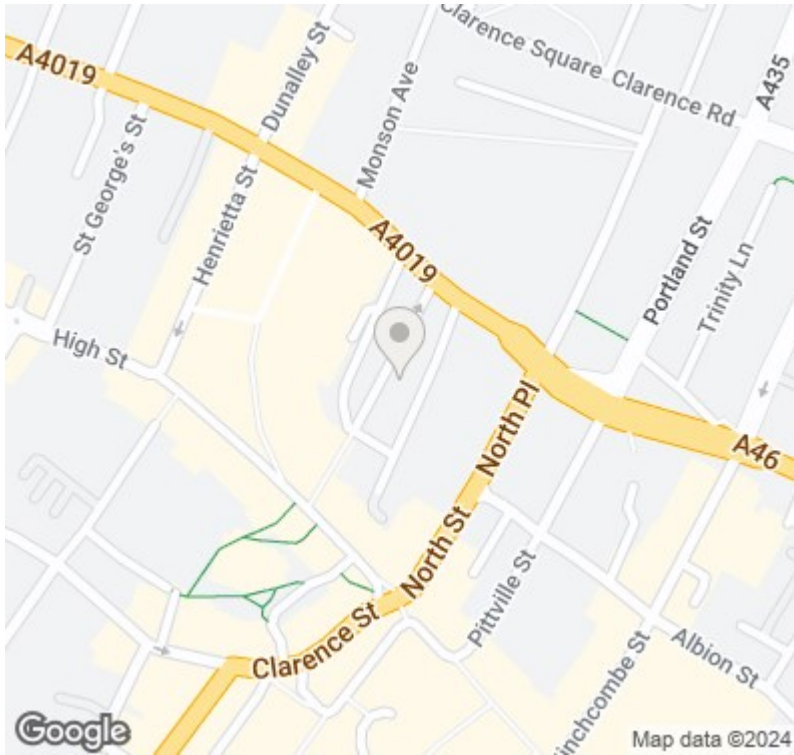
**\*\* TWO ROOMS AVAILABLE IN A SIX BEDROOM FURNISHED HOUSE SHARE \*\***

SURE PROPERTY GROUP CHELTENHAM are pleased to offer this SIX BEDROOM HOUSE that has been finished to an exceptionally high standard. The property has been designed to accommodate six individuals (professionals or students). The property provides a double room for each individual with shared Kitchen, Sitting Room and Bathroom facilities. Situated over three floors, every level provides two rooms which share a Large Shower and W/C, all rooms are FURNISHED with Bed, Wardrobe & Chest of Drawers. The FITTED KITCHEN is of high quality and includes two large Fridge/Freezers. The Lounge area comes with a Sofa. There is a UTILITY ROOM in the basement with Washing Machine and Tumble Dryer. Room 4 is located on the FIRST floor to the rear of the property. Situated close to the Brewery Complex and Town Centre. ALL BILLS ARE INCLUSIVE - SINGLE PERSON OCCUPANCY ONLY









Energy Efficiency Rating		
	Current	Potential
Very energy efficient - lower running costs		
(92 plus) <b>A</b>		
(81-91) <b>B</b>		<b>81</b>
(69-80) <b>C</b>		
(55-68) <b>D</b>	<b>58</b>	
(39-54) <b>E</b>		
(21-38) <b>F</b>		
(1-20) <b>G</b>		
Not energy efficient - higher running costs		
<b>England &amp; Wales</b>	EU Directive 2002/91/EC	

Sure Property Group  
 23 Bath Street  
 Cheltenham  
 Gloucestershire  
 GL50 1YA  
 01242 261222/ 241200  
 info@surecheltenham.co.uk

Included COUNCIL TAX BAND  
 Exempt