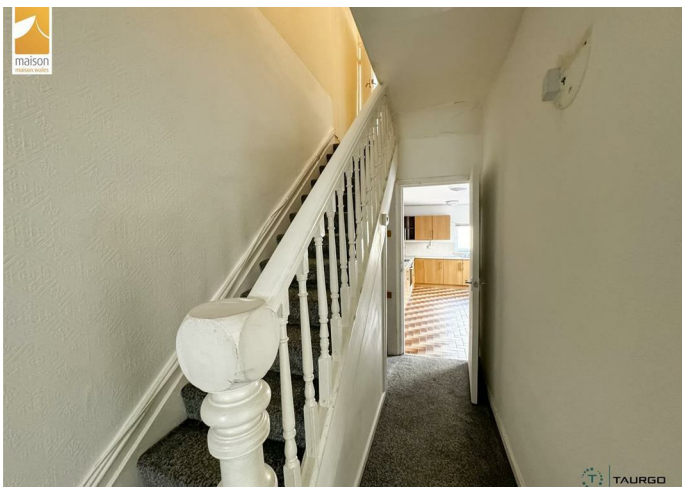




FREEHOLD



House - Terraced

15 LIONEL ROAD, CARDIFF, CF5 1HN

Offers In The Region

£310,000

FEATURES

- No Chain
- 3 Bedroom
- Low Maintenance Garden



maison
maison.wales

TAURGO

TAURGO

3 Bedroom House - Terraced located in Cardiff

Welcome to this terraced house brimming with potential on Lionel Road, Canton! This delightful property boasts 2 reception rooms, 3 bedrooms, and 1 bathroom, offering a comfortable and spacious living space spanning 1,399 sq ft.

The absence of a chain means a smooth and hassle-free buying process, allowing you to make this house your home without delay.

Situated in a prime location, you'll find yourself in close proximity to the beautiful Victoria Park, perfect for leisurely strolls and enjoying the outdoors. Additionally, with shops right on your doorstep, daily errands and shopping trips are convenient and effortless.

Nestled on a quiet street, this property provides a peaceful retreat from the hustle and bustle of city life, offering a tranquil and serene environment to call your own.

With its blank canvas appeal and abundant potential, this house presents a wonderful opportunity to create the home of your dreams. Don't miss out on the chance to own a property in an impressive location - book a viewing today and envision the possibilities that await you at this Cardiff abode full of potential on Lionel Road.



Call us on
0292 009 0700

post@maison.wales
www.maison.wales

Council Tax Band

| Energy Efficiency Rating | | Current | Potential |
|--|---|-------------------------|-----------|
| <i>Very energy efficient - lower running costs</i> | | | |
| (92 plus) | A | | 82 |
| (81-91) | B | | |
| (69-80) | C | | |
| (55-68) | D | 65 | |
| (39-54) | E | | |
| (21-38) | F | | |
| (1-20) | G | | |
| <i>Not energy efficient - higher running costs</i> | | | |
| England & Wales | | EU Directive 2002/91/EC | |

Agents Note: Whilst every care has been taken to prepare these particulars, they are for guidance purposes only. All measurements are approximate and are for general guidance purposes only and whilst every care has been taken to ensure their accuracy, they should not be relied upon and potential buyers are advised to recheck the measurements.

