



TO LET

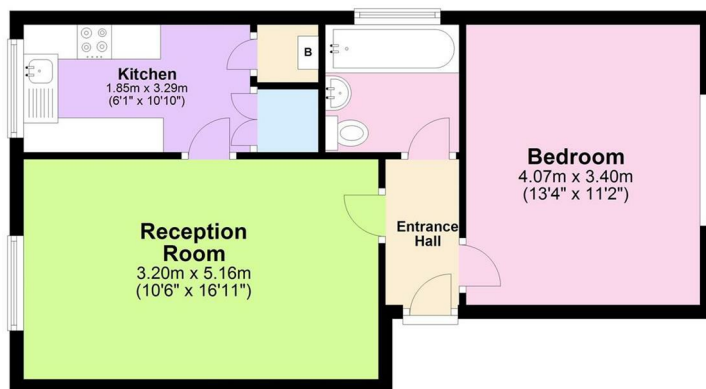
22 Kimpton Close, Hemel Hempstead, HP2 7PN

£950 Per month

Mulburries



- No Upper Chain
- Low Service Charge
- 87 Year Remaining on Lease
- Second Floor Flat
- Peppercorn Ground Rent
- Council Tax Band - B



Second Floor

Approx. 45.5 sq. metres (490.3 sq. feet)

Total area: approx. 45.5 sq. metres (490.3 sq. feet)

Although Mulburries LTD ensures the highest level of accuracy, measurements of doors, windows and rooms are approximate and no responsibility is taken for error, omission or misstatement. These plans are for representation purpose only as defined by RICS code of measurement practice. No guarantee is given on total square footage of the property within this plan. The figure icon is for the initial guidance only and should not be relied on as a basis of valuation. Plan produced using PlanUp.



THE PROPERTY

Welcome to Kimpton Close, Hemel Hempstead - a charming location for this delightful flat! Situated on the second floor, this property boasts a cosy reception room, perfect for relaxing after a long day. With one bedroom and one bathroom, this flat is ideal for individuals or couples looking for a comfortable living space.

Measuring 495 sq ft, this flat offers a good amount of space for all your needs. The low service charge and peppercorn ground rent make this property even more appealing, allowing you to enjoy your space without breaking the bank.

For those interested in investment opportunities, this flat offers an impressive 8% rental yield, making it a lucrative option for potential landlords. Additionally, being in Council Tax band B ensures reasonable council tax payments.

Convenience is key with communal parking available, ensuring you never have to worry about finding a spot after a long day. Don't miss out on the chance to own or rent this lovely flat in a desirable location. Contact us today to arrange a viewing and make this property your new home!

SITUATION

Directions