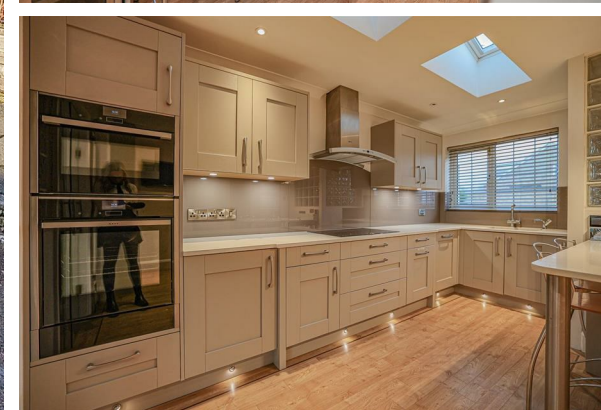
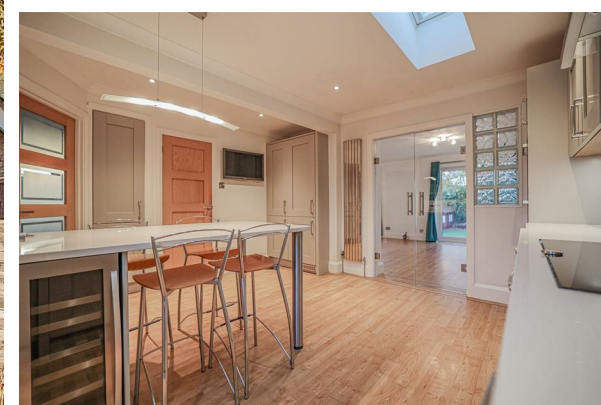


A purple square logo with the word "Mulburries" in white serif font.The words "TO LET" in a large, white, serif font, positioned in the bottom left corner of the main property image.

10A Parkhill Road, Hemel Hempstead, HP1 1TW

£2,800 Per month



- Immaculate Interiors
- Over 2000sq Feet of Internal Space
- Quiet Cul De Sac
- Huge Basement For Storage
- Lower Ground Floor En Suite
- Lower Maintenance Garden
- Newly Fitted Kitchen
- Garage

THE PROPERTY

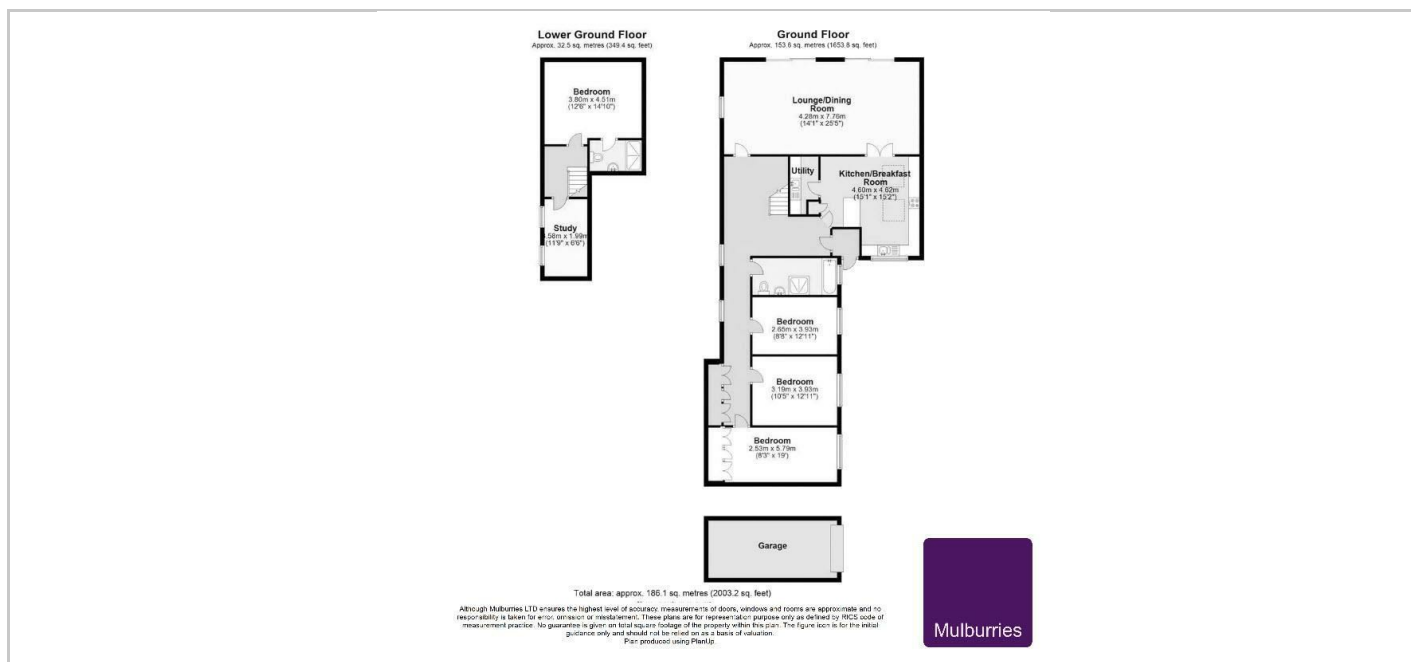
****Available Immediately**** . Nestled in the serene Parkhill Road of Hemel Hempstead, this charming detached bungalow offers a tranquil retreat for those seeking spacious and comfortable living. Boasting two reception rooms, four generous bedrooms, and two modern bathrooms, this property is perfect for families or those who love to entertain.

Spanning over 2,000 square feet, this bungalow provides ample space for all your needs. The property features an elegant newly fitted kitchen/breakfast room with sleek granite worktops, perfect for whipping up culinary delights. The immaculate interiors exude a sense of warmth and style, making it a welcoming place to call home.

Conveniently located on a quiet cul de sac, this residence offers privacy and peace. With a separate garage and off-street parking for two vehicles, parking will never be an issue for you or your guests. The low maintenance private rear garden is ideal for relaxing outdoors or hosting summer gatherings.

One of the standout features of this property is the absence of an upper chain, providing a smooth and hassle-free buying process. Whether you're looking for a family home or a peaceful abode to retire to, this detached bungalow ticks all the boxes. Don't miss out on the opportunity to make this wonderful property your own.

SITUATION



Directions