

TO LET

Anderston Quay,
Glasgow, G3 8BW

RETAIL / OFFICE / CAFÉ PREMISES

1,146 sq ft

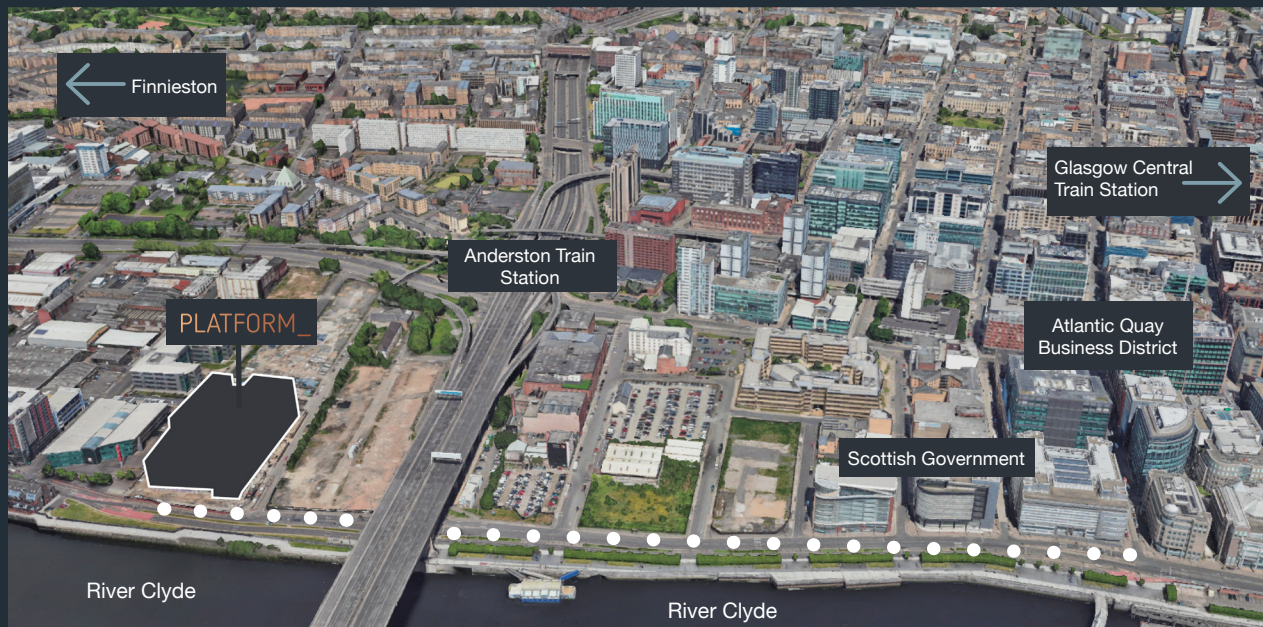


PLATFORM_
platform.life/glasgow

NEW COMMERCIAL SPACE MOMENTS FROM GLASGOW CENTRAL

Discover prime commercial space at **PLATFORM_** in Glasgow

- 1,146 sq ft of available space
- 14 minutes from Glasgow Central Train Station
- 3,000 new residents on site
- Located in the regen area estimating 6,000+ new residents over the next 5 years
- Minutes from the financial district



BUILDING HIGHLIGHTS

PLANNING

The unit benefits from Class 1A & 3 usage

RENT & SERVICE CHARGE

Details available on request

SPECIFICATION

Shell finish



24/7
RECEPTION



SAFE &
SECURE



498
APARTMENTS



LOCAL
COMMUNITY



LOCAL
SHOPPING



BRAND NEW
DEVELOPMENT



HIGH SPEED
BROADBAND



FULLY SERVICED
SHELL CONDITION

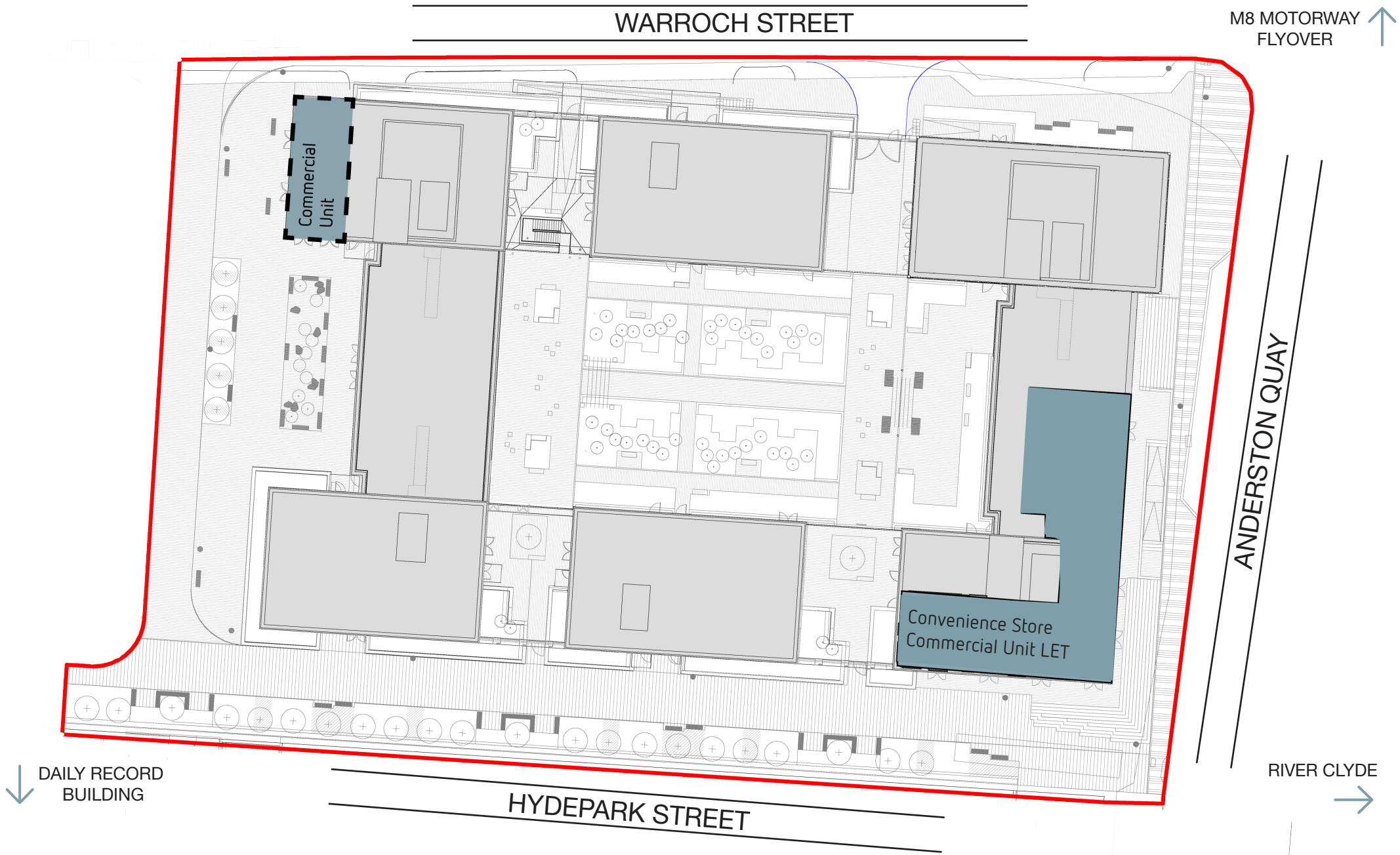


CITY CENTRE
LOCATION



7-MINUTE WALK
TO ANDERSTON STATION

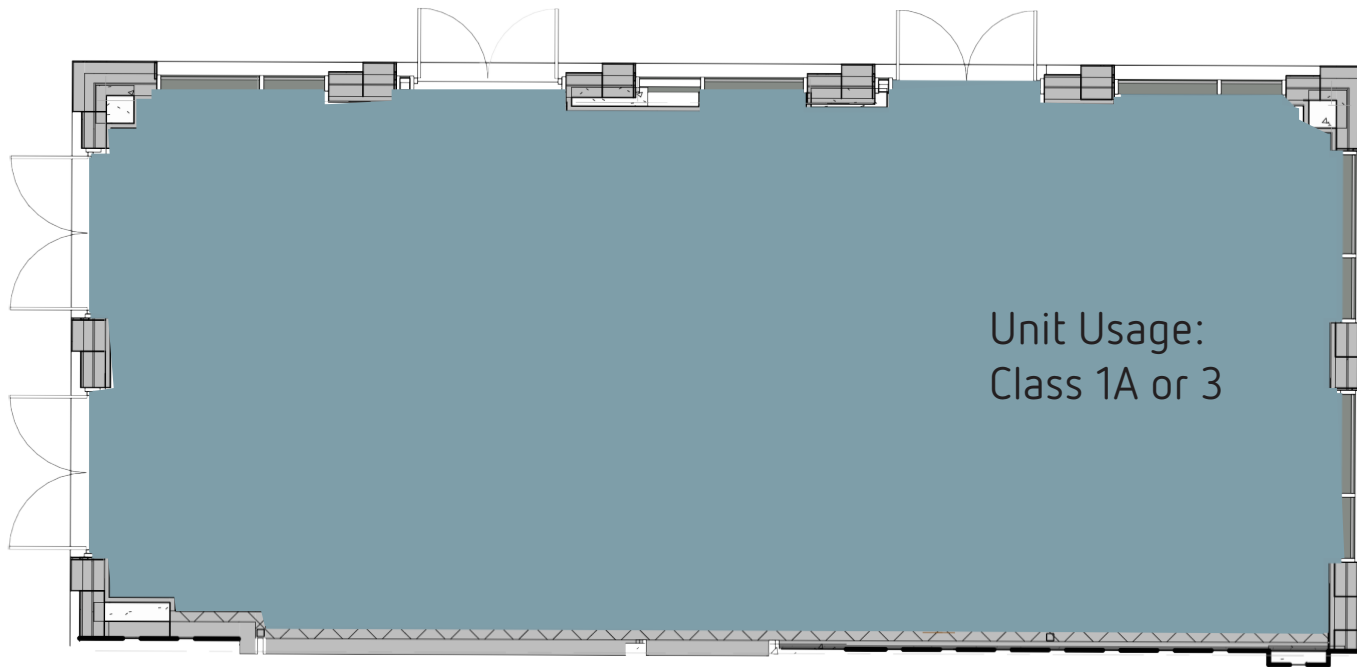
SITE PLAN



INTERNAL UNIT PHOTOS



UNIT FLOORPLAN



TOTAL - 1,146 sq ft*

UNIT INFO

- > This unit benefits from Class 1A or 3 usage
- > Frontage onto Warroch Street
- > Located on the ground floor, the unit also benefits from heavy foot traffic in the area
- > The unit permits retail, office and café premises
- > Connections to water and energy provided

*A FULL SET OF FLOORPLANS ARE AVAILABLE IN PDF
AND DWG FORMAT UPON REQUEST

FURTHER INFORMATION

Anderston Quay, Glasgow, G3 8BW

Terms

Available on the basis of a new full repairing and insuring lease for a negotiable period of time, subject to upward only rent reviews

Get in touch

For more information please contact the agent below

GREGOR BROWN

T: (0) 141 212 0059

M: (0) 7717 447 897

E: gb@gmbrown.co.uk

W: www.gmbrown.co.uk

G·M·BROWN

