

# OCKFORD DRIVE





# OCKFORD DRIVE

GODALMING, SURREY, GU7 2LT

Available: 9th May 2025

£1,650 PCM (Per Calendar Month)

Not specified, 2 Bedroom  
1 Bathroom, 1 Reception  
Unfurnished

---

## Summary

Located within easy walking distance of the town centre and mainline station, this charming two-bedroom house with off-street parking and garage.

## Key Features

- Walking Distance to Town Centre
- Off-street parking for one car
- Two Bedrooms
- Garden
- Garage
- Views







## THE PROPERTY

### Description

This well-presented semi-detached bungalow features a bright and spacious sitting/dining room with a bay window, and a modern, separate kitchen with direct access to the outside. The accommodation includes two bedrooms—one double and one single—along with a family bathroom fitted with a bath and shower over, wash basin, and WC.

### Outdoors

The property benefits from pleasant surrounding garden and separate patio, providing a sense of space and greenery. A private garage is included which is located just off the road, as well as off-street parking, offering both convenience and additional storage. Additionally, There is also a sizable shed, ideal for storage or keeping gardening equipment.



### Location

Situated in a quiet residential area, Ockford Drive is approximately 0.6 miles from Godalming High Street and 0.8 miles from Godalming station, with direct services to London Waterloo in around 45 minutes. The A3 is approximately 1.5 miles away, providing easy access to Guildford and London.

### Additional Information

Services: Mains gas, electricity, water and waste

EPC: Band D

Council Tax: Waverley Borough Council – Band C

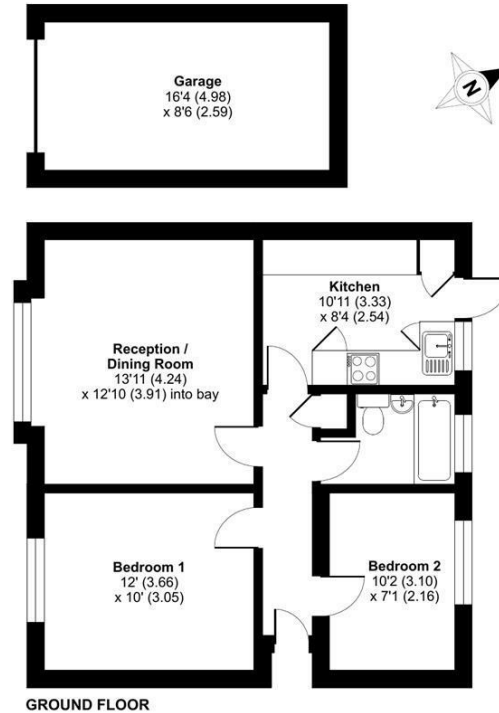
Holding Deposit: £380.00 (one week's rent)

Security Deposit: £1,903.00 (five weeks' rent)



### Ockford Drive, Godalming, GU7

Approximate Area = 576 sq ft / 53.5 sq m  
Garage = 138 sq ft / 12.8 sq m  
Total = 714 sq ft / 66.3 sq m  
For identification only - Not to scale



Floor plan produced in accordance with RICS Property Measurement 2nd Edition,  
Incorporating International Property Measurement Standards (IPMS2 Residential). © richcom 2025.  
Produced for Grantleys. REF: 1279799

### Godalming Lettings

26 Church Street  
Godalming  
Surrey  
GU7 1EW

Tel: 01483 407630

