



15 Nelson Street, Congleton,  
Cheshire, CW12 4BS



STEPHENSON BROWNE





STEPHENSON BROWNE

£800 PCM



**\*\* AVAILABLE MID AUGUST \*\*** This well presented two up two down mid terrace property is perfectly placed in the Town Centre just a short walk away from a variety of different shops and amenities, close to transport links, Marfield's Primary School and The Nursery.

Access through the front door will bring you straight into the living room leading you through to the open dining area which is also currently being used as another lounge space. Off the dining room is the Galley kitchen which provides many fitted appliances including fridge freezer, dishwasher, washing machine, gas oven and hob with extractor.

To the first floor is a landing with access to two great sized bedrooms and a very spacious four piece suite bathroom.

Externally to the rear of the property is a low maintenance private enclosed yard with an outbuilding excellent for storage.





- **Town Centre Location**
- **Private Enclosed Rear Yard**
- **Available Soon!**

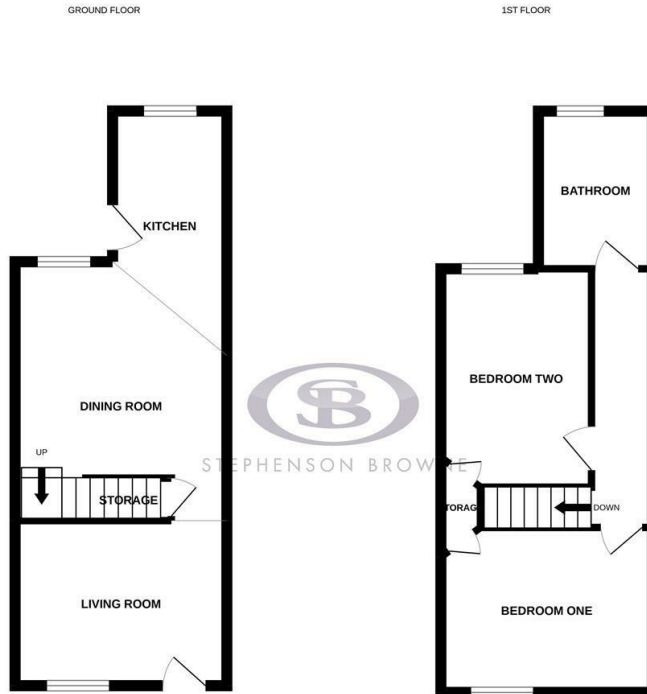
- **Two Good Size Bedrooms**
- **Two Reception Rooms**

View all of our properties at [www.stephensonbrowne.co.uk](http://www.stephensonbrowne.co.uk)





STEPHENSON BROWNE



Whilst every attempt has been made to ensure the accuracy of the floorplan contained here, measurements of walls, windows, doors and any other items are approximate and no responsibility is taken for any error or omission in this statement. The floor plan is for illustrative purposes only and should be used in conjunction with the prospective purchaser. The services, systems and appliances shown have not been tested and no guarantee as to their operability or efficiency can be given.  
Made with Metreplan ©2022

21 High Street, Congleton, CW12 1BH Tel: 01260 545600  
View all of our properties at [www.stephensonbrowne.co.uk](http://www.stephensonbrowne.co.uk)



**NOT TO SCALE** These floor plans are given as a guide only. Full completed measurements and details should be verified by any intending purchasers legal representative.

NOTICE: Stephenson Browne for themselves and for the vendors or lessors of this property whose agents they are give notice that: (1)the particulars are set out as a general guideline only for the guidance of intending purchasers or lessees, and do not constitute, nor constitute part of, an offer or contract; (2)all descriptions, dimensions, references to condition and necessary permissions for use and occupation, and other details are given in good faith and are believed to be correct but any intending purchasers or tenants should not rely on them as statements or representations of fact but must satisfy themselves by inspection or otherwise as to the correctness of each theme; (3)no person in the employment of Stephenson Browne has any authority to make representation or warranty whatever in relation to this property. (4)fixtures & fittings are subject to a formal list supplied by vendors solicitors. **Referring to:** Move with Us Ltd **Average Fee:**£123.64