



CARTERREMY

ESTATES

Gumley Road, Grays, RM20

Guide Price £300,000-£350,000

🛏️ 2 🪑 2 🚗 1



Guide price £300,000 to £350,000 Welcome to this stunning 2-bedroom terraced house located in the heart of Grays. Situated close to various local amenities and excellent transport links, this property offers a fantastic opportunity for first-time buyers or those looking to downsize.

As you enter this charming home, you will immediately notice the spaciousness it offers. The ground floor features a convenient W.C., a family bathroom, a comfortable lounge area, and a well-appointed kitchen. The kitchen provides ample space for all your day-to-day appliances, ensuring that cooking and meal preparation are a breeze.

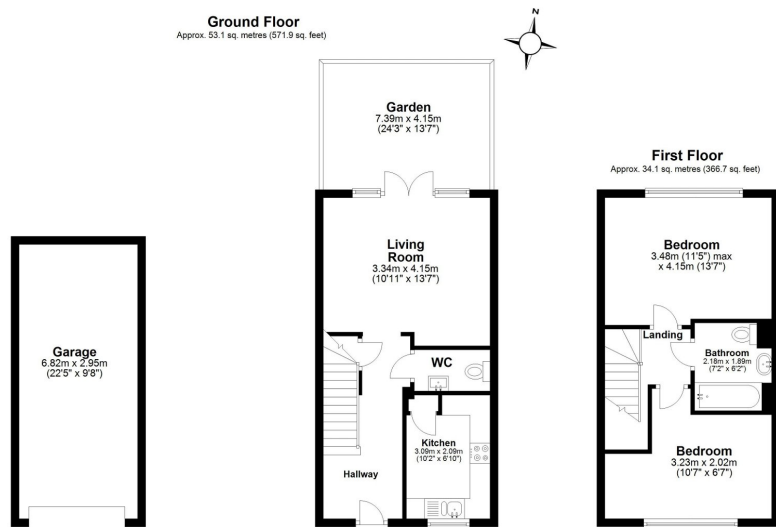
The property boasts two generously sized double bedrooms, providing plenty of room for relaxation and privacy. Whether you need space for guests or a home office, these bedrooms offer versatility to suit your needs.

One of the standout features of this property is the garage, providing secure parking and additional storage space. The garden is of a good size, perfect for enjoying the summer months or for those with a green thumb.

Convenience is key with this property, as it is just minutes away from local supermarkets such as Aldi and Morrisons. For a wider range of shopping options, the renowned Lakeside Shopping Centre is only a short drive away. Additionally, Grays town centre is within easy reach, ensuring that all your day-to-day needs are easily accessible.

Don't miss out on the opportunity to make this house your home. Pick up the phone today and arrange a viewing to avoid disappointment. This property won't be on the market for long, so act quickly to secure your future in this lovely Grays neighborhood.





Total area: approx. 87.2 sq. metres (938.6 sq. feet)
Gumley Road

- 2-bedroom terraced house in the heart of Grays.
- Spacious living space with a lounge and well-appointed kitchen
- Two double bedrooms offering versatility and privacy.
- Good-sized garden for enjoying the summer months
- Easy access to Lakeside Shopping Centre for a wider range of shopping options.
- Close proximity to local amenities and transport links.
- Ground floor W.C. and family bathroom.
- Garage for secure parking and extra storage space.
- Minutes away from local supermarkets and Grays town centre
- Guide Price £300,000-£350,000

