



CARTER

CARTERREMY

ESTATES

Lodge Lane, Grays, RM17

£565,000-£635,000

🛏️ 4 🚿 1 🚗 1



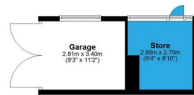
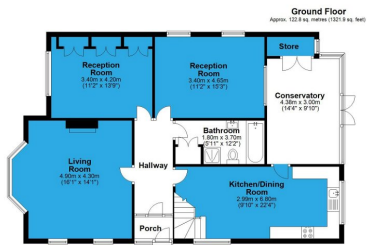
Guide price £565,000 to £635,000 Welcome to this stunning 4-bedroom detached property, located in the heart of North Grays. Situated just moments away from local amenities, excellent transport links, and top-rated schools, this home offers convenience and comfort within walking distance.

As you step inside, you'll be greeted by a bright and airy atmosphere complemented by tastefully updated decor throughout. The bungalow boasts four spacious double bedrooms, ensuring ample space for all your family's needs. The generous living space provides a cozy area to relax and unwind, while the large kitchen diner offers plenty of room for your day-to-day appliances and culinary adventures.

One of the standout features of this property is its south-facing rear garden, creating the perfect oasis to enjoy during the summer months. Whether you're entertaining guests or simply seeking a tranquil space to unwind, this garden is sure to impress.

This must-see property has been priced exceptionally well, offering fantastic value for its many desirable features. Don't miss out on the opportunity to make this house your home. Pick up the phone today and arrange a viewing to fully appreciate all that this property has to offer.





Total area: approx. 158.7 sq. metres (1708.4 sq. feet)
Lodge Lane

- Stunning 4-bedroom detached property
- Close to local amenities, transport links, and schools
- Four spacious double bedrooms
- Generous kitchen diner with ample room for appliances
- Arrange a viewing to fully appreciate its features
- Located in the heart of North Grays
- Bright and airy with updated decor
- Large living space
- South-facing rear garden for summer relaxation
- Guide Price £565,000-£635,000

