



CARTER

**CARTER**REMY

ESTATES



# Millbrook Gardens, Gidea Park, RM2

Guide Price £675,000-£750,000

🛏 3 🚿 2 🚻 2





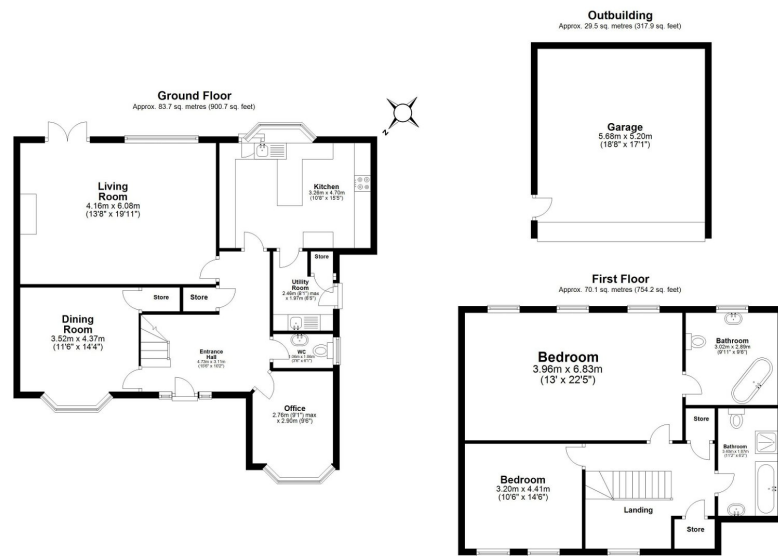
£675,000-£750,000 Exquisite Three-Bedroom Detached Executive Chalet Bungalow with impeccable presentation. Nestled just off the A12, boasting gated access and a spacious double garage.

Step into the charm of Millbrook Gardens, a meticulously designed family haven set on its private plot. The grand gated driveway welcomes you to this picturesque abode. Inside, an inviting entrance hall reveals an impressive oak staircase and access to all rooms. Hosting gatherings is a delight in the separate dining room, while the elegant lounge, adorned with a striking fireplace and French doors, seamlessly connects indoor and outdoor living. The kitchen, adorned with solid Oak units and top-tier appliances, is complemented by a breakfast bar and utility room. A versatile study/guest bedroom and cloakroom complete the ground floor.

Ascend the oak staircase to discover the luxurious master bedroom, boasting three dormer windows and a sumptuous en suite with a freestanding roll-top bath. An additional double bedroom and four-piece family bathroom grace the upper level.

Conveniently situated just off the A12, this residence offers swift commuter access to London and the M25. Local amenities, from shops to schools, are within easy reach, ensuring both convenience and comfort for discerning homeowners."





Total area: approx. 183.3 sq. metres (1972.8 sq. feet)  
**Millbrook Gardens**

- Exquisite Three-Bedroom Detached Executive Chalet Bungalow
- Spacious entrance hall with impressive oak staircase
- High-standard kitchen with solid Oak units, breakfast bar, and utility room
- Luxurious master bedroom with three dormer windows and sumptuous en suite
- Close proximity to local amenities including shops and schools
- Nestled just off the A12 with gated access and double garage
- Separate dining room and elegant lounge with French doors to garden
- Versatile study/guest bedroom and cloakroom on ground floor
- Additional double bedroom and four-piece family bathroom upstairs
- Guide Price £675,000-£750,000

