



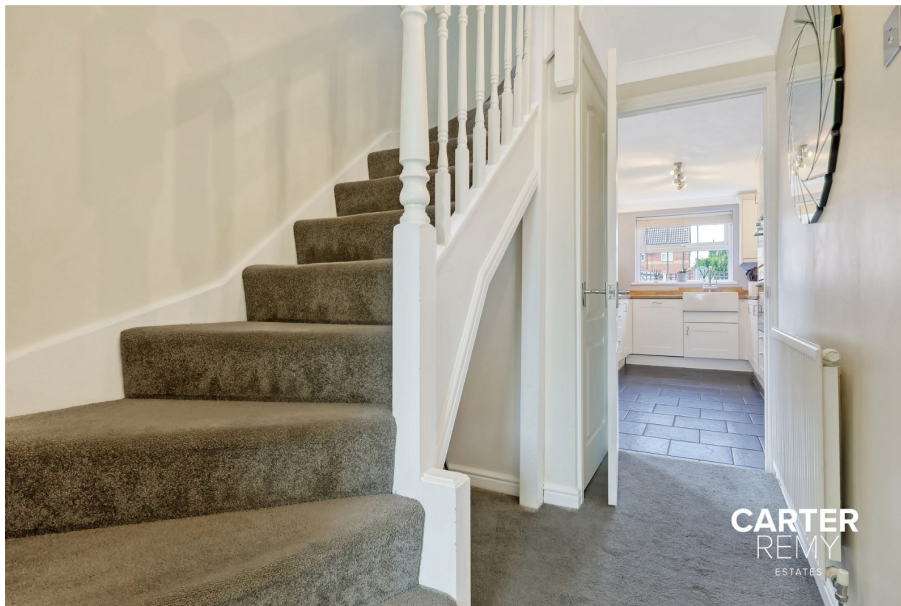
CARTER

CARTERREMY

ESTATES

Bristowe Drive, Orsett, RM16
Guide Price £485,000-£545,000

🛏 4 🚿 2 🚺 2



Guide price £485,000 to £545,000 Welcome to Orsett's hidden gem! This captivating 4-bedroom detached home is nestled in a highly sought-after, secluded location, offering tranquility and privacy. Prepare to be enchanted as you approach your driveway, providing ample space for 2-3 cars, and step through the front door into a world of freshness and natural light.

As you explore the ground floor, you'll discover two spacious reception rooms, perfect for entertaining guests or simply relaxing with loved ones. An elegant dining area seamlessly connects these rooms, creating a cohesive and inviting living space. The kitchen is a chef's dream, boasting generous dimensions and providing plenty of room for all your culinary essentials.

Convenience is key, and this home doesn't disappoint. A ground floor WC adds to the practicality of the property, while the four generously-sized bedrooms on the upper level ensure there is ample space for everyone. The family bathroom offers a tranquil retreat for relaxation after a long day.

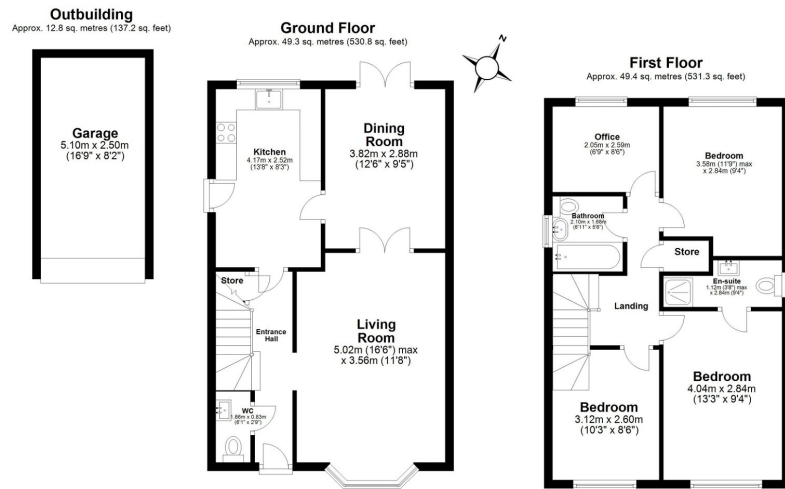
The outside space is equally impressive, with a sizeable garden and the added bonus of a garage. This provides not only storage solutions but also the potential for a workshop or creative space, catering to a variety of needs and interests.

The location is truly outstanding, with the property situated amidst an abundance of fields and parks. Enjoy peaceful evening strolls or lively daytime adventures with the family just moments from your doorstep. For those needing to commute, convenient transport links offer direct access to London, making this home the perfect suburban sanctuary with easy city connections.

Parents will be pleased to find exceptional primary and secondary schools in close proximity, ensuring that education is never far away.

This remarkable property has been priced fairly and is expected to generate significant interest. Don't miss out on the opportunity to make this exceptional house your home. Arrange a viewing today and discover the allure of this exclusive listing.





Total area: approx. 111.4 sq. metres (1199.3 sq. feet)
Bristowe Drive

- Stunning 4-bedroom detached home in a sought-after secluded location in Overland
- Over 500sq ft of spacious reception rooms and a stylish dining area for entertaining guests
- Ground floor WC for added convenience
- Fresh and bright interior with excellent natural light throughout
- Well-appointed kitchen with plenty of space for daily appliances
- Four generously-sized bedrooms on the upper level.
- Tranquil family bathroom offering a relaxing retreat.
- Impressive outdoor space, including a garage for storage or creative use
- £485,000-£545,000
- Conveniently located near fields, parks, and transport links to London

