



CARTERREMY
ESTATES

Fleethall Grove, Grays, RM16
Guide Price £365,000-£405,000

3 1 1



£360,000-£405,000 Introducing this amazing 3 double bedroom end of terrace home located in the highly popular area of Grays. This property is expected to generate a lot of interest, so don't delay in arranging a viewing!

The home is situated in a prime location that offers excellent access to schools, transport links, and amenities. Whether it's local schools for your children or convenient commuting options for work, everything you need is just a stone's throw away.

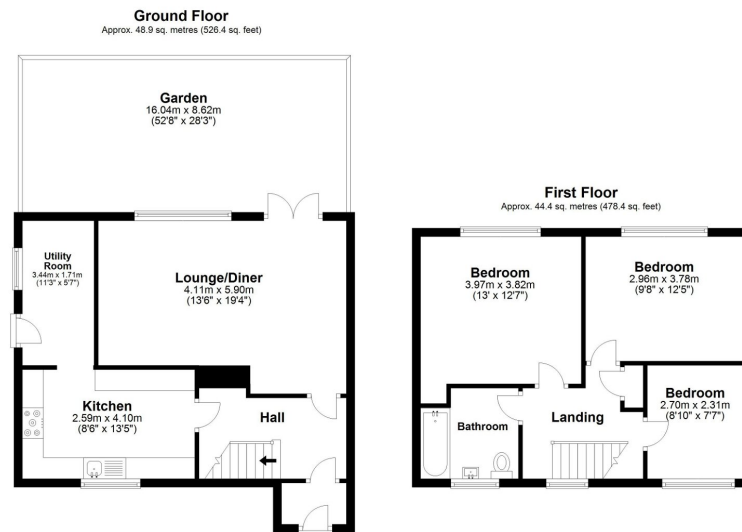
Step inside and you'll find a generous living space that provides ample room for relaxation and entertainment. The large living area is perfect for hosting gatherings or simply unwinding after a long day. Additionally, the good-sized kitchen offers plenty of storage and workspace for the aspiring chef in you.

The property boasts three double bedrooms, providing sufficient space for a growing family or the opportunity to have a home office or guest rooms. The family bathroom caters to the needs of all occupants and ensures convenience and comfort.

Priced extremely competitively, this property represents excellent value for money. Whether you're a first-time buyer looking for your dream home or an investor seeking to expand your portfolio, this is an opportunity not to be missed.

Secure your viewing now to avoid missing out on this fantastic chance to make this property your first home or seize the potential for growth in your investment portfolio. Don't hesitate, as properties like these in this sought-after location are in high demand.





Total area: approx. 93.4 sq. metres (1004.8 sq. feet)
Fleethall Grove

- Amazing 3 double bedroom end of terrace home in popular Grays location
- Large living space for relaxation and entertainment
- Three double bedrooms for a growing family or flexibility
- Priced extremely well, representing great value for money
- Ideal opportunity for first-time buyers or portfolio expansion
- Excellent school, transport links, and amenities nearby
- Good-sized kitchen with ample storage and workspace
- Family bathroom for convenience and comfort
- Highly recommended viewings to avoid missing out
- £365,000-£405,000

