



CARTERREMY
ESTATES

Boscombe Avenue, Grays, RM17

From £415,000-£455,000

4 2 1

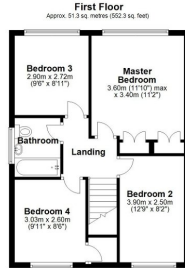
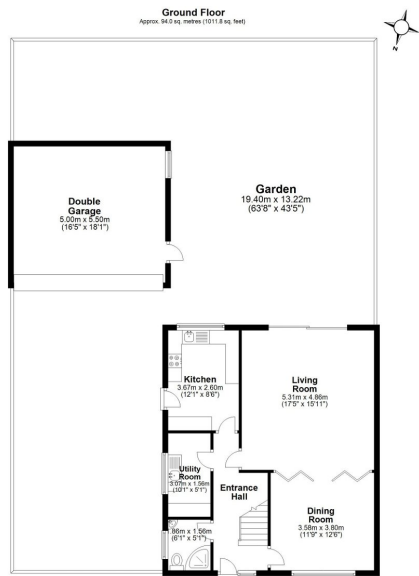


Welcome to this fantastic opportunity for both buyers and investors! Presenting a remarkable 4-bedroom detached chalet bungalow, Guided at £415,000 to £455,000 this home offers immense potential for those looking to add their personal touch and grow into their dream property. The spacious layout allows for potential extensions to the side and rear of the house, and there is even the possibility of building an additional house on the side (subject to planning permission).

Nestled in the heart of Grays, this home benefits from excellent transport links, ensuring easy access to nearby amenities and attractions. Families will appreciate the convenience of having great schools within walking distance, making this location highly desirable.

With the property priced fairly, it is expected to attract significant interest and may not be on the market for long. It is strongly recommended that interested parties reach out today to arrange a viewing. Don't miss out on this exceptional opportunity to secure your dream home. Contact us now to avoid disappointment!





Total area: approx. 145.3 sq. metres (1564.1 sq. feet)
Boscom Avenue

- 4-bedroom detached chalet bungalow with great potential
- Possibility to extend to the side and rear of the property
- Potential for building a house on the side (subject to planning)
- Located in the heart of Grays with excellent transport links
- Walking distance to great schools
- Fairly priced and offers a great investment opportunity
- Act quickly as the property may not be available for long
- Arrange a viewing to fully appreciate the potential and charm of this home
- Avoid the disappointment of missing out on this fantastic opportunity
- £415,000-£455,000

