



CARTERREMY

ESTATES

56 Marlborough Close

Guide Price £575,000-£645,000

🛏️ 4 🚿 2 🚪 2



Nestled in a serene cul-de-sac within the sought-after North Grays locale, this immaculate four-bedroom detached executive-style residence offers a generous layout and impeccable presentation.

Guided at £575,000 to £645,000 Positioned in a quiet and peaceful cul-de-sac in the popular North Grays area. Well-proportioned property featuring an entrance hall, WC, and a large lounge extending to the rear garden.

A modern fitted kitchen with integrated appliances and a feature island enhances the culinary experience.

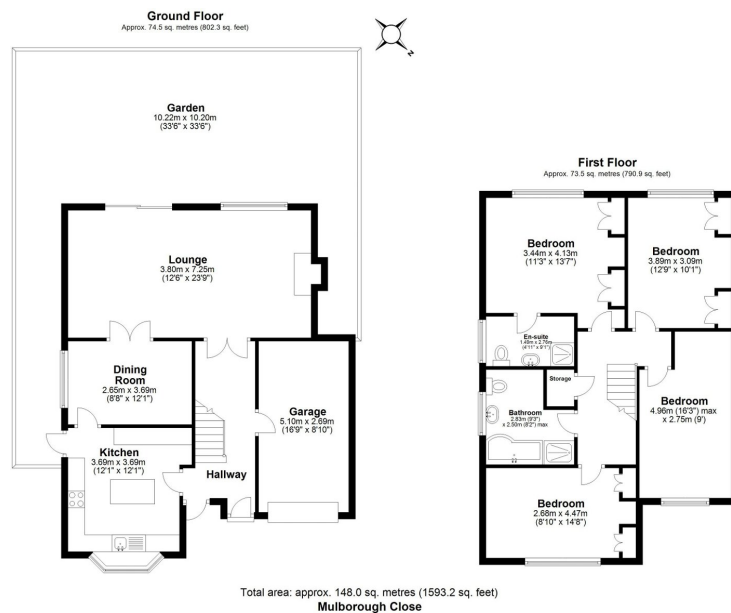
Dedicated dining room for formal gatherings and entertaining.

Four good-sized bedrooms on the first floor, complemented by a four-piece white family bathroom suite.

The master bedroom boasts the luxury of an en-suite shower room for added convenience. The pleasant rear garden includes a raised decked area and a meticulously maintained lawn. A garage and off-street parking ensure ease and convenience for residents.

Well-presented throughout, showcasing a harmonious blend of style and functionality. An internal viewing is highly recommended to fully appreciate the elegance and comfort offered by this executive-style family home.





- Immaculate four-bedroom executive-style home in North Grays
- Spacious interiors with a well-designed entrance hall, WC, and large rear lounge.
- Dedicated dining room for formal gatherings and entertaining
- Luxurious master suite with an en-suite shower room.
- Garage and off-street parking for convenience
- Serene cul-de-sac location, offering tranquility and privacy
- Modern fitted kitchen with integrated appliances and a feature island
- Four good-sized bedrooms on the first floor with a four-piece family bathroom suite
- Pleasant rear garden featuring a raised decked area and a well-maintained lawn
- Impeccable presentation throughout, inviting internal viewing to fully appreciate the elegance and comfort of this executive-style family home

