



284 Wolverhampton Road, Oldbury, B68 0TF

Offers In The Region Of £630,000



5



4



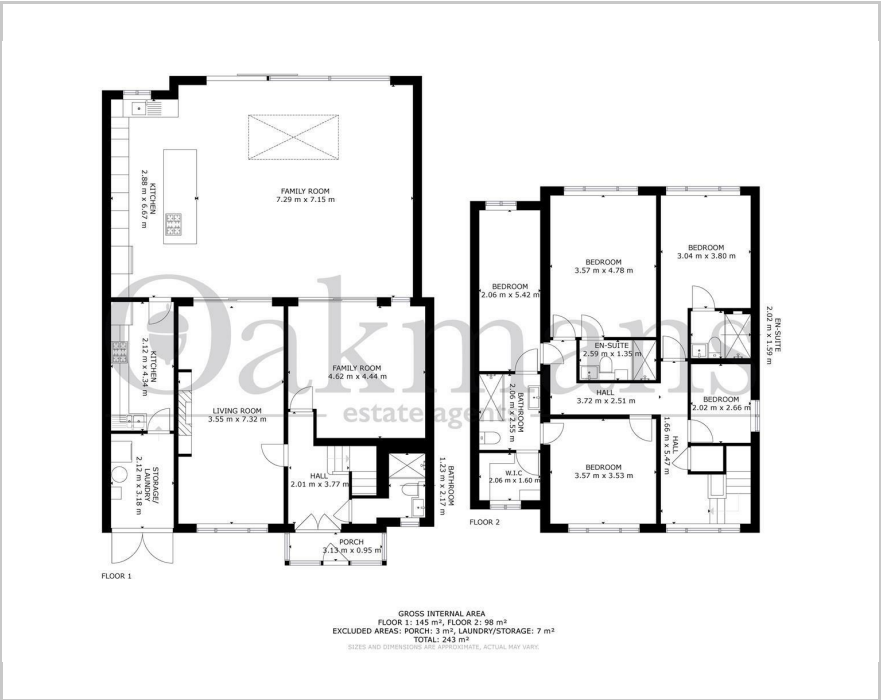
3



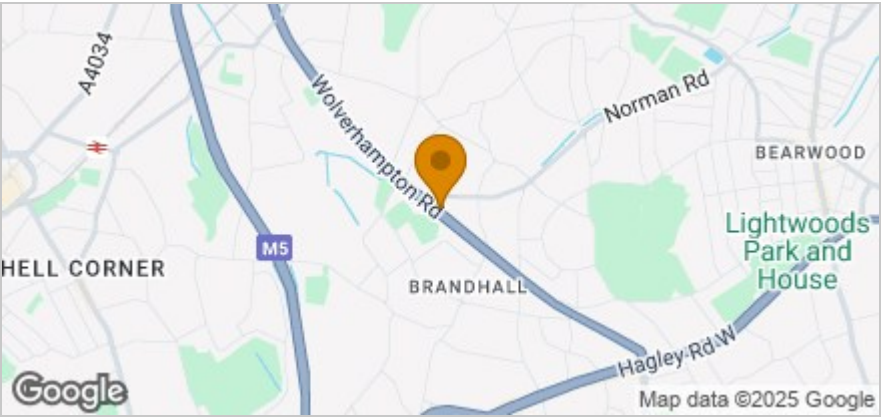
C



Floor Plan



Area Map



These particulars, whilst believed to be accurate are set out as a general outline only for guidance and do not constitute any part of an offer or contract. Intending purchasers should not rely on them as statements of representation of fact, but must satisfy themselves by inspection or otherwise as to their accuracy. No person in this firms employment has the authority to make or give any representation or warranty in respect of the property.

99 High Street, Birmingham, B17 9NR  
Tel: 01214682525 Email: [info@oakmans.co.uk](mailto:info@oakmans.co.uk) [www.oakmans.co.uk](http://www.oakmans.co.uk)

Accommodation



Viewing

Please contact our Harborne Office on 01214682525 if you wish to arrange a viewing appointment for this property or require further information.

Energy Efficiency Graph

