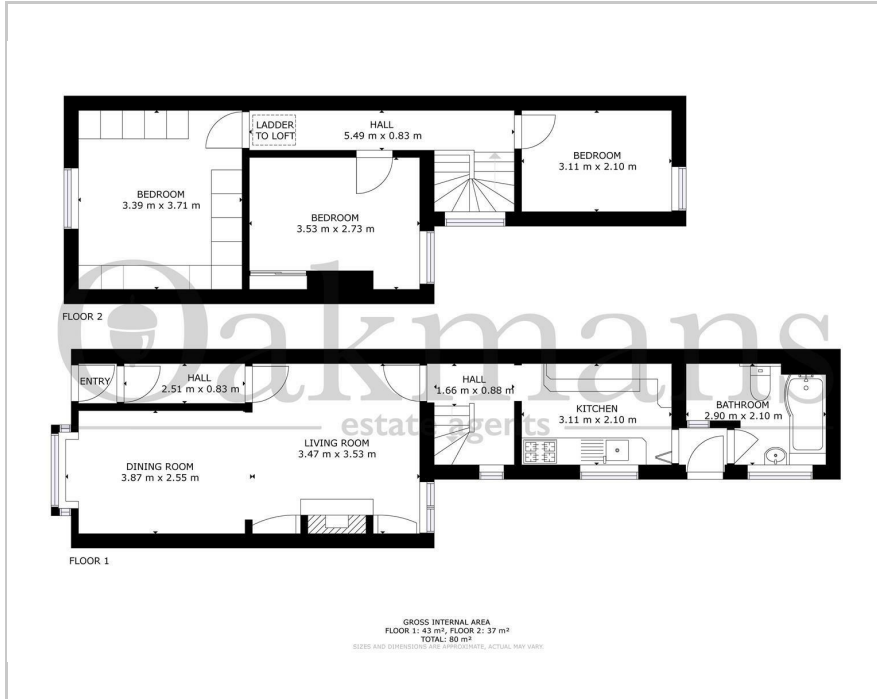




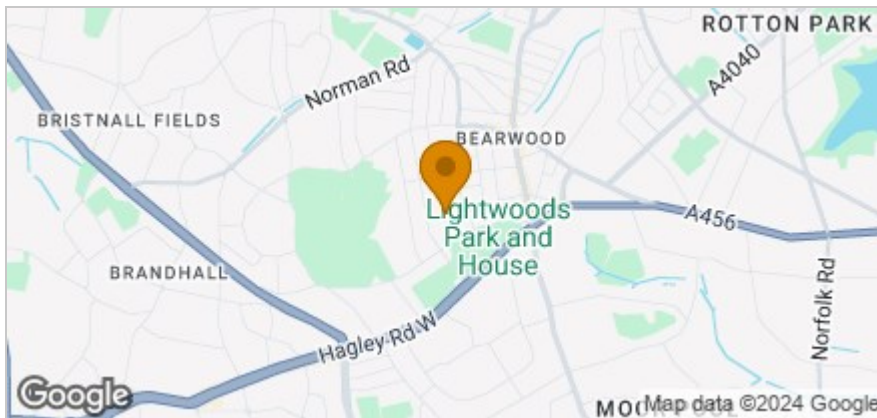
63 Park Road, Smethwick, B67 5HP
Offers In The Region Of £260,000



Floor Plan



Area Map



Accommodation

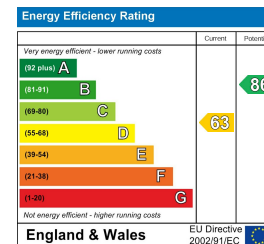
- NO UPWARD CHAIN
- MODERN BATHROOM
- WALKING DISTANCE TO WARLEY WOODS
- NEAR AMENITIES AND TRANSPORT LINKS
- CALL OAKMANS TODAY!



Viewing

Please contact our Harborne Office on 01214682525 if you wish to arrange a viewing appointment for this property or require further information.

Energy Efficiency Graph



These particulars, whilst believed to be accurate are set out as a general outline only for guidance and do not constitute any part of an offer or contract. Intending purchasers should not rely on them as statements of representation of fact, but must satisfy themselves by inspection or otherwise as to their accuracy. No person in this firm's employment has the authority to make or give any representation or warranty in respect of the property.

99 High Street, Birmingham, B17 9NR

Tel: 01214682525 Email: info@oakmans.co.uk www.oakmans.co.uk