



2 Westfield Road, Birmingham, B15 3XD  
Offers In The Region Of £184,000



2



1

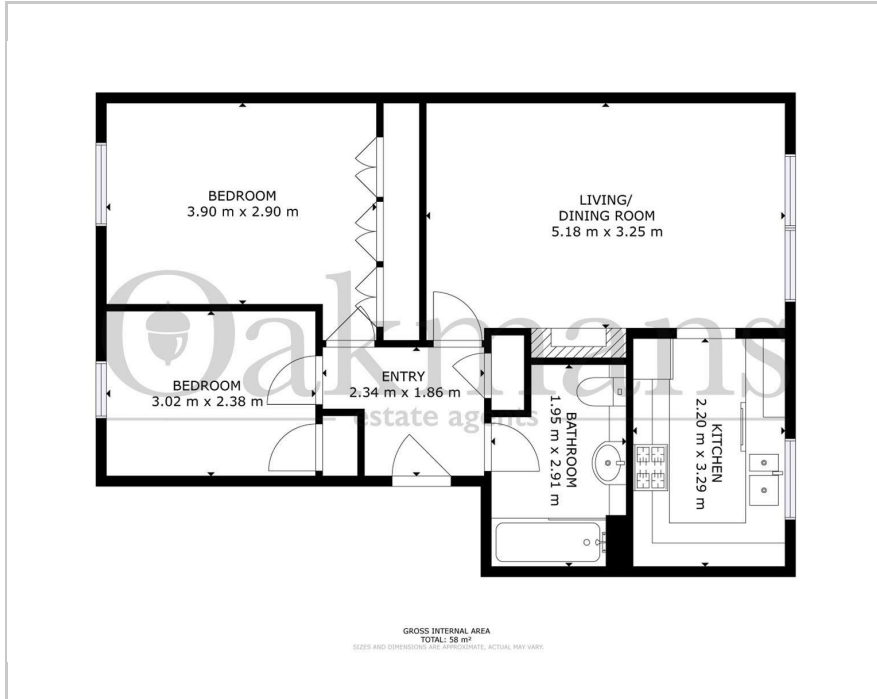


1

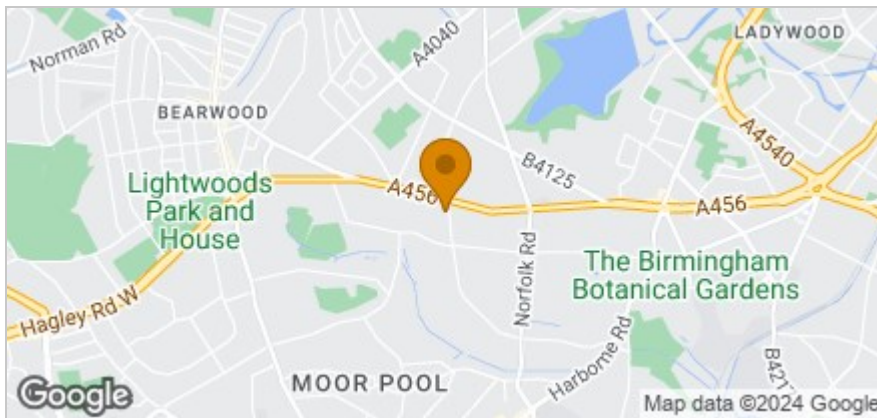




## Floor Plan



## Area Map



## Accommodation

- NO UPWARD CHAIN
- TWO DOUBLE BEDROOMS
- VIEWINGS AVAILABLE NOW
- AMENITIES AND TRANSPORT LINKS NEARBY
- CALL OAKMANS TODAY!



## Viewing

Please contact our Harborne Office on 01214682525 if you wish to arrange a viewing appointment for this property or require further information.

## Energy Efficiency Graph

Energy Efficiency Rating		Current	Potential
Very energy efficient - lower running costs			
(92 plus)	A		
(81-91)	B		
(69-80)	C		
(55-68)	D		
(39-54)	E		
(21-38)	F		
(1-20)	G		
Not energy efficient - higher running costs			
England & Wales		EU Directive 2002/91/EC	

These particulars, whilst believed to be accurate are set out as a general outline only for guidance and do not constitute any part of an offer or contract. Intending purchasers should not rely on them as statements of representation of fact, but must satisfy themselves by inspection or otherwise as to their accuracy. No person in this firm's employment has the authority to make or give any representation or warranty in respect of the property.