



91 Heathy Rise, Birmingham, B32 3UD
Offers In The Region Of £300,000



3



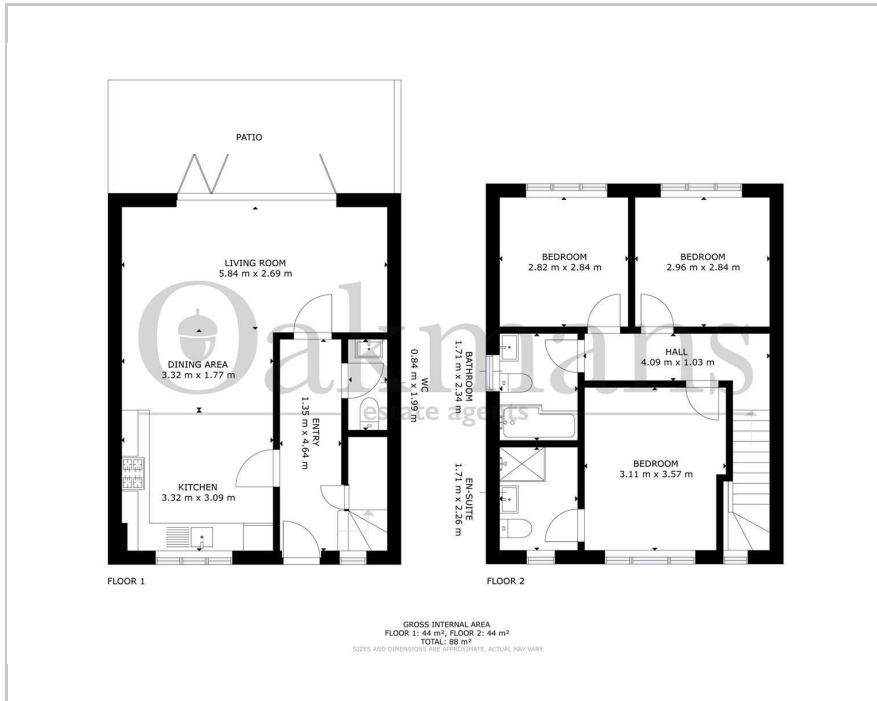
2



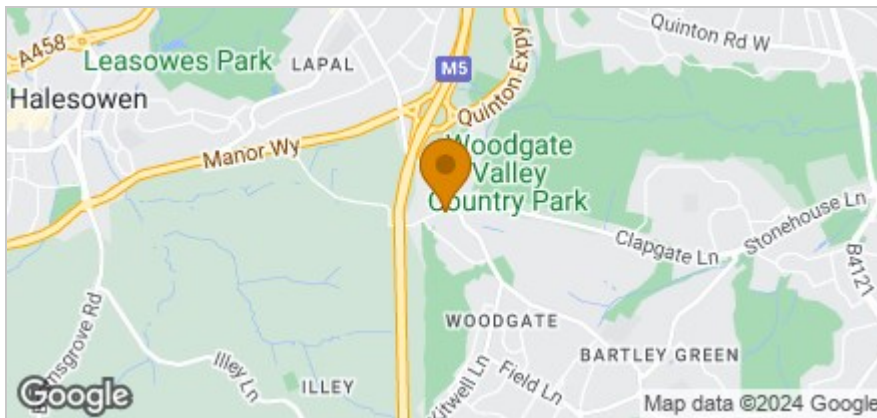
1



Floor Plan



Area Map



Accommodation

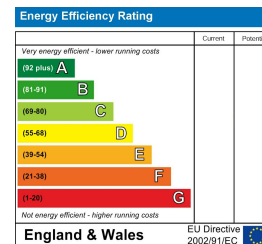
- NEW BUILD PROPERTY
- HIGH QUALITY APPLIANCES
- FEATURE WINDOW TO FRONT
- OPEN PLAN LIVING SPACE
- AMPLE PARKING TO FRONT
- CALL OAKMANS TODAY!



Viewing

Please contact our Harborne Office on 01214682525 if you wish to arrange a viewing appointment for this property or require further information.

Energy Efficiency Graph



These particulars, whilst believed to be accurate are set out as a general outline only for guidance and do not constitute any part of an offer or contract. Intending purchasers should not rely on them as statements of representation of fact, but must satisfy themselves by inspection or otherwise as to their accuracy. No person in this firm's employment has the authority to make or give any representation or warranty in respect of the property.