



31 Cricketers Grove, Birmingham, B17 8BF

Offers Over £775,000



4



2

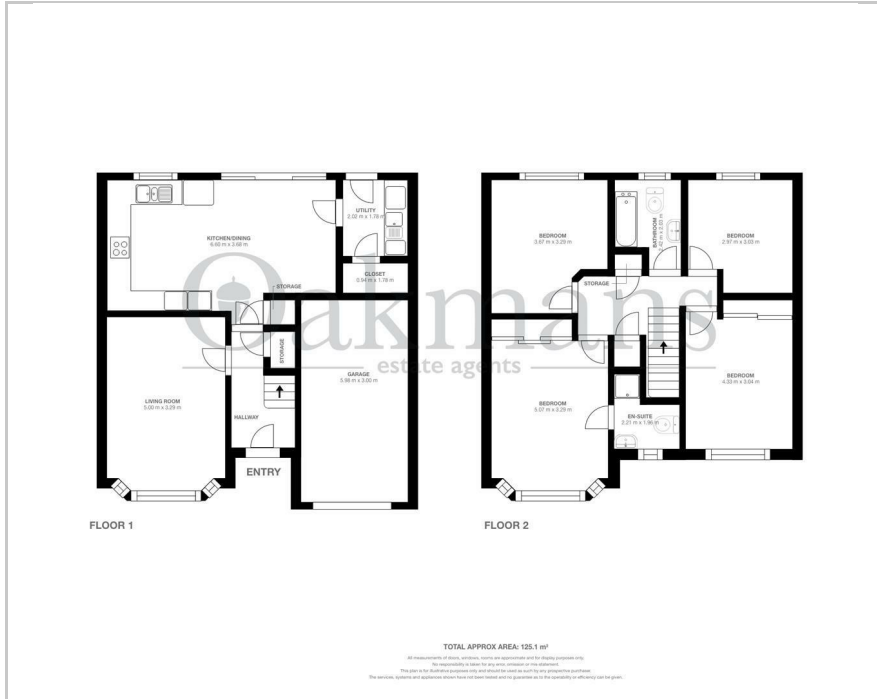


1

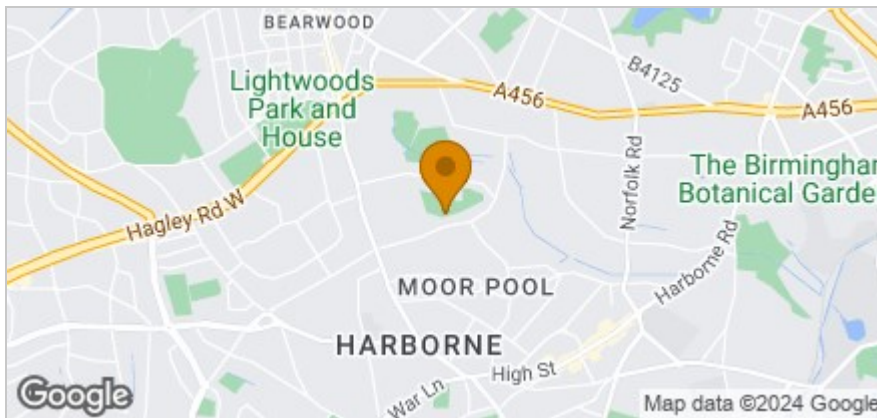


B

Floor Plan



Area Map



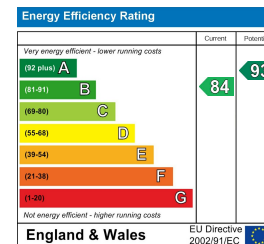
Accommodation

- Executive Detached Family Residence
- Desirable Modern Development in Knightlow Park, Harborne
- High Specification Fixtures and Fittings
- Four Bedrooms
- Beautiful Family Bathroom and En-Suite Shower Room
- NHBC Warranty Until 2028
- Garage and Driveway for Two Cars with EV Charging Point
- Smart Interconnected Home including Nest Thermostat, Doorbell, and Fire Alarm
- EPC Rating – B
- Call Oakmans Today To Arrange Your Viewing!

Viewing

Please contact our Harborne Office on 01214682525 if you wish to arrange a viewing appointment for this property or require further information.

Energy Efficiency Graph



These particulars, whilst believed to be accurate are set out as a general outline only for guidance and do not constitute any part of an offer or contract. Intending purchasers should not rely on them as statements of representation of fact, but must satisfy themselves by inspection or otherwise as to their accuracy. No person in this firm's employment has the authority to make or give any representation or warranty in respect of the property.