

## Wroxham Road, London, Greater London, SE28 8NB

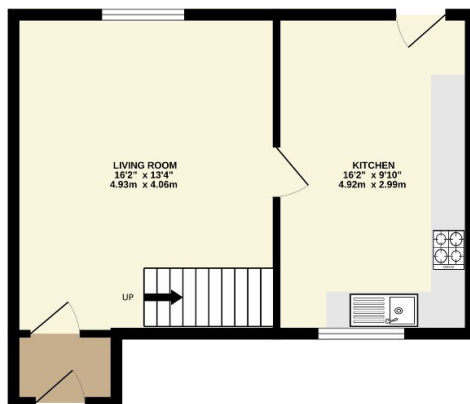
Guide Price £375,000

3 1 1

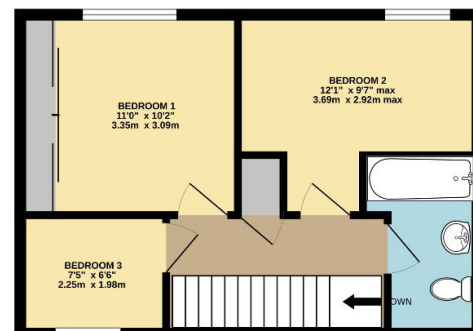


- Generous Three Bedroom End of Terrace House
- Two Double Bedrooms, One Single
- Separate Fully Fitted Kitchen
- Driveway & Off Street Parking
- Close To Excellent Transport Links And Amenities
- Private Front and Large Rear Garden
- Flooded with Natural Light
- Perfect First Time Purchase

GROUND FLOOR



1ST FLOOR



TOTAL FLOOR AREA: 797sq.ft. (74.0 sq.m.) approx.

Whilst every attempt has been made to ensure the accuracy of the floorplan contained here, measurements of doors, windows, rooms and any other items are approximate and no responsibility is taken for any error, omission or mis-statement. This plan is for illustrative purposes only and should be used as such by any prospective purchaser. The services, systems and appliances shown have not been tested and no guarantee as to their operability or efficiency can be given.  
Made with Metropix ©2024

This well-proportioned freehold end-of-terrace house offers three bedrooms and both private front and rear gardens, adding off street parking, nestled in a peaceful cul-de-sac in North Thamesmead. The property is conveniently located near local amenities, providing easy access to everyday essentials.