



4 Bedrooms



2 Bath/Shower Room + WC



3 Reception Rooms



Garage



110ft Garden



EPC Band D

Council Tax

Band F: £3,366.11 (2025/26)

Local Authority
Dacorum Council



Bridgewater Road, Berkhamsted, Hertfordshire, HP4 1HN
Guide Price £1,250,000 Freehold

Bridgewater Road, Berkhamsted HP4 1HN

This four bedroom detached house is located close to the centre of Berkhamsted and is just a short walk to the railway station, sports clubs and the High Street. The house has three reception rooms, a garage and no upper chain.

- Four bedroom detached home
- Located close to the centre of Berkhamsted
- Three reception rooms plus conservatory
- Offered chain free
- 110ft Rear garden
- Garage and driveway
- Potential to extend (Subject to planning consent)

Description

This four bedroom, detached, family home is now available and offers excellent living accommodation arranged over two floors. The versatile living spaces include a living room which leads out to the conservatory, a great sized office/family room and a dining room which overlooks the garden. The kitchen has a door leading to a covered way where there is access to the utility room and the garage.

The first-floor principal bedroom enjoys a rear aspect and has an ensuite shower room. There are three further bedrooms and a family bathroom.

The rear garden is approximately 110ft (33m) and is mainly laid to lawn with mature trees, a patio for summer dining and a shed for garden storage.

Location

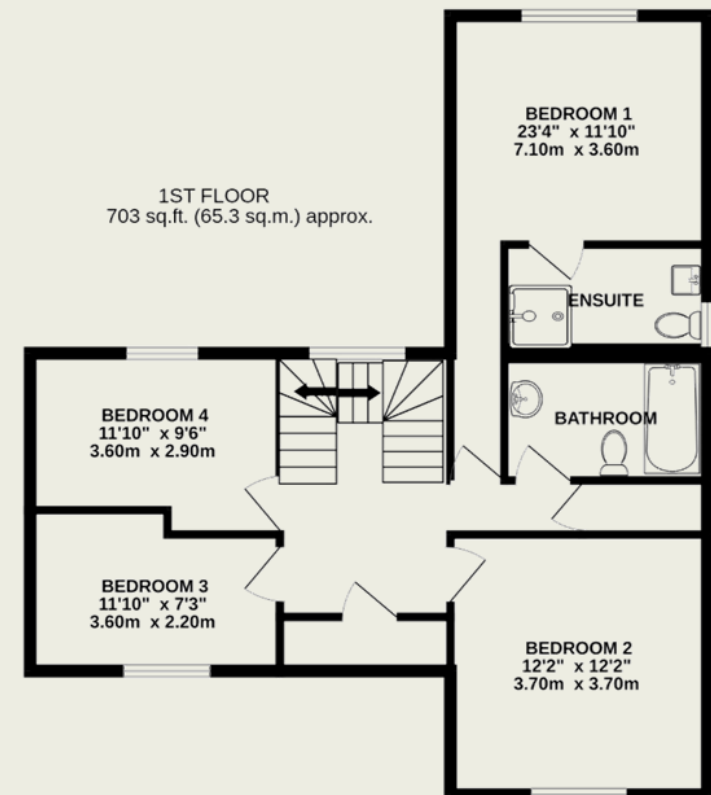
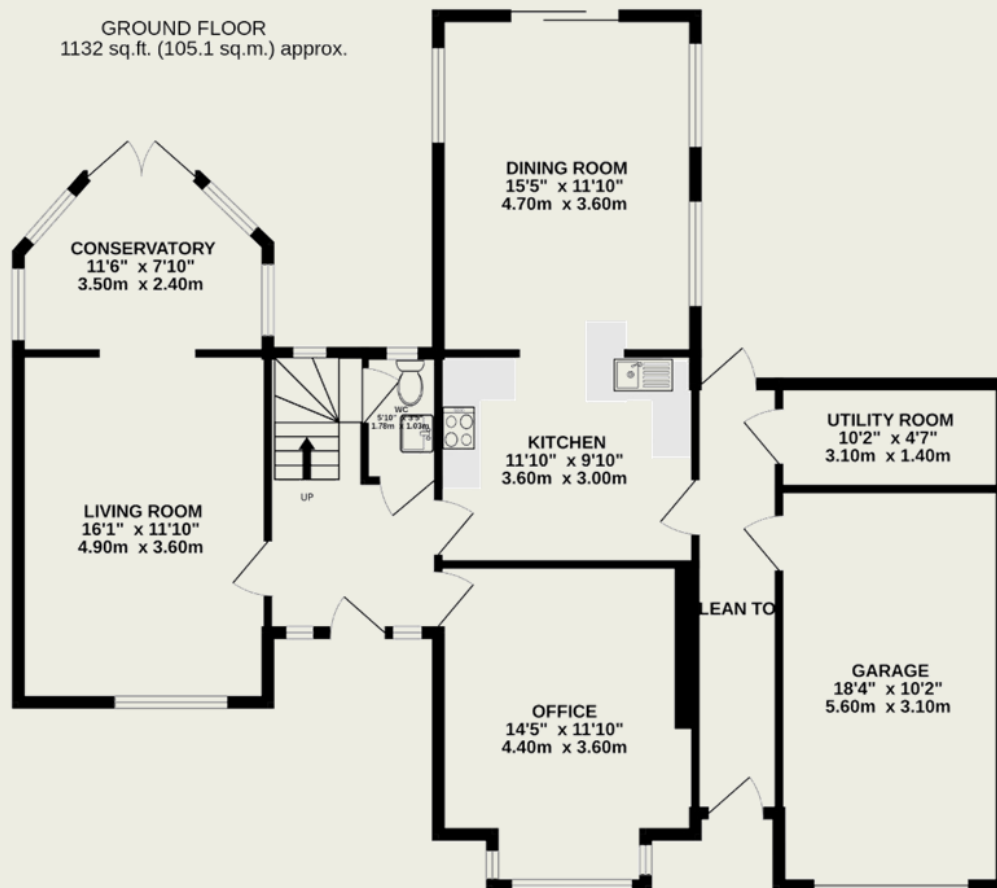
Bridgewater Road is within walking distance of the town centre and mainline station that provides a good rail service into Euston London (approximately 35 mins). An excellent primary school is close-by as are the renowned secondary schools in the area. Very well run sports clubs are nearby which include Berkhamsted Lawn Tennis Club and Berkhamsted Football Club, cricket club and a bowls club.





Important Information

These particulars do not constitute an offer or contract in whole or part. The statements contained herein are made without responsibility on the part of Ashtons or the vendors and they cannot be relied upon as representatives of fact. In respect of floor plans, these are for illustrative purposes only. The measurement and position of each element is approximate and must be viewed as such. Intending purchasers should therefore satisfy themselves by inspection or otherwise as to their correctness. The vendors do not make or give, and neither Ashtons nor any person in their employment has any authority to make or give, any representation or warranty whatsoever in relation to this property. We offer a wide range of services through third party providers including solicitors, surveyors, removal firms, mortgage providers and EPC suppliers. We receive additional payments for administering suppliers quoting software and making referrals. You are not under any obligations to use these services and it is your discretion whether you choose to deal with these parties or your own preferred supplier. You should be aware the average payment we received in 2021 equated to £48.36 per referral.



TOTAL FLOOR AREA : 1641sq.ft. (152.5 sq.m.) approx.

This floorplan is for illustrative purposes only. The measurement and position of each element is approximate and must be viewed as such.