


The Rex, High Street,  
Berkhamsted,  
Hertfordshire,  
HP4 2BT

 2 Bedrooms

 2 Bath/Shower Rooms

 1 Reception Room

 Allocated Parking

 EPC Band B

Council Tax  
Band: E £2,848.24 (25/26)

Deposit £1,673.07  
Holding Deposit £334.61

£1,450 PCM

 **ashtons**  
for life's great moves



A beautifully presented large two bedroom two bathroom apartment, with a secure undercover parking space, lift access, situated in the sought after Art Deco Rex development within the heart of Berkhamsted.  
Available Now

### Description

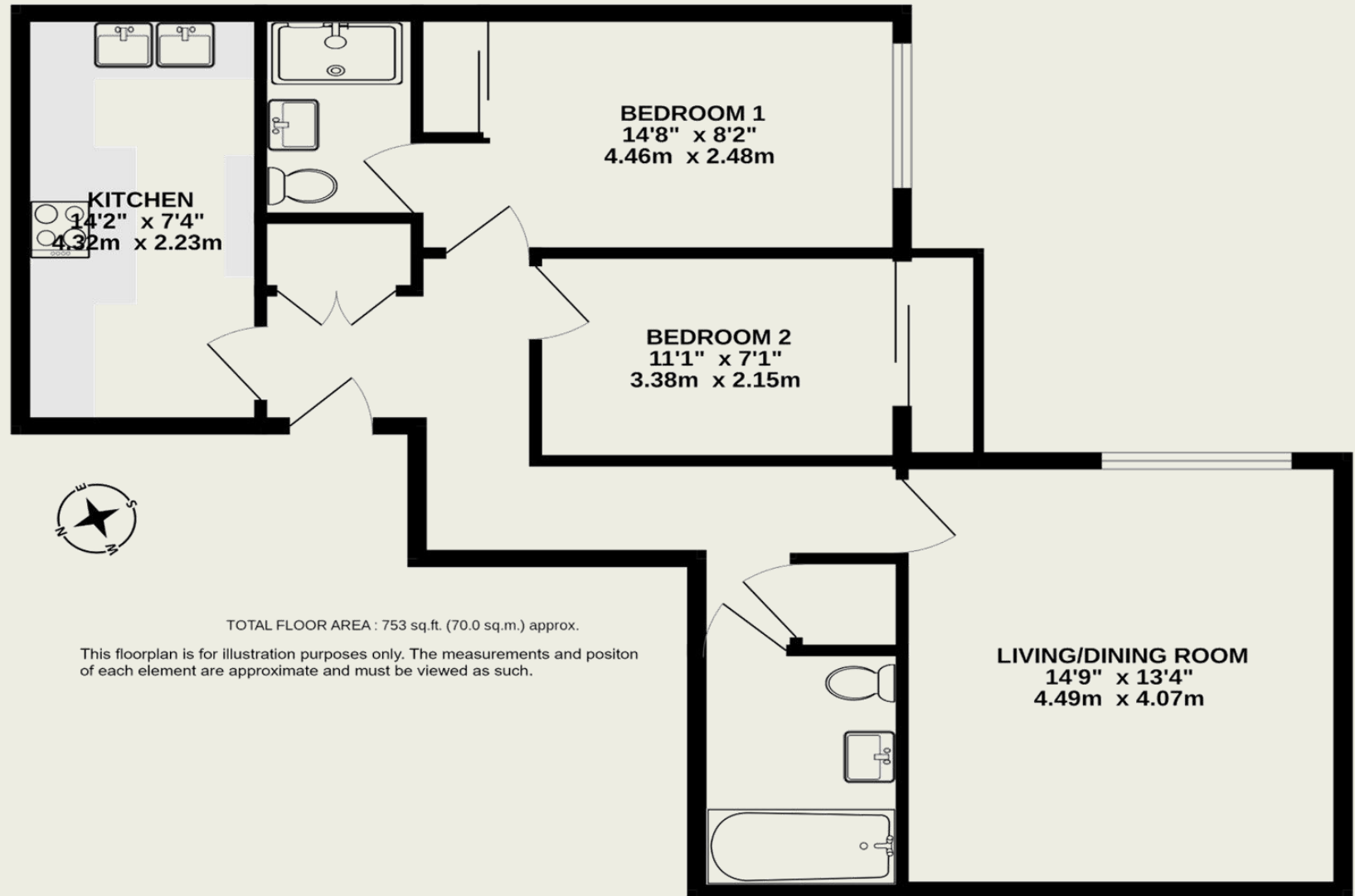
The apartment is situated within this refurbished 1930's Art Deco Cinema Complex, close to the High Street amenities, including restaurants, bars, coffee shops and mainline railway station.

Accommodation includes: modern kitchen with built in fridge/freezer, dishwasher & washing machine. Two bedrooms one with ensuite shower and built in double wardrobes and the second bedroom with a Juliette balcony. A separate hallways leads to the a modern family bathroom and hallway storage cupboard and then onto the separate living and dining room.

Ideally suited for working single or professional couples.

### Location

Berkhamsted offers a wide variety of both state and private schools with numerous recreational facilities along with an abundance of cafes, shops and restaurants.



These particulars do not constitute an offer or contract in whole or part. The statements contained herein are made without responsibility on the part of Ashtons or the vendors and they cannot be relied upon as representatives of fact. In respect of floor plans, these are for illustrative purposes only. The measurement and position of each element is approximate and must be viewed as such. Intending purchasers should therefore satisfy themselves by inspection or otherwise as to their correctness. The vendors do not make or give, and neither Ashtons nor any person in their employment has any authority to make or give, any representation or warranty whatsoever in relation to this property.

