



4 Bedrooms



2 Bath/Shower Room



2 Reception Rooms



Driveway



Private Garden



EPC Band C

Council Tax

Band G

- £4,093.63 24/25

Local Authority

Chiltern



Sycamore Dene, Chesham, HP5 3JT
Asking Price £1,350,000.

Sycamore Dene, Chesham, HP5 3JT

A four bedroom architect designed detached house nestled quietly in an idyllic cul-de-sac on the outskirts of Chesham.

- 🏡 Detached
- 🏡 Parking for multiple cars
- 🏡 Architect designed
- 🏡 Large windows
- 🏡 Woodland views
- 🏡 Lovely walks close by
- 🏡 Four bedrooms

Description

Designed in 1962 by the architect Hans Werner Rosenthal, this wonderfully characterful four-bedroom home is set in over 1/3 of an acre of landscaped gardens and woodlands on the quiet edge of Chesham. The house has generous living spaces and extends to around 2,402sq ft including the terrace 2,636sq ft, with expansive glazing bringing an excellent quality of light across its two storeys. The modern and bespoke fitted kitchen is open to the dining area and this leads wonderfully into the living room which all have amazing views over the garden and woodland beyond. A feature much loved by the current owners has been the roof-terrace, a pleasant space to enjoy morning coffees and alfresco dining in the coming warmer months. Bedrooms one and four are on this floor as is a shower room.

On the ground floor is a spacious sitting room and study area. This central room well befits as a second living space, home office, gym, or an additional bedroom, with garden views. Two double bedrooms lie off an arterial corridor, each beautifully light, quiet and with direct garden access. A further shower room benefits this floor. and the layout also lends itself to being a separate annex/living space for family members.

Externally the house has a wonderful, private rear garden with a wooded back-drop and the block paved patio is a great place for entertaining, ball games and can provide additional parking if necessary.

Location

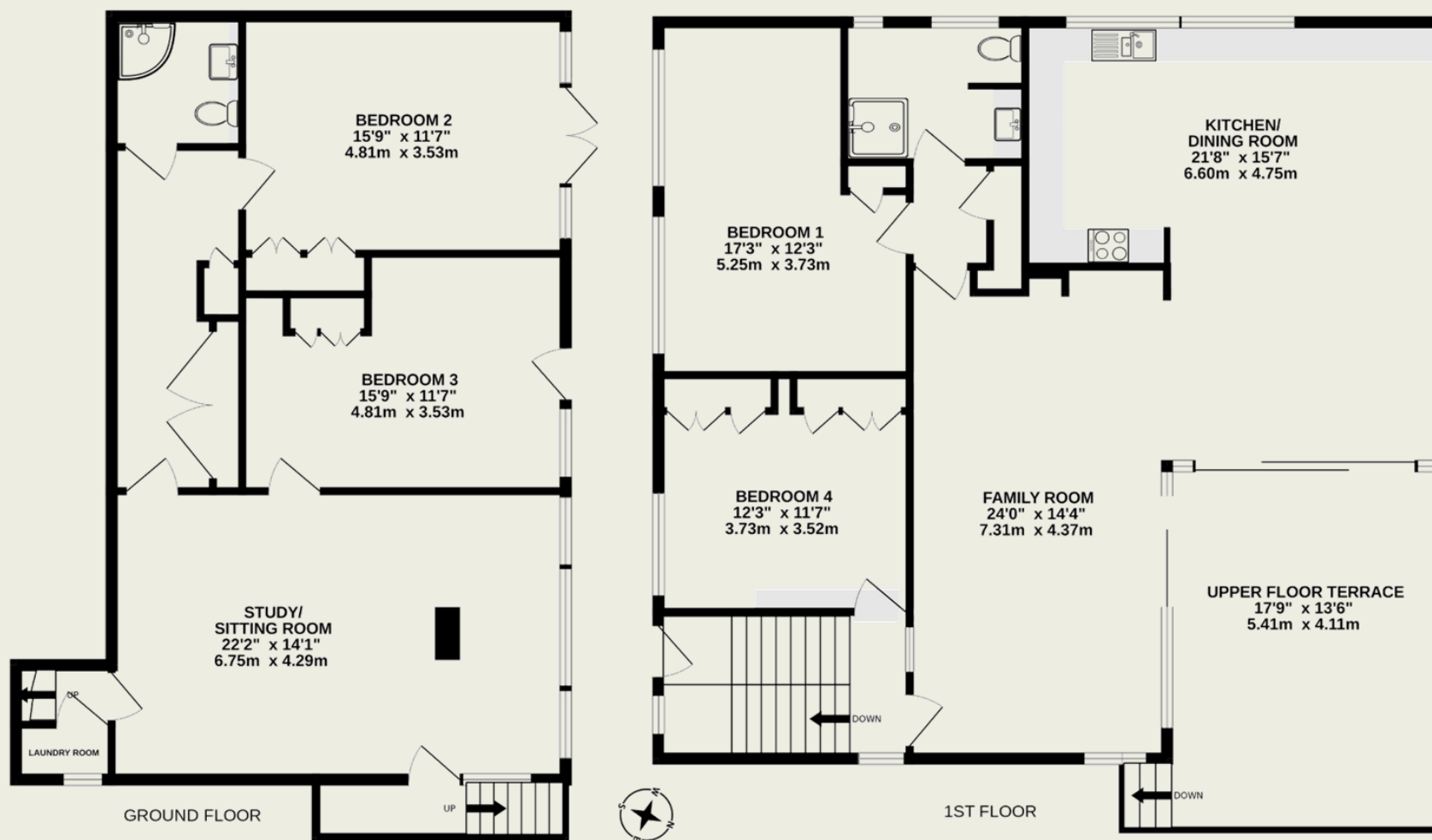
Surrounded by the green expanses of the Chiltern Hills Area of Natural Beauty, Sycamore Dene is a quiet spot just a 20-minute walk from the heart of Chesham. Hockeridge and Pancake Woods are both a five-minute drive away, with plenty of other hiking trails in the surrounding area. Walking distance to Chesham Grammar School.





Important Information

These particulars do not constitute an offer or contract in whole or part. The statements contained herein are made without responsibility on the part of Ashtons or the vendors and they cannot be relied upon as representatives of fact. In respect of floor plans, these are for illustrative purposes only. The measurement and position of each element is approximate and must be viewed as such. Intending purchasers should therefore satisfy themselves by inspection or otherwise as to their correctness. The vendors do not make or give, and neither Ashtons nor any person in their employment has any authority to make or give, any representation or warranty whatsoever in relation to this property. We offer a wide range of services through third party providers including solicitors, surveyors, removal firms, mortgage providers and EPC suppliers. We receive additional payments for administering suppliers quoting software and making referrals. You are not under any obligations to use these services and it is your discretion whether you choose to deal with these parties or your own preferred supplier. You should be aware the average payment we received in 2021 equated to £48.36 per referral.



TOTAL FLOOR AREA : 2402sq.ft. (223.2 sq.m.) approx.

This floorplan is for illustration purposes only. The measurements and position of each element are approximate and must be viewed as such.