

St. Johns Well Lane
Berkhamsted
HP4 1JQ

 2 Bedrooms

 1 Bath/Shower Room

 1 Reception Room

 Allocated Parking Space

 Communal

 EPC Band C

Council Tax - Dacorum
Band: C – £2,071.45 (2025/26)
Lease 999 years from 29/09/1981
Service Charge: TBC

Guide Price
£325,000 Leasehold

 **ashtons**
for life's great moves



This spacious and bright two double bedroom apartment is located in central Berkhamsted and benefits from Share of Freehold with a long lease and an allocated parking space.

Description

This beautifully presented first-floor apartment offers two double bedrooms and is ideally situated in Berkhamsted town, just a short walk from shops, restaurants, coffee shops, and the mainline train station.

The property opens into a generous entrance hallway leading to the main hallway, which provides ample storage. There is a separate living room and a well presented kitchen all benefiting from large south facing windows.

There are two spacious double bedrooms and a family bathroom with toilet, basin and a bath with shower over.

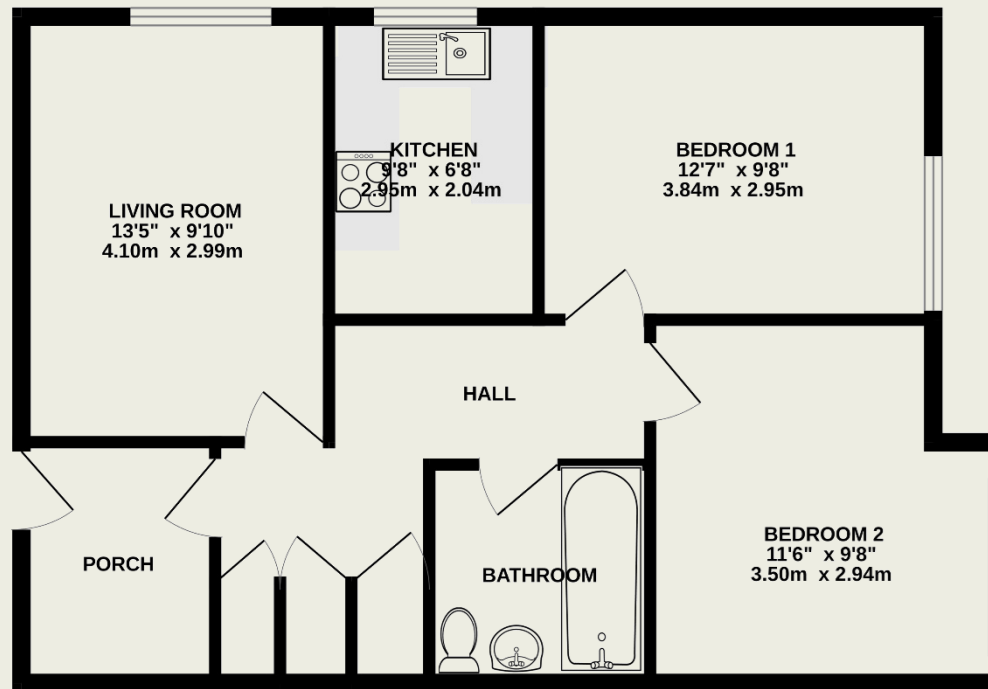
This property benefits from being Share of Freehold with a long lease of 999 years from 1981.

Location

Berkhamsted is a busy market town, located just 30 minutes from London Euston by train, highly desirable for commuters, with excellent transport links by road and rail.

The property is only a short walk from the mainline station and the towns local amenities including, shops, restaurants and pubs.

1ST FLOOR
596 sq.ft. (55.4 sq.m.) approx.



TOTAL FLOOR AREA : 596 sq.ft. (55.4 sq.m.) approx.

Whilst every attempt has been made to ensure the accuracy of the floorplan contained here, measurements of doors, windows, rooms and any other items are approximate and no responsibility is taken for any error, omission or mis-statement. This plan is for illustrative purposes only and should be used as such by any prospective purchaser. The services, systems and appliances shown have not been tested and no guarantee as to their operability or efficiency can be given.
Made with Metropix ©2025

Important Information

These particulars do not constitute an offer or contract in whole or part. The statements contained herein are made without responsibility on the part of Ashtons or the vendors and they cannot be relied upon as representatives of fact. In respect of floor plans, these are for illustrative purposes only. The measurement and position of each element is approximate and must be viewed as such. Intending purchasers should therefore satisfy themselves by inspection or otherwise as to their correctness. The vendors do not make or give, and neither Ashtons nor any person in their employment has any authority to make or give, any representation or warranty whatsoever in relation to this property.

We offer a wide range of services through third-party providers including solicitors, surveyors, removal firms, mortgage providers and EPC suppliers. We receive additional payments for administering suppliers quoting software and making referrals. You are not under any obligation to use these services and it is your discretion whether you choose to deal with these parties or your own preferred supplier. You should be aware the average payment we received in 2021 equated to £48.36 per referral.