










Puttenham Court, Puttenham, Tring, Hertfordshire HP23 4PY | Guide Price £1,175,000 Freehold

 3 Bedrooms  3 Bath/Shower Rooms  1 Reception Room  Garage  Garden with views

 EPC Band C  Council Band: G – £3,875.86 (2025/26)  Dacorum Council

ashtons.co.uk

The 
Collection
TOWN | COUNTRY | EQUESTRIAN

Puttenham Court, Puttenham, Tring

A very special three bedroom home offering large, bright rooms, a beautiful garden and stunning countryside views.

- Beautiful barn conversion
- Private courtyard development
- Large garden with uninterrupted views
- Two en-suites & family bathroom
- Allocated parking spaces
- Garage and summerhouse
- Within easy reach of excellent amenities and schooling

Description

Originally built in 1852, and later converted to a dwelling in 2002, the Calf Shed is quietly nestled in the village of Puttenham.

The house is immaculately presented and comes complete with a number of beautiful original features and some real wow factors. To the front of the property are two allocated parking spaces and access to the single garage.

The welcoming entrance hall presents access to all of the downstairs rooms, as well as the twin staircases which lead to the first-floor bedrooms. The impressive open-plan kitchen / lounge / diner stretches along the back of the house and offers the most beautiful views across the garden and fields beyond. Two sets of patio doors lead to the garden, where you will find plenty of space to relax. The kitchen also features granite worktops an integrated dishwasher, a butler's sink, a breakfast bar, and ample storage options. There is a door to the utility room, as well as to the dining room / study, with this room having the flexibility to create a fourth bedroom. The huge living room features a beautiful Inglenook fireplace with log burner. It also benefits from two sets of patio doors to the garden, and original 'arrow head' feature windows. A cloakroom completes the downstairs layout.

The left-hand staircase leads to two of the beautiful bedrooms. The master suite is located in the turret, a bedroom of breath taking proportions and much character. Light streams through the three sets of arrow head windows as well as the French doors opening to a Juliette balcony. The en-suite offers a large, walk in shower as well twin sinks and plenty of storage. Bedroom 3 is a large double room with feature beams, in-built wardrobes and much light from Velux windows the front and rear. Adjacent is the beautiful family bathroom with a roll top bath and Victorian style toilet and pedestal sink. Bedroom 2 is accessed via the second staircase from the entrance hall. It also features beams, a seating area, and an en-suite shower room.

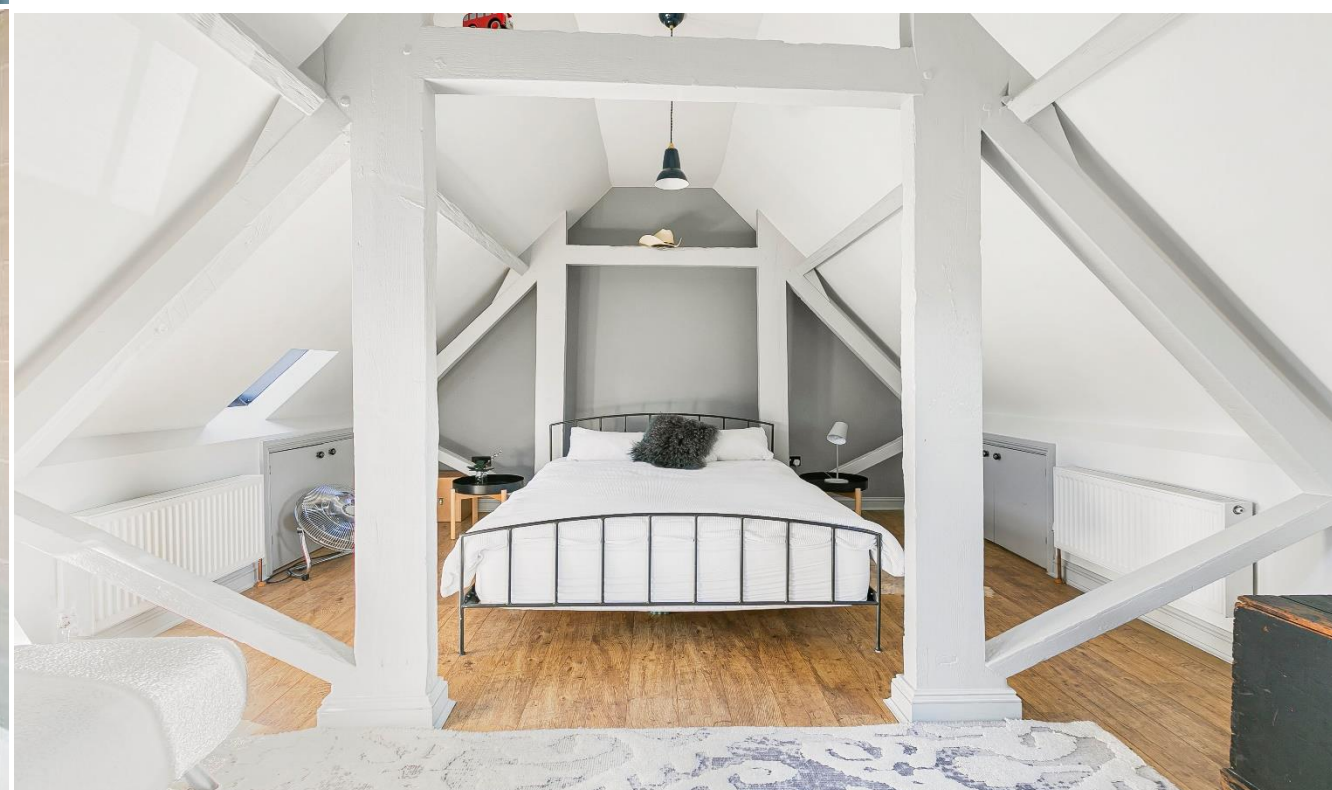
The rear garden is a great size and wraps around the house. It's perfect for the coming Summer's entertaining. There are several patios, a wildflower patch with seating area and two raised beds. The garden also benefits from a modern summer house, which can also be used as an outside office.



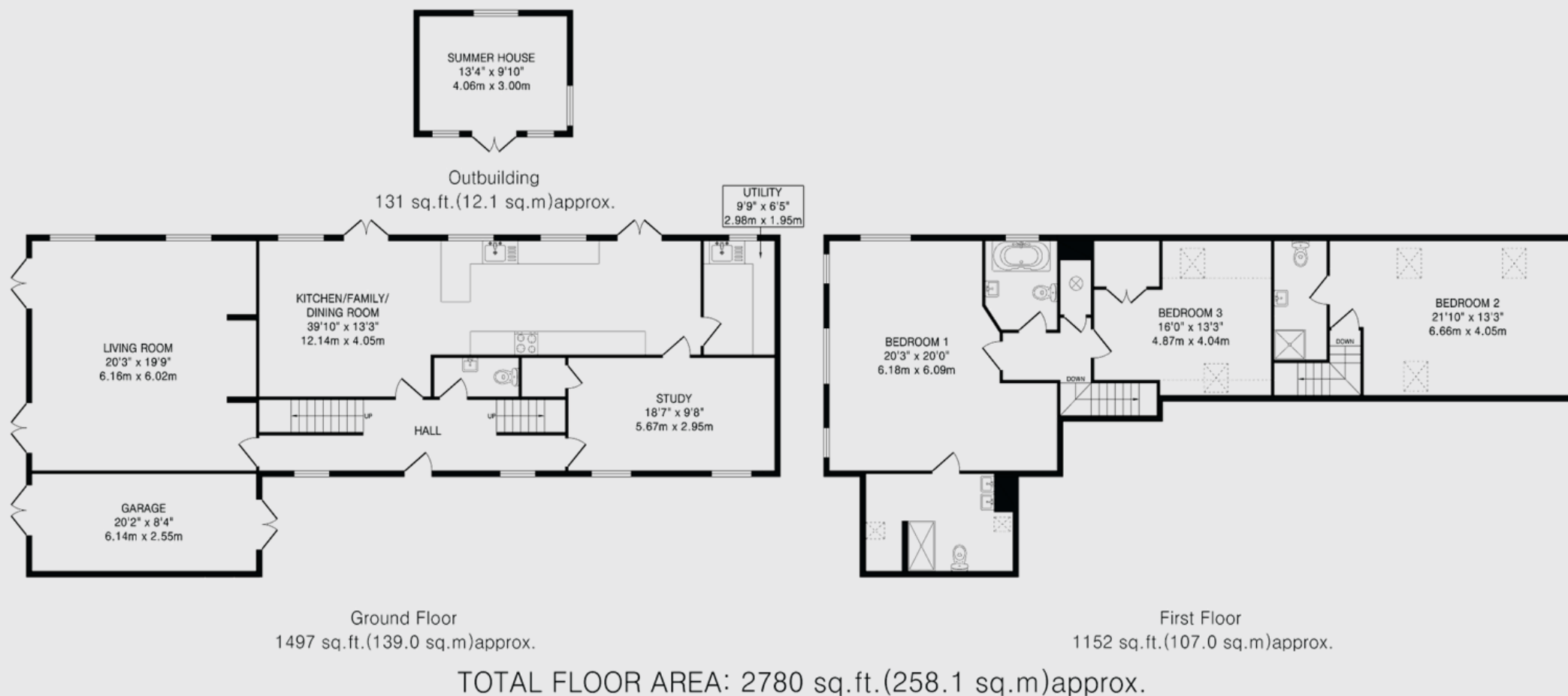
Location

The Village of Puttenham lies 5 miles to the north-west of Tring on the Hertfordshire / Buckinghamshire border, and close to the Aylesbury arm of the Grand Union Canal. Puttenham is in easy reach of the A41 and Cheddington mainline railway station is only 3.5 miles away, with a direct service in to London Euston. Tring is a lovely market town with a number of independent shops, coffee shops and restaurants, as well as parkland and Tring Museum. Long Marston is a mile away with a pre-school, junior school and a pub. Other great school options include Tring, Berkhamsted and the Bucks grammar schools.









IMPORTANT INFORMATION:

These particulars do not constitute an offer or contract in whole or part. The statements contained herein are made without responsibility on the part of Ashtons or the vendors and they cannot be relied upon as representatives of fact. In respect of floor plans, these are for illustrative purposes only. The measurement and position of each element is approximate and must be viewed as such. Intending purchasers should therefore satisfy themselves by inspection or otherwise as to their correctness. The vendors do not make or give, and neither Ashtons nor any person in their employment has any authority to make or give, any representation or warranty whatsoever in relation to this property.

We offer a wide range of services through third party providers including solicitors, surveyors, removal firms, mortgage providers and EPC suppliers. We receive additional payments for administering suppliers quoting software and making referrals. You are not under any obligations to use these services and it is your discretion whether you choose to deal with these parties or your own preferred supplier. You should be aware the average payment we received in 2021 equated to £48.36 per referral.

Contact one of our property experts today:

📞 01442 862533 ✉ thecollection@ashtons.co.uk 💻 ashtons.co.uk/the-collection

Berkhamsted | Harpenden | Hitchin | Redbourn | St Albans | Welwyn Garden City

The
Collection
TOWN | COUNTRY | EQUESTRIAN