




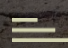





Millfield, Berkhamsted | Guide Price £2,250,000 Freehold

 5 Bedrooms  3 Bath/Shower Rooms  4 Reception Rooms  Driveway  Private Garden

 EPC Band – C  Council Band: G – £3,704.23 24/25  Dacorum

[ashtons.co.uk](https://ashtons.co.uk)

The  
**Collection**  
TOWN | COUNTRY | EQUESTRIAN



# Millfield, Berkhamsted

A stunning five bedroom detached house in Prime-Berkhamsted with an outstanding kitchen/living space with views and a south facing garden. A short walk gets you into the heart of the town, the train station and outstanding schooling.

🗝️	Detached house, 5 beds
🗝️	Modern kitchen, open plan
🗝️	Spectacular views
🗝️	Versatile studio space
🗝️	South facing garden
🗝️	Three bathrooms
🗝️	Walk-in wardrobes

## Description

A beautifully maintained five-bedroom detached house in excellent condition, located on a sought-after road in Berkhamsted.

Upon entering, you are greeted by a spacious and inviting hall with a convenient coat cupboard and a feature window from the ground floor to the first floor. The property boasts a large, modern kitchen flowing seamlessly into the dining area and seating space offering breathtaking views over Berkhamsted. Sliding doors open to the south-facing garden, enhancing the indoor-outdoor living experience. With a separate living room, dining room, lounge, office, and utility room, this property offers versatile living spaces. The lounge leads to a studio currently used as a Yoga room, with direct access to the garden, making it perfect for relaxation and entertainment.

Upstairs, five bedrooms, three bathrooms, and three walk-in wardrobes cater to comfortable family living, with the master suite featuring a walk-in wardrobe, modern ensuite, and impressive views.

The private rear garden extends to over 60' by 100' with mature hedge surrounds, largely laid to lawn there is an extensive balcony/terrace and raised seating area to take full advantage of the sunny south-westerly aspect. The property is situated on a popular no-through road.





## Location

Located just a short stroll into the heart Berkhamsted and 0.4 miles walk from the train station. Enjoy all the benefits that Berkhamsted has to offer on your doorstep including the Grand Union Canal. The open spaces of Ashridge Estate are close by, as are Berkhamsted Golf Club, Berkhamsted Lawn Tennis Club among others.



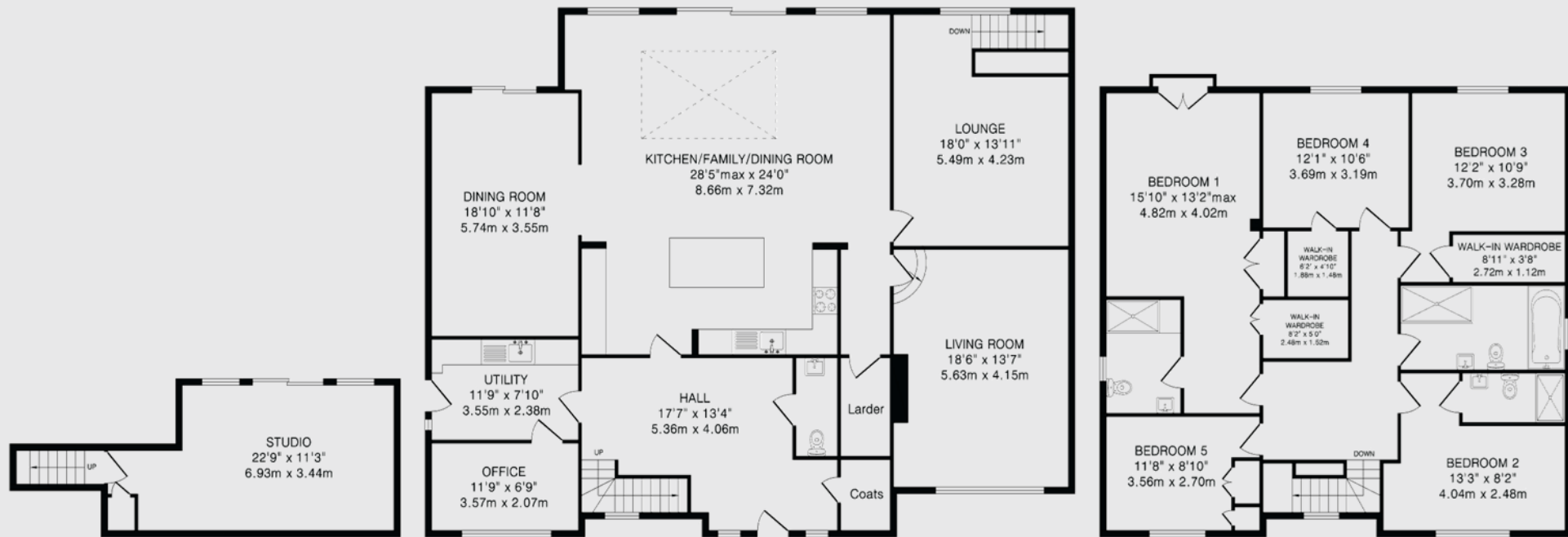












**TOTAL FLOOR AREA: 3373 sq.ft.(313.2 sq.m)approx.**  
This floorplan is for illustration purposes only. The measurements and position of each element are approximate and must be viewed as such.

#### IMPORTANT INFORMATION:

These particulars do not constitute an offer or contract in whole or part. The statements contained herein are made without responsibility on the part of Ashtons or the vendors and they cannot be relied upon as representatives of fact. In respect of floor plans, these are for illustrative purposes only. The measurement and position of each element is approximate and must be viewed as such. Intending purchasers should therefore satisfy themselves by inspection or otherwise as to their correctness. The vendors do not make or give, and neither Ashtons nor any person in their employment has any authority to make or give, any representation or warranty whatsoever in relation to this property.

We offer a wide range of services through third party providers including solicitors, surveyors, removal firms, mortgage providers and EPC suppliers. We receive additional payments for administering suppliers quoting software and making referrals. You are not under any obligations to use these services and it is your discretion whether you choose to deal with these parties or your own preferred supplier. You should be aware the average payment we received in 2021 equated to £48.36 per referral.

Contact one of our property experts today:

📞 01442 862533 ✉️ thecollection@ashtons.co.uk 💻 ashtons.co.uk/the-collection

Berkhamsted | Harpenden | Hitchin | Redbourn | St Albans | Welwyn Garden City

**The Collection**  
TOWN | COUNTRY | EQUESTRIAN