



March House, Two Dells Lane, Ashley Green, HP5 3PN | Freehold

6 Bedrooms 5 Bath/Shower Rooms 4 Reception Rooms Driveway 0.5 Acre Plot

EPC Band B Council Tax: Band: G £3728.78 (2024/25) Buckinghamshire Council

[ashtons.co.uk](https://ashtons.co.uk)

The  
**Collection**  
TOWN | COUNTRY | EQUESTRIAN



# March House, Two Dells Lane, Ashley Green

This handsome six-bedroom detached house occupies a commanding position on Ashley Green and enjoys a plot exceeding 0.5 acres. Beautifully presented throughout the house has a separate annex, strong eco credentials and magnificent country views.

🔑	Beautifully Presented five-bedroom Detached House
🔑	Four Versatile Reception Rooms
🔑	Modern and Well-Appointed Kitchen / Diner
🔑	One-Bedroom Annex with an En-Suite and Open-Plan Living Room
🔑	Expansive Rear Garden with Built-in Hot Tub
🔑	Sought After Village Location
🔑	Situated in Buckinghamshire Grammar Schools Catchment Area

## Description

Discover this impressive six-bedroom detached house on Ashley Green which has a plot exceeding 0.5 acres.

This beautiful family home features four versatile reception rooms currently used as a gym, office, snug and the main living room which is open to the calming garden room that enjoys great views. There is a modern and well-equipped kitchen/diner, and a separate utility room. Additionally, it includes a one-bedroom annex with an en-suite bedroom and an open-plan living room and its own kitchen.

The first floor of the house accommodates four double sized bedrooms two of which have ensuite bathrooms. The second floor offers a spacious landing, a bathroom with a bath and separate shower, and a double bedroom.

The expansive rear garden is adorned with an impressive patio area and a built-in hot tub, complemented by a natural pond, and sweeping views across fields.

This home embodies refined living with ample space and scenic surroundings, ideal for families seeking both comfort and eco-conscious living. The property boasts a range of eco-friendly features, including a ground source heat pump, an electric car charging point and solar photovoltaic (PV) panels, enhancing energy efficiency and sustainability.





## Location

Ashley Green is a sought-after village that still retains a strong sense of community with regular activities at the Village Hall, the Old School, Church, and pub at the centre. The property is situated within the sought-after Buckinghamshire grammar school catchment area, offering excellent educational opportunities.



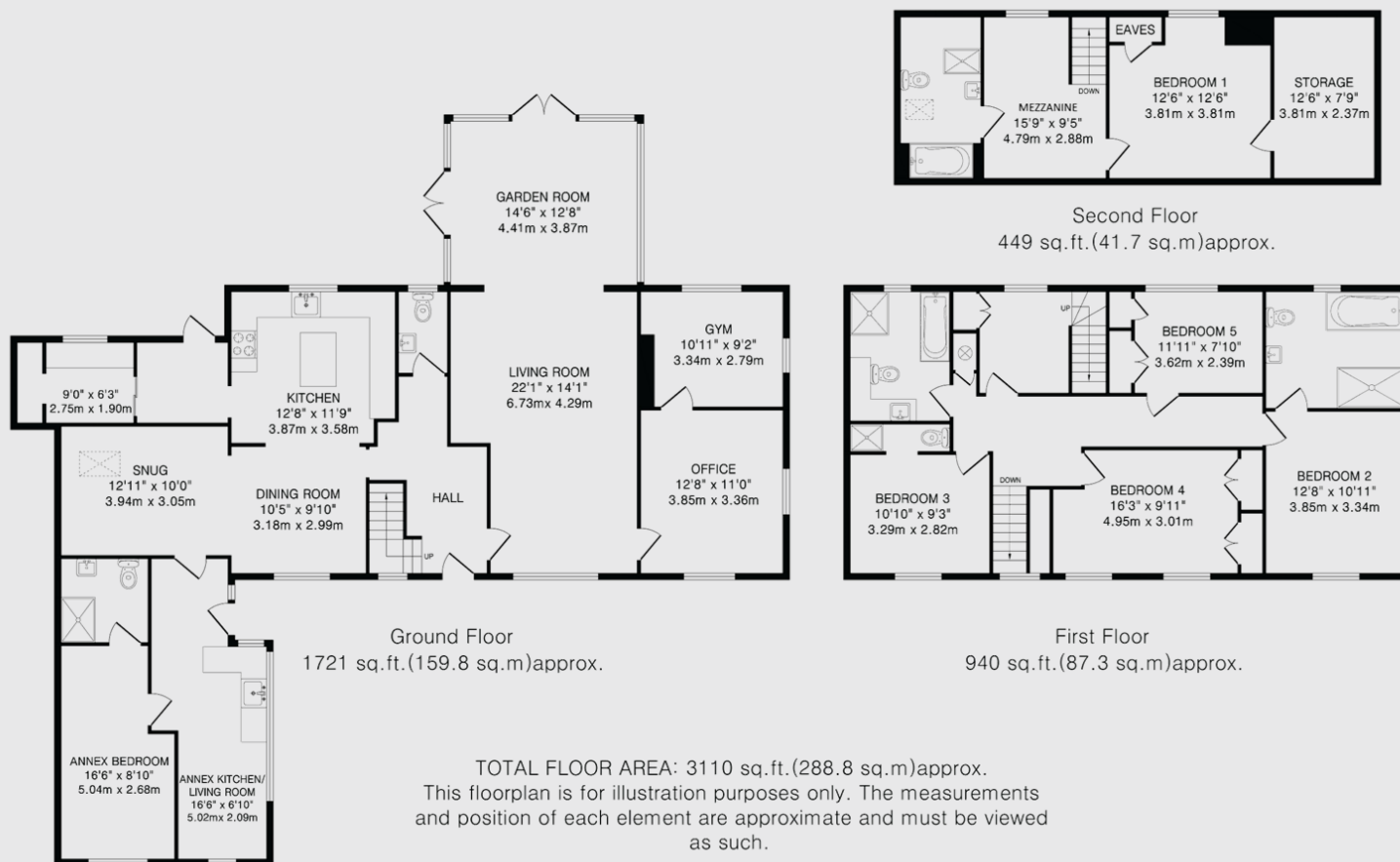












#### IMPORTANT INFORMATION:

These particulars do not constitute an offer or contract in whole or part. The statements contained herein are made without responsibility on the part of Ashtons or the vendors and they cannot be relied upon as representatives of fact. In respect of floor plans, these are for illustrative purposes only. The measurement and position of each element is approximate and must be viewed as such. Intending purchasers should therefore satisfy themselves by inspection or otherwise as to their correctness. The vendors do not make or give, and neither Ashtons nor any person in their employment has any authority to make or give, any representation or warranty whatsoever in relation to this property.

We offer a wide range of services through third party providers including solicitors, surveyors, removal firms, mortgage providers and EPC suppliers. We receive additional payments for administering suppliers quoting software and making referrals. You are not under any obligations to use these services and it is your discretion whether you choose to deal with these parties or your own preferred supplier. You should be aware the average payment we received in 2021 equated to £48.36 per referral.

Contact one of our property experts today:

📞 01442 862 533 ✉ [thecollection@ashtons.co.uk](mailto:thecollection@ashtons.co.uk) 💻 [ashtons.co.uk/the-collection](https://ashtons.co.uk/the-collection)

Berkhamsted | Harpenden | Hitchin | Redbourn | St Albans | Welwyn Garden City

The  
**Collection**  
TOWN | COUNTRY | EQUESTRIAN