

Green Gate Barns, Earlswood, Solihull

£1,500,000

🛏 5 🚿 3 🛋 1



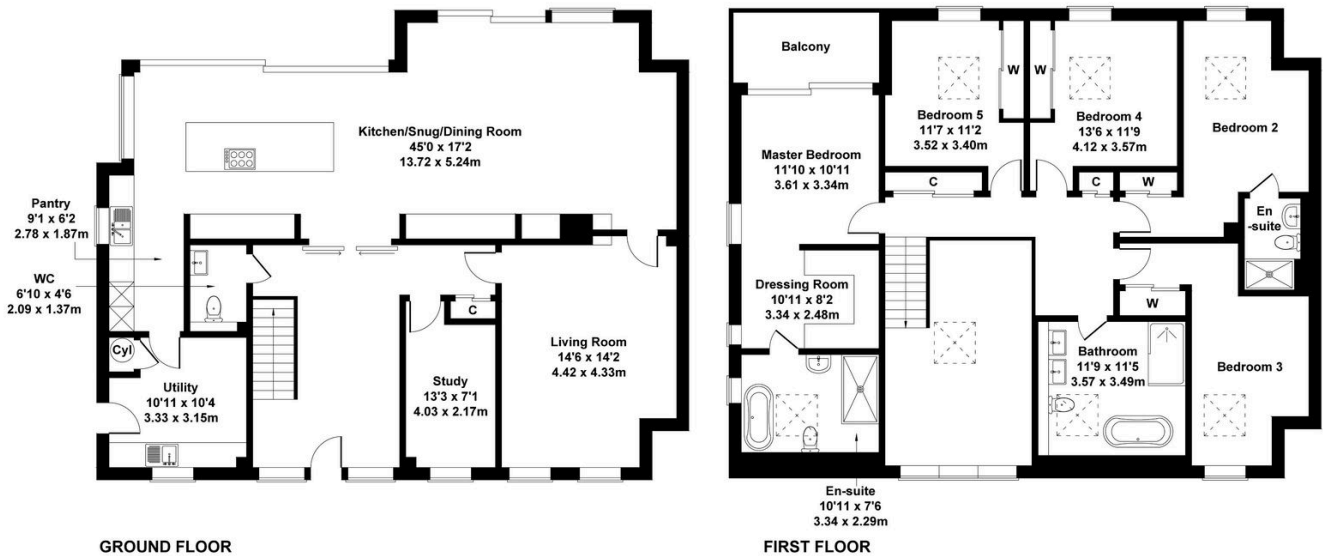
This impressive five-bedroom detached home features a luxurious main suite with a private balcony, walk in wardrobe, and ensuite, along with a spacious open plan kitchen, dining area, and elegant lounge centred around a double sided log fire, ideal for entertaining or relaxing in style. Immerse yourself in serene landscaped surroundings. The additional land is available to purchase Circa 3 Acres - Price on application. Give us a call if you would like to discuss further. 0121 744 4144 + Option 4

Key Features

- Contemporary and thoughtfully designed
- Large Family Home with Five Bedrooms
- Balcony off the master bedroom overlooking the views
- Gated and secure Private Development
- Solar Panels and Air Source Heat Pump
- Quality finish and specification throughout
- Spectacular views to the rear of rolling countryside
- Underfloor Heating and Double Glazing Throughout
- Additional Land available to purchase circa 3 acres (price on application)
- Large Garden with extensive patio area

Green Gate Barns

Approximate Gross Internal Area
2960 sq ft - 275 sq m



Not to Scale. Produced by The Plan Portal 2024
For Illustrative Purposes Only.