




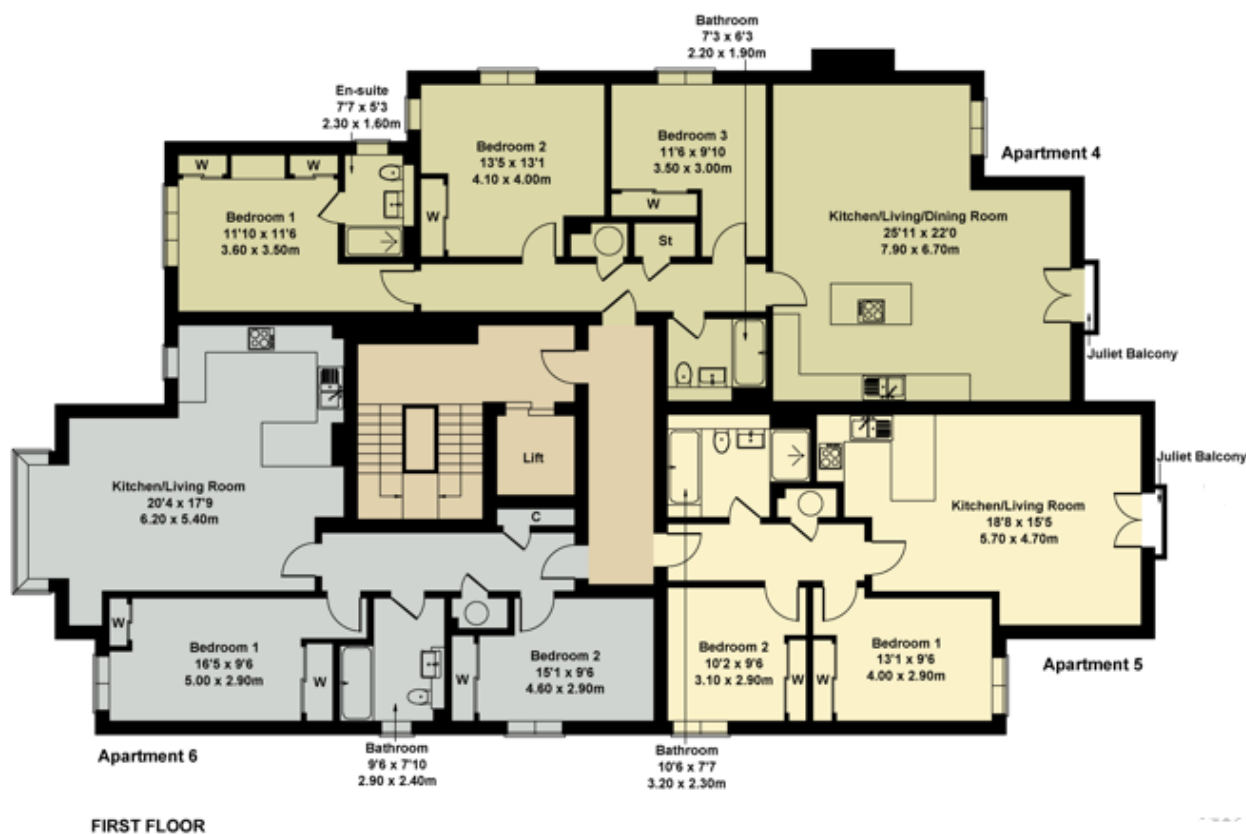
Apartment 5 Tanworth Lane, Shirley

From £320,000

 2  1  1



- SHOW HOME Available to view
- 10 Year Warranty
- Luxury specification
- Gated Development
- High Energy Rated A
- Allocated parking
- Ready to occupy
- Ideal for downsizers
- Secure entry system and gated development
- Close to Shops



Not to Scale. Produced by The Plan Portal 2024
For Illustrative Purposes Only

New Build luxury first floor apartment situated in the heart of Shirley. One of only eight desirable properties in this exclusive gated development, Plot 5 offers spacious accommodation situated within an extremely attractive building. The property offers two bedrooms with fitted wardrobes in the master, bathroom with bath and shower over with Porcelanosa tiling. The open plan living and kitchen area benefits from double doors to the rear with a Juliet balcony window providing a light and airy feel. *There is the option to buy a share of the Freehold