

# Brighton Road

## Worthing



# Brighton Road Worthing

£140,000



2

BEDROOM

1

RECEPTION

1

BATHROOM

## About the property

**\*\* Pre Auction Offers Welcome \*\***

Located on Brighton Road in Worthing, is this charming two-bedroom apartment situated just a stone's throw away from the picturesque Worthing seafront and local amenities, this chain-free property offers a blend of comfort and convenience.

Hampton Court, where this apartment is located, offers peace of mind with its security phone entry system and a convenient passenger lift for easy access to the third floor. Whether you're looking for a permanent residence or a holiday retreat, this apartment ticks all the boxes for a comfortable and stylish living experience by the sea.

As you step into the apartment, you are greeted by a spacious open plan lounge, kitchen, and dining area. The dual aspect windows flood the room with natural light, creating a warm and inviting atmosphere. The kitchen is a modern delight, boasting sleek wall and base units, ample worktop space including a breakfast bar, integrated oven/hob, and room for additional appliances.

Venturing further into the apartment, you'll find the well-proportioned main bedroom featuring built-in wardrobes for all your storage needs. The second bedroom is also a good size and offers versatility for various needs. The tiled bathroom is a sanctuary in itself, complete with a bath and an electric shower, wash basin, WC, and a heated towel rail for added comfort.

Situated within a hundred metres of Worthing seafront with local shopping facilities on Brighton Road and the town centre with a wider range of amenities only a short distance away. Hampton Court is highly convenient for the Splashpoint Leisure Complex/swimming pool, bars, cafes and the beach. The property is served by Worthing mainline railway station and bus routes pass along Brighton Road offering services to Brighton, Portsmouth and beyond.











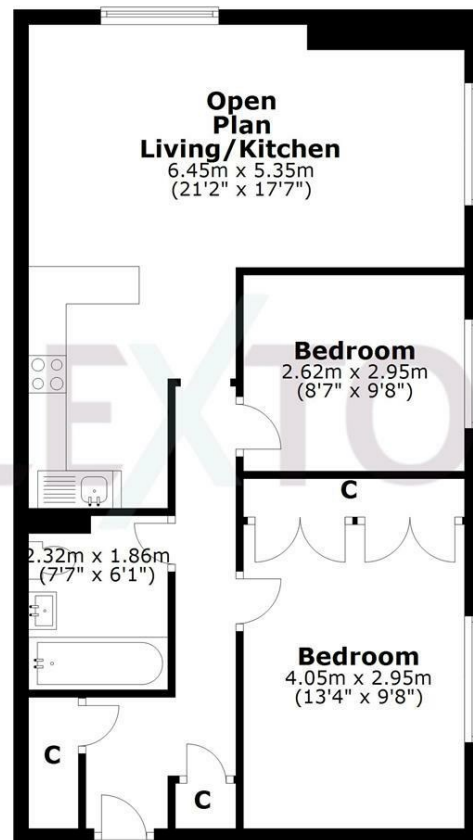




SCAN HERE TO VIEW ALL AUCTION PROPERTIES

### Third Floor

Approx. 62.3 sq. metres (670.1 sq. feet)



Total area: approx. 62.3 sq. metres (670.1 sq. feet)

Whilst every care has been taken to ensure accuracy, dimensions are approximate and for illustrative purposes only.

Created by Lextons. All rights reserved.

