

Richmond

Bognor Regis

LEXTONS / SALES
LETTINGS
AUCTIONS
COMMERCIAL



About the property

Auction Date 25th Of September 2024

Nestled in the charming Aldwick area of Bognor Regis, on the prestigious Richmond Avenue, lies a remarkable opportunity to own a piece of history. This impressive property, once five Victorian terraced houses, has been transformed into a collection of 20 exquisite flats, each exuding elegance and style.

Recently refurbished to the highest standard, this period block is a true gem, boasting not only a prime location but also a sense of grandeur. The buildings stand tall on a tree-lined street, offering a picturesque setting that is sure to captivate all who pass by.

Convenience is key with this property, as it is within walking distance of local amenities such as shops, cafes, and restaurants, making everyday living a breeze. And for those who crave the calming presence of the sea, the inviting seafront is just a leisurely stroll of a quarter of a mile away.

Adding to the allure of this property are the two expansive car parking areas at the rear, providing ample space for residents and guests alike. Whether you are looking for a sound investment opportunity or a place to call home, this property offers endless possibilities in a sought-after location.

Seize this opportunity to own a lucrative opportunity in the heart of Aldwick. Please contact us for more specific details.

Richmond Avenue Bognor Regis

£30,000



null

BEDROOM

null

RECEPTION

null

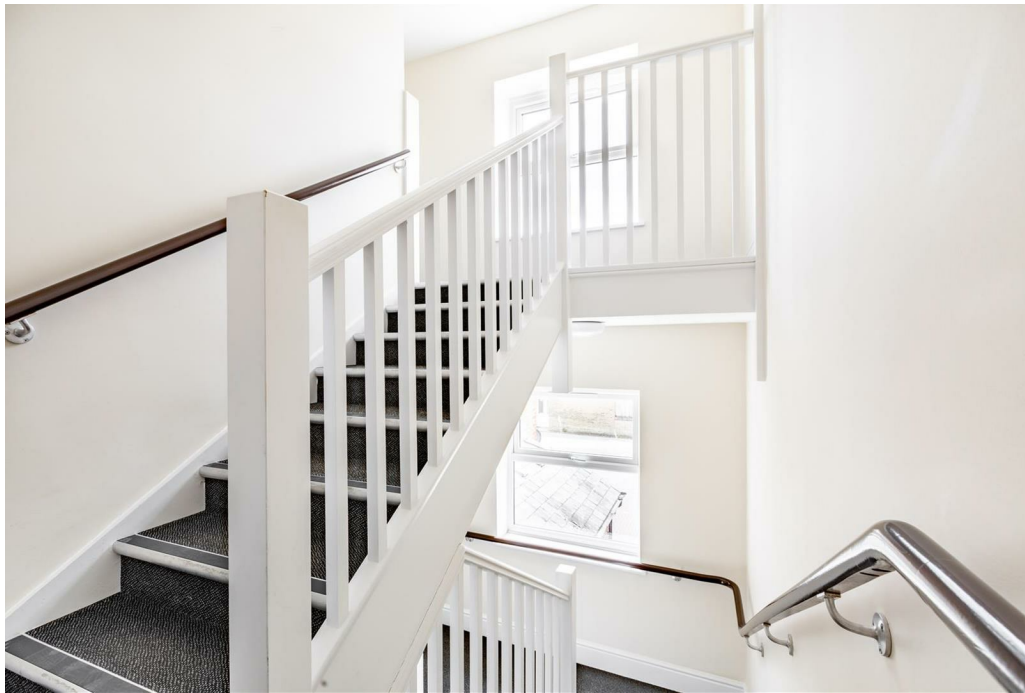
BATHROOM



Abbey
Fields

cubit
& west
FOR SALE

Flats 9-20





SCAN HERE TO VIEW ALL AUCTION PROPERTIES



Whilst every care has been taken to ensure accuracy, dimensions are approximate and for illustrative purposes only.

Created by Lextons. All rights reserved.

Energy Efficiency Rating		Current	Potential
Very energy efficient - lower running costs			
(92 plus) A			
(81-91) B			
(69-80) C			
(55-68) D			
(39-54) E			
(21-38) F			
(1-20) G			
Not energy efficient - higher running costs			
England & Wales		EU Directive 2002/91/EC	