

Whippingham

Brighton

LEXTONS /
SALES
LETTINGS
AUCTIONS
COMMERCIAL



About the property

FOR SALE BY AUCTION on 30th April 2025

Freehold Terraced House Arranged As Two Self Contained Flats Each Having Their Own Private Street Entrance.

This property is the ideal buy to let investment or development opportunity. Arranged as one bedroom ground floor flat with garden and 2 bedroom first floor flat both in need of modernisation. If preferred and subject to any necessary consents, reconfiguration back into one family house is also ideal.

Offered with full and immediate vacant possession, the property offers the perfect blank canvas for the new owner to put their own stamp on.

Situated in this very popular location just off Lewes Road close to many local amenities whilst bus services provide to the city centre of Brighton.

Whippingham Street Brighton

£400,000

3

BEDROOM

2

RECEPTION

2

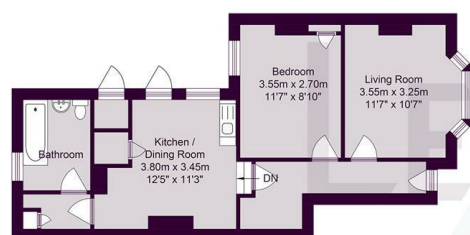
BATHROOM



SCAN HERE TO VIEW ALL AUCTION PROPERTIES



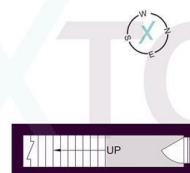
Ground Floor



Approximate gross Internal floor Area 46.56 sq m/ 501.16 sq ft

Whilst every care has been taken to ensure accuracy, dimensions are approximate and for illustrative purposes only.

Ground Floor



Approximate gross Internal floor Area 59.66 sq m/ 642.17 sq ft

Whilst every care has been taken to ensure accuracy, dimensions are approximate and for illustrative purposes only.

First Floor



Energy Efficiency Rating		
	Current	Potential
Very energy efficient - lower running costs		
(92 plus) A		77
(81-91) B		
(69-80) C		
(55-68) D		34
(39-54) E		
(21-38) F		
(1-20) G		
Not energy efficient - higher running costs		
England & Wales	EU Directive 2002/91/EC	