

Buckingham

Brighton

LEXTONS / SALES
LETTINGS
AUCTIONS
COMMERCIAL



About the property

FOR SALE BY AUCTION on 26th June 2024 ** PRE-AUCTION OFFERS WELCOME
**

A good size one-bedroom flat in the heart of Central Brighton, situated on the prestigious Buckingham Place.

The open plan kitchen is a focal point of contemporary design, seamlessly integrated into the living area. Sleek and functional, it offers a perfect space for culinary enthusiasts and social gatherings. The lounge, adorned with elegant Parquet flooring, provides a spacious retreat bathed in natural light streaming through the large windows. This creates a warm and welcoming ambiance, making it an ideal spot for relaxation or entertaining guests.

The double-sized bedroom is a sanctuary of comfort, offering ample space for rest and rejuvenation. The neutral tones and well-thought-out layout create a tranquil atmosphere, ensuring a peaceful night's sleep. Adjacent to the bedroom, you'll find a well-appointed family bathroom, featuring modern fixtures and finishes for both convenience and style.

Situated in the vibrant heart of Brighton, Buckingham Place offers not only a stylish living space but also convenient access to the city's bustling amenities. Whether you're seeking the lively atmosphere of the city center or a leisurely stroll along the nearby seaside, this flat provides a perfect balance of urban living and coastal charm.

Buckingham Place Brighton

£200,000

1

BEDROOM

1

RECEPTION

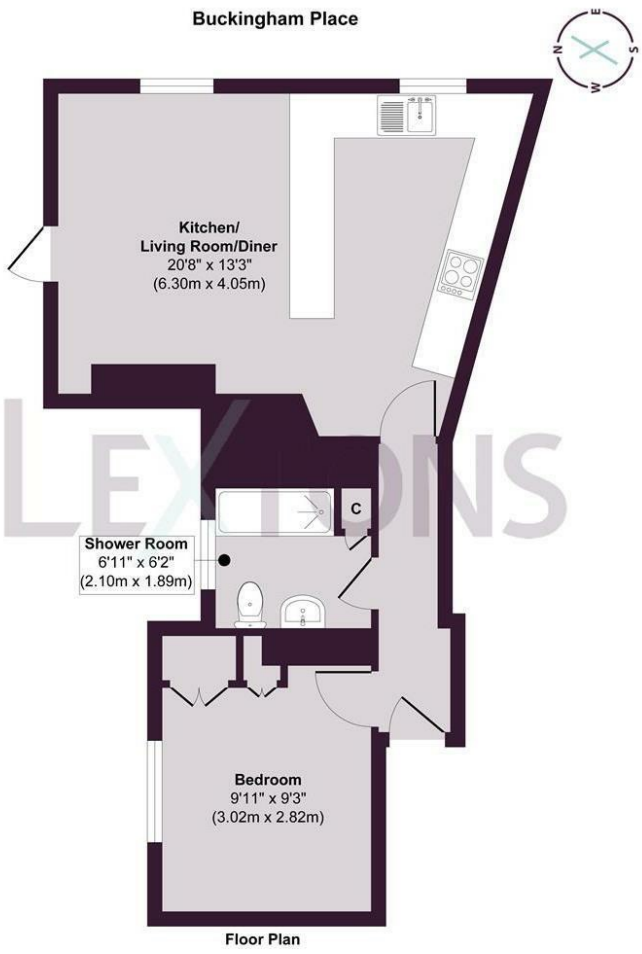
1

BATHROOM





SCAN HERE TO VIEW ALL AUCTION PROPERTIES



Approx. Gross Internal Floor Area 489 sq. ft / 45.44 sq. m

Energy Efficiency Rating		
	Current	Potential
Very energy efficient - lower running costs		
(92 plus) A		
(81-91) B		
(69-80) C		
(55-68) D	61	72
(39-54) E		
(21-38) F		
(1-20) G		
Not energy efficient - higher running costs		
England & Wales	EU Directive 2002/91/EC	



Call our sales team to arrange a viewing appointment:

01273 56 77 66

174 Church Road, Hove, BN3 2DJ
hovesales@lextons.co.uk | www.lextons.co.uk