



40 Otterhill Court

, Middlesbrough, TS8 9PY

£55,000

Check Out This 2 Bedroom Flat in Hemlington!

Description:

Discover this spacious and inviting 2 bedroom flat in the charming area of Hemlington. Whether you're a first-time buyer looking for your perfect home or a savvy property investor seeking a lucrative opportunity, this flat is a fantastic choice.

Investment Opportunity:

Previously rented out at £550 per month, this flat offers a great return on investment.

Location:

Conveniently located near Hemlington Lake and Hemlington Shops, this flat provides easy access to local amenities. Excellent transport links are just a stone's throw away, with nearby bus routes and main motorways ensuring you're always connected.

Viewing

Please contact our Progression Property Office on 01642 063352 if you wish to arrange a viewing appointment for this property or require further information.



Floor Plan

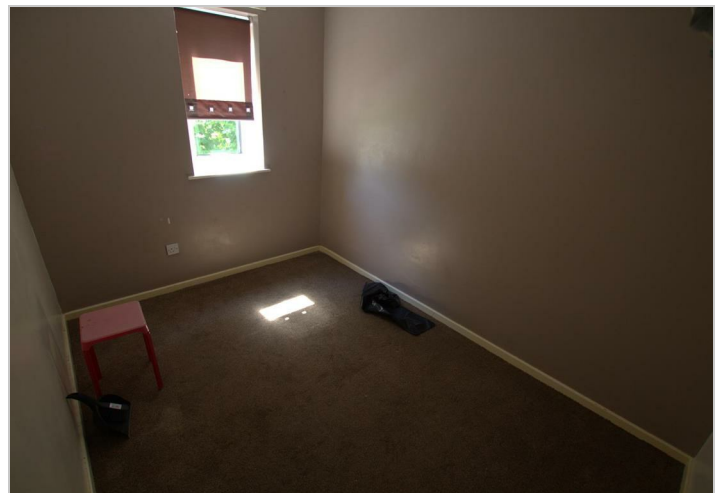


Area Map



Energy Efficiency Graph

| Energy Efficiency Rating | | Environmental Impact (CO ₂) Rating | | | |
|---|---------|--|---|-------------------------|-----------|
| | Current | Potential | | Current | Potential |
| Very energy efficient - lower running costs | | | Very environmentally friendly - lower CO ₂ emissions | | |
| (92 plus) A | | | (92 plus) A | | |
| (81-91) B | | | (81-91) B | | |
| (69-80) C | | | (69-80) C | | |
| (55-68) D | | | (55-68) D | | |
| (39-54) E | | | (39-54) E | | |
| (21-38) F | | | (21-38) F | | |
| (1-20) G | | | (1-20) G | | |
| Not energy efficient - higher running costs | | | Not environmentally friendly - higher CO ₂ emissions | | |
| England & Wales | | EU Directive 2002/91/EC | | England & Wales | |
| | | | | EU Directive 2002/91/EC | |



These particulars, whilst believed to be accurate are set out as a general outline only for guidance and do not constitute any part of an offer or contract. Intending purchasers should not rely on them as statements of representation of fact, but must satisfy themselves by inspection or otherwise as to their accuracy. No person in this firm's employment has the authority to make or give any representation or warranty in respect of the property.

329 Linthorpe Road, Middlesbrough, TS5 6AA

Tel: 01642 063352 Email: info@progression-lettings.co.uk <https://www.progression-property.co.uk>