



36 Marske Lane

, Stockton-On-Tees, TS19 8XD

£169,999

This extended semi-detached home in a popular location, has great internal space and is perfect for growing families.

Sold with the benefit of NO CHAIN, The property features a garage, driveway, ground floor shower room, gas central heating with combi boiler, UPVC double glazing and established gardens.

In brief the property comprises entrance hall, generous sitting room/diner to the front, extended lounge to the rear, shower room and kitchen on the ground floor.

The first floor has two large double bedrooms, a single bedroom and a well appointed bathroom.

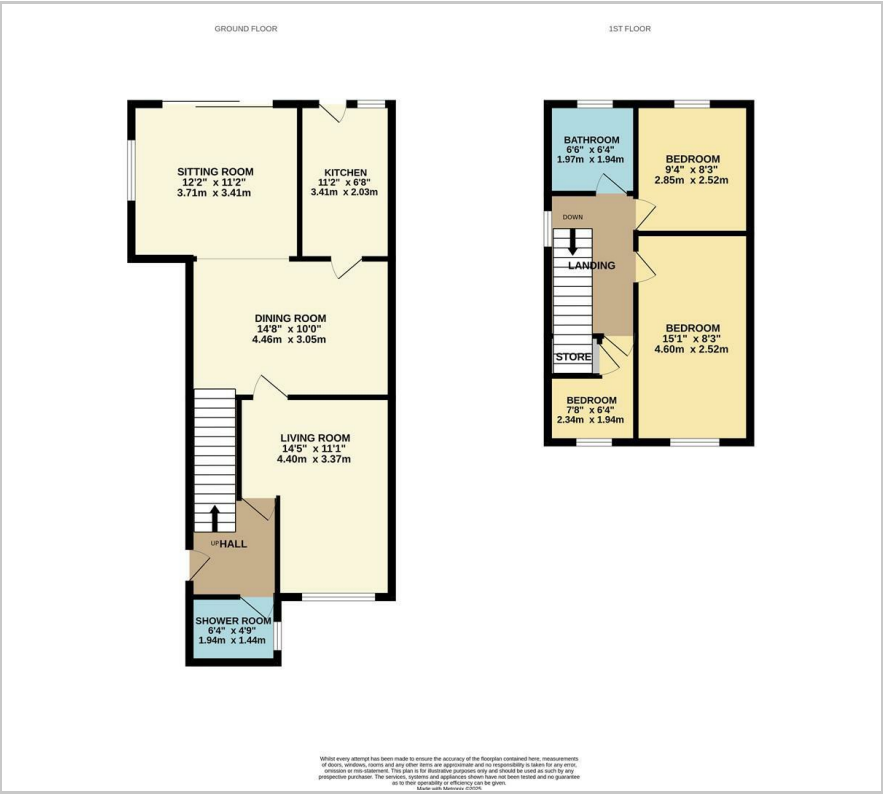
- FANTASTIC LOCATION
- GARAGE & DRIVE
- GROUND FLOOR SHOWER ROOM
- THREE BEDROOMS
- PRIVATE REAR GARDEN
- CHAIN FREE SALE

Viewing

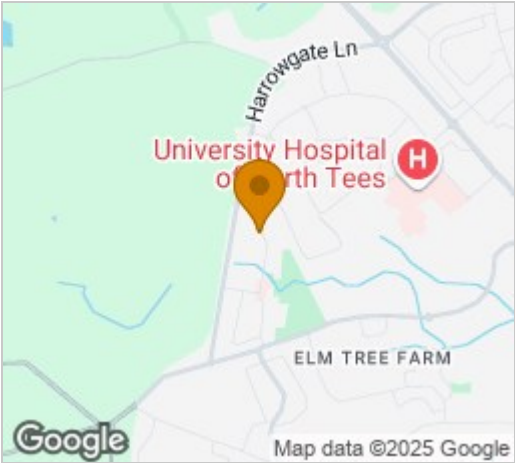
Please contact our Progression Property Office on 01642 063352 if you wish to arrange a viewing appointment for this property or require further information.



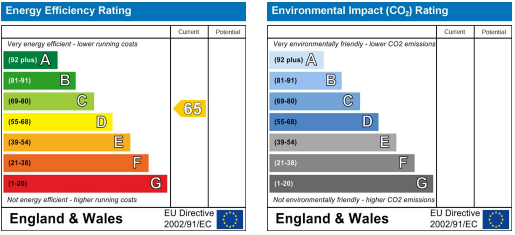
Floor Plan



Area Map



Energy Efficiency Graph



These particulars, whilst believed to be accurate are set out as a general outline only for guidance and do not constitute any part of an offer or contract. Intending purchasers should not rely on them as statements of representation of fact, but must satisfy themselves by inspection or otherwise as to their accuracy. No person in this firm's employment has the authority to make or give any representation or warranty in respect of the property.