



## 7 Bridge House Court Stone Row

, Skinningrove, TS13 4BF

**Offers in the region of £120,000**

A SPACIOUS AND VERY WELL APPOINTED FIRST FLOOR MODERN BUILD TWO BEDROOM APARTMENT SET WITHIN THIS RECENTLY BUILT DEVELOPMENT SET JUST OFF THE TRADITIONAL CENTRAL SQUARE OF SKINNINGROVE. THE PROPERTY COMES WITH ALLOCATED PARKING, AND IS WITHIN A MATTER OF MINUTES FROM THE BEACH AND NUMEROUS COUNTRYSIDE WALKS. THIS PROPERTY IS IDEAL FOR THE PURPOSES OF A SECOND HOME / HOLIDAY LET / INVESTMENT OR AS AN IMPRESSIVE AND SECURE HOME FOR ANY INCOMING PURCHASER TO LIVE

Beautifully presented throughout, the property has accommodation which in brief comprises an entrance hall, a spacious open plan Living Room / Kitchen area, two well sized Bedrooms and a Family Bathroom. The property is decorated to a good standard throughout.

- PREVIOUS RENTAL INCOME OF £1000 PCM AND AS SUCH WILL BE ADVERTISED FOR LET IMMINENTLY AT THAT PRICE
- CAN BE LET ALSO ON A NIGHTLY RATE FOR THE PURPOSES OF AIR BNB AND BOOKING.COM FOR GREATER RETURNS LATCHING ON TO THE HOLIDAY LET MARKET AS HAS BEEN DONE PREVIOUSLY
- CURRENTLY FURNISHED AND CAN BE SOLD AS SUCH DEPENDING ON THE LEVEL OF OFFER MADE

### Viewing

Please contact our Progression Property Office on 01642 063352 if you wish to arrange a viewing appointment for this property or require further information.



2



1

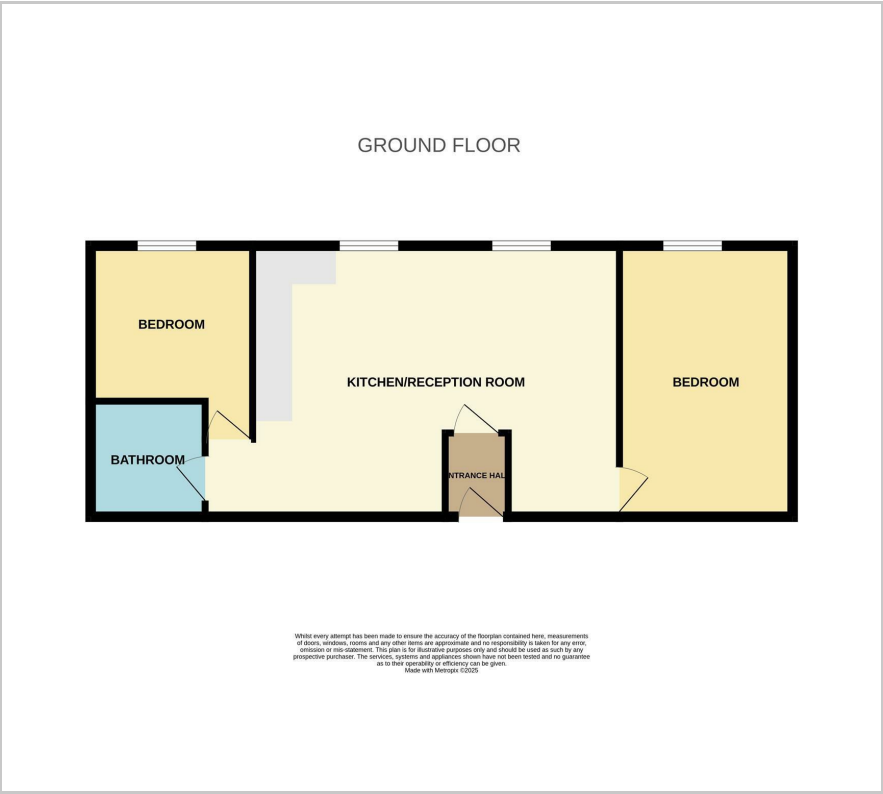


1





Floor Plan



Area Map



Energy Efficiency Graph



These particulars, whilst believed to be accurate are set out as a general outline only for guidance and do not constitute any part of an offer or contract. Intending purchasers should not rely on them as statements of representation of fact, but must satisfy themselves by inspection or otherwise as to their accuracy. No person in this firms employment has the authority to make or give any representation or warranty in respect of the property.