



## 3 Bridge House Court Stone Row

, Skinningrove, TS13 4BF

**Offers in excess of £240,000**

**\*\* A UNIQUE AND SPACIOUS MODERN TOWN HOUSE IDEAL FOR A FAMILY WHO REQUIRE A SPACIOUS HOME IN WHICH TO RESIDE OR AS AN INVESTMENT FOR THE PURPOSES OF AN AIR BNB OR SIMILAR. CURRENTLY BEING SOLD WITH VACANT POSSESSION AND NO ONWARD CHAIN, HOWEVER COULD BE LET SUBJECT TO REQUIREMENTS \*\***

Situated in the Heart of Skinningrove, this modern build three storey townhouse with a total of four bedrooms and two bathrooms, offers a double sized integral garage, parking and a rear garden whilst being located within a stones throw from the hidden gem of Skinningrove Beach.

Positioned within a stylish development the property boasts modern luxury whilst being located perfectly for access to Saltburn., Whitby and beyond.

Having been recently constructed in 2018, this property has been finished to a high standard as well as being thermally efficient. The accommodation in brief consists of - ground floor; double garage with utility room, the first floor offers; kitchen dining, family bathroom and lounge overlooking the central square of Skinningrove, the 2nd floor boasts; 4 bedrooms and another family bathroom.

### Viewing

Please contact our Progression Property Office on 01642 063352 if you wish to arrange a viewing appointment for this property or require further information.



4



2

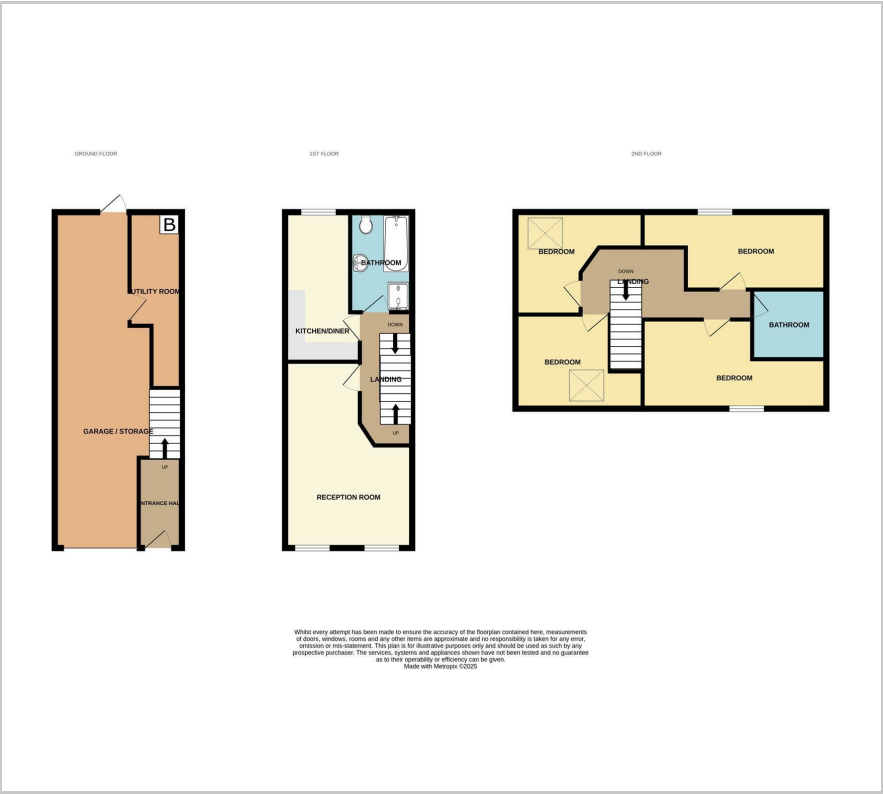


2

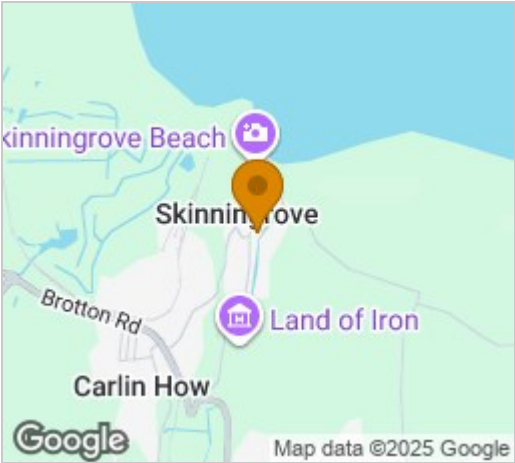




Floor Plan



Area Map



Energy Efficiency Graph



These particulars, whilst believed to be accurate are set out as a general outline only for guidance and do not constitute any part of an offer or contract. Intending purchasers should not rely on them as statements of representation of fact, but must satisfy themselves by inspection or otherwise as to their accuracy. No person in this firms employment has the authority to make or give any representation or warranty in respect of the property.